



Delivery Report on funds received
by **ReForest Now**
from **Ecosia** (Wildfire Relief fundraiser)

Rainforest Trees Planted: **7, 500**



Prepared by Maximo Bottaro & Kallen Marecic on behalf of ReForest Now

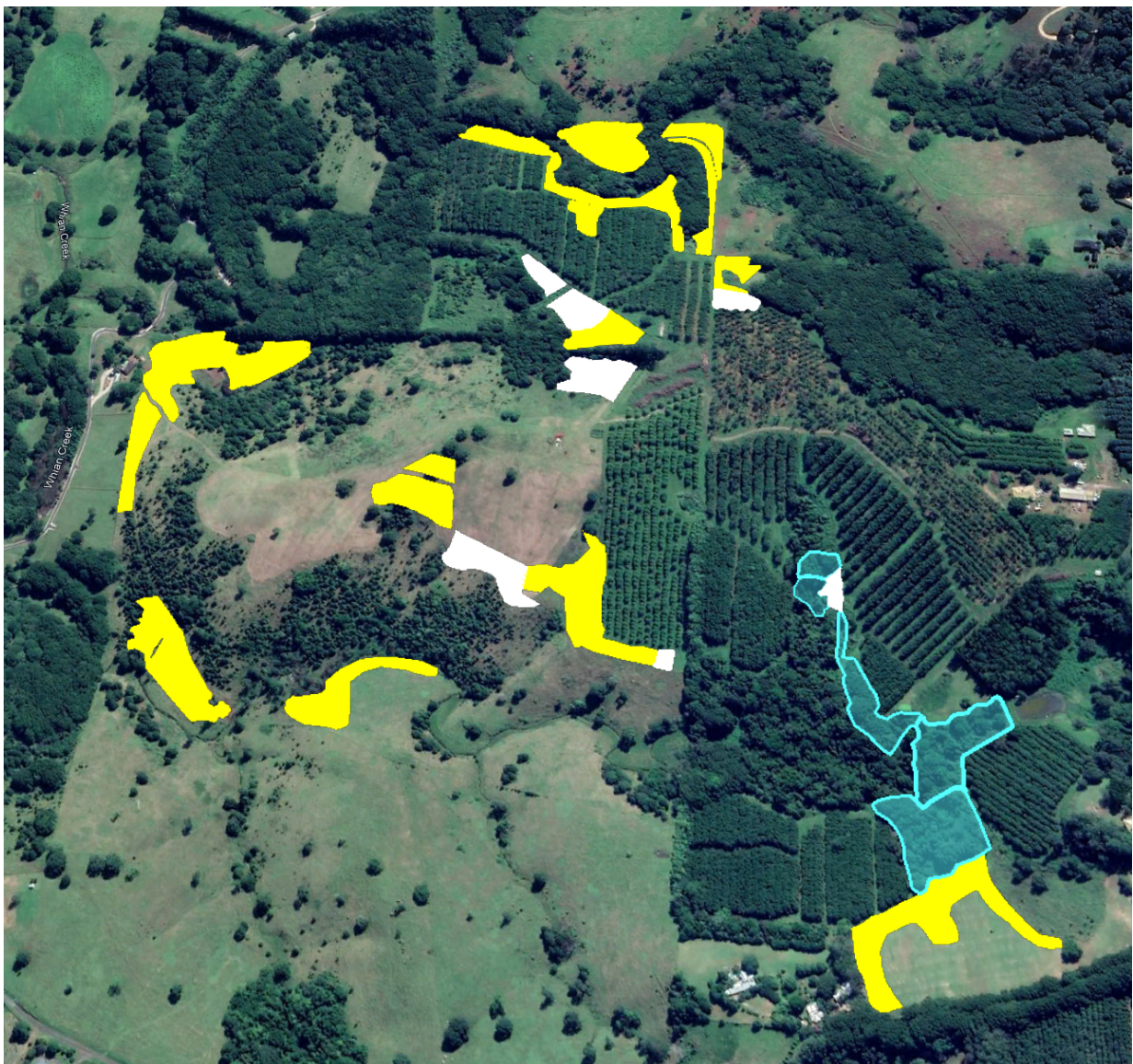
Background

On the 27th of July 2021, Ecosia ran a worldwide fundraiser to support reforestation efforts in California, Brazil and with ReForest Now in Australia. From this we have been able to plant a further 7,500 rainforest trees on behalf of Ecosia. We have waited until the dry season ended to ensure the best result and have now completed the objective, just days ahead of a solid rainy period. These trees will now have a great chance of successfully establishing in the red soil of the Big Scrub.

Location 1. 149 Federal Drive, Eureka

We have returned to one of our 3 mega planting sites with Ecosia to plant out further areas around the Allansby remnant. Pictured below. The yellow areas have been planted as part of past projects (including Ecosia!), the white areas were planted for you in this round of 7,500 trees. The teal areas show rainforest regeneration projects. These were recently reported on to several donors, you can find them on our website here:

<https://www.reforestnow.org.au/reports2021>



Location 2. 1250 Coolamon Scenic Drive, Montecollum

We also began planting at a new location at 1250 Coolamon Scenic Drive (overlooking Byron Bay). At this site several dead trees can be seen along the top of the image. These were invasive *Camphor laurel* trees that have been injected and culled. Although difficult to see from above, the landholder (house pictured top right) has done extensive work in converting the area back to rainforest using a team of professional bush regenerators. We have assisted this by planting out the bare paddock at the bottom of the hill (white areas demarcated).


The existing rainforest regeneration team here will continue to care for your trees as they reach maturity and tap into the water table generated by the dam to which your planting adjoins.




Planting details

Date	Address	Number of trees
October 4	149 Federal Drive, Eureka NSW 2480	3,012
October 6	149 Federal Drive, Eureka NSW 2480	3,601
October 8	1250 Coolamon Scenic Drive, Montecollum NSW 2482	887
TOTAL		7,500


See those bright green trees in the background? Those are the invasive Camphor Laurel from China. These trees are replacing significant areas of the north coast of NSW where we live. ReForest Now confronts the issue by planting in the bare areas around these Camphors, then when our trees have grown up, we drill and leave the Camphors to die in place. This way they can still act as a perch for birds to spread native seeds into the landscape and for rainforest trees to grow up in between.



Species are pre-mixed by our 'Speciesman' (green shirt overseeing the planting here). This person ensures that plant species are mixed and the right species go in the right places.



Site preparation followed our regular guidelines, deeply drilled holes, 600ml of water crystal and additional osmocote fertilizer to ensure survival and growth.



Three of our seven Augermen, providing around 3 or 4 thousand holes every planting morning by 10.30 or 11.30 am. By creating a specific auger section we speed up plantings and reduce the risk of injury on these machines.

Next steps

We couldn't have hoped to have met a better partner for our mutual futures than Ecosia.

What we see on the horizon

- A) We're looking forward to working with you again for more large-scale plantings and perhaps some rainforest regeneration too!
- B) RN's goal is to reach 250, 000 rainforest trees planted by the end of 2021. We would welcome additional Ecosia trees this year, as we have the capacity to restore hectares more critically endangered rainforest – hopefully capitalizing on yet another La Nina event (a climate influence bringing above-average rainfall to eastern Australia).
- C) RN very much needs to build a second and far bigger nursery. We're currently looking into opportunities to make this happen, which will increase our production output by more than 10-fold. We hope to update Ecosia with good news soon.

If you'd like to discuss anything further, please contact the CEO at info@reforestnow.org.au or +61415 134 941 (*direct Australian number*).

Yours Sincerely,

Signed: Maximo Bottaro - CEO & Cofounder



APPENDIX I: Species list

44 species of rainforest trees were planted in this round of funding. Note, these are planted alongside over 40 000 other rainforest trees on this site from various cohorts, the total species diversity planted at the site could be estimated between 60-75 species.

<i>Acacia melanoxylon</i>	Australian blackwood	<i>Flindersia australis</i>	Australian teak
<i>Acmena hemilampra</i> (hemilampra)	Broad-leaved lilly pilly	<i>Flindersia schottiana</i>	Cudgerie
<i>Acmena smithii</i>	Common lilly pilly	<i>Flindersia xanthoxyla</i>	Yellow wood
<i>Alphitonia excelsa</i>	Red ash	<i>Glochidion ferdinandi</i>	Cheese tree
<i>Archontophoenix cunninghamiana</i>	Bangalow palm	<i>Grevillea robusta</i>	Silky oak
<i>Argyrodendron trifoliolatum</i>	White booyung	<i>Guioa semiglauc</i>	Guioa
<i>Blechnum minus</i>	Water fern	<i>Harpullia pendula</i>	Tulipwood
<i>Brachychiton acerifolius</i>	Flame tree	<i>Homo lanthus populifolius</i>	Bleeding heart
<i>Castanospermum australe</i>	Black bean	<i>Hymenosporum flavum</i>	Native frangipani
<i>Commersonia bartramia</i>	Brown kurrajong	<i>Lomandra hystrix</i>	Lomandra
<i>Cryptocarya obovata</i>	Pepperberry	<i>Lophostemon confertus</i>	Brush box
<i>Diploglottis australis</i>	Native tamarind	<i>Macaranga tanarius</i>	Macaranga
<i>Dysoxylum mollissimum</i> (mollissimum)	Red bean	<i>Mallotus philippensis</i>	Red kamala
<i>Elaeocarpus grandis</i>	Blue quandong	<i>Mischocarpus piriformis</i>	Yellow pear fruit
<i>Elaeocarpus obovatus</i>	Hard quandong	<i>Neolitsia dealbata</i>	White bolly gum
<i>Endiandra pubens</i>	Hairy walnut	<i>Pittosporum undulatum</i>	Sweet pittosporum
<i>Eupomatia laurina</i>	Bolwarra	<i>Syzygium ingens</i>	Red apple
<i>Ficus coronata</i>	Creek sandpaper fig	<i>Syzygium oleosum</i>	Blue lilly pilly
<i>Ficus fraserii</i>	Forest sandpaper fig	<i>Toona ciliata</i>	Red cedar
<i>Ficus obliqua</i>	Small-leaved fig	<i>Trema tomentosa</i> var. <i>viridis</i>	Poison peach
<i>Ficus watkinsiana</i>	Strangler fig	<i>Tristaniopsis laurina</i>	Water gum
<i>Waterhousea floribunda</i>	Weeping lilly pilly	<i>Wilkiea austroqueenslandica</i>	Smooth wilkiea