



ReForest Now

Growing Rainforest Together

PLANTING REPORT

- 2024 -

-40, 000 trees planted in Indonesia for
\$88, 000 -



Written by
Leonie Zauzig
Maximo Bottaro



SUMATRA, INDONESIA



Launch Project

Thank you SAP, for enabling us to launch RN's first international project in North Sumatra, Indonesia. You committed to a total of 140, 000 trees, which were planted in nine months. Your generous donation enabled us to get the groundwork done for future plantings in Indonesia, including establishing a forest patrol to protect both our work and the existing forest for the future and the purchase of equipment.

Collaboration with Orangutan Information Center (OIC)

Our project would not be possible without working on the ground with local organisations sourced by our partner in Indonesia, the OIC. They have worked on restoring the area since 2008, and their connection to local groups has been essential.



ReForest Now

Growing Rainforest Together



PLANTING SUMMARY INDONESIA

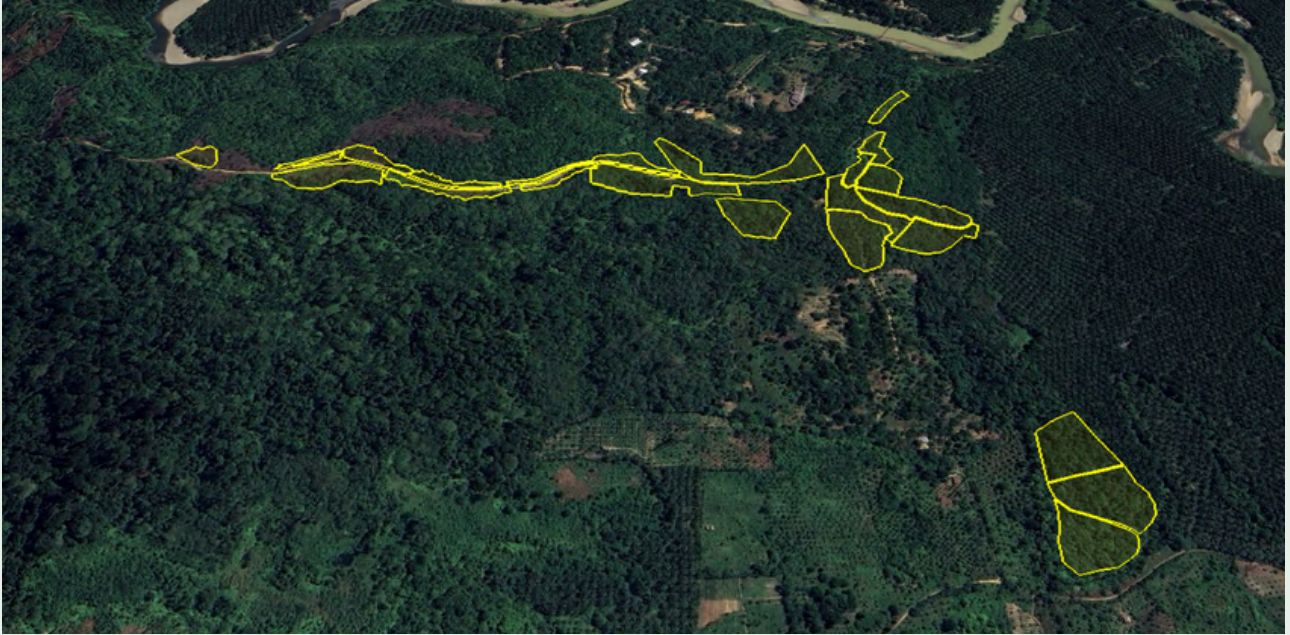


Your donation enabled us to plant a total of **140,000 trees** in North Sumatra, Indonesia. The first 100,000 trees were covered in the planting report from August 9th, 2024. Below is a detailed table overview of the remaining 40,000 trees that were planted as part of the launch project in Indonesia.

DATE	LOCATION	TREES
July 29, 2024	Bukit Mas	1,642*
July 30, 2024	Bukit Mas	3,300
July 31, 2024	Bukit Mas	1,200
August 6, 2024	Bukit Mas	3,300
August 7, 2024	Bukit Mas	3,298
August 9, 2024	Bukit Mas	3,252
August 12, 2024	Bukit Mas	3,000
August 13, 2024	Bukit Mas	4,050
August 14, 2024	Bukit Mas	4,500
August 23, 2024	Bukit Mas	4,050
August 26, 2024	Bukit Mas	8,408

MAPPING

The **40,000 trees** you donated were planted in Bukit mas, the larger of the two planting sites in Indonesia. From your previous **100,000 trees**, a total of **49,359** were planted on this site.



Here you can see the area that your previously donated **49,359** trees were planted from the first **100,000**.



The new **40,000** trees were planted in the areas as seen in this map. The trees are planted with 3x3m spacing, using a local reference method of the nearby primary forest.

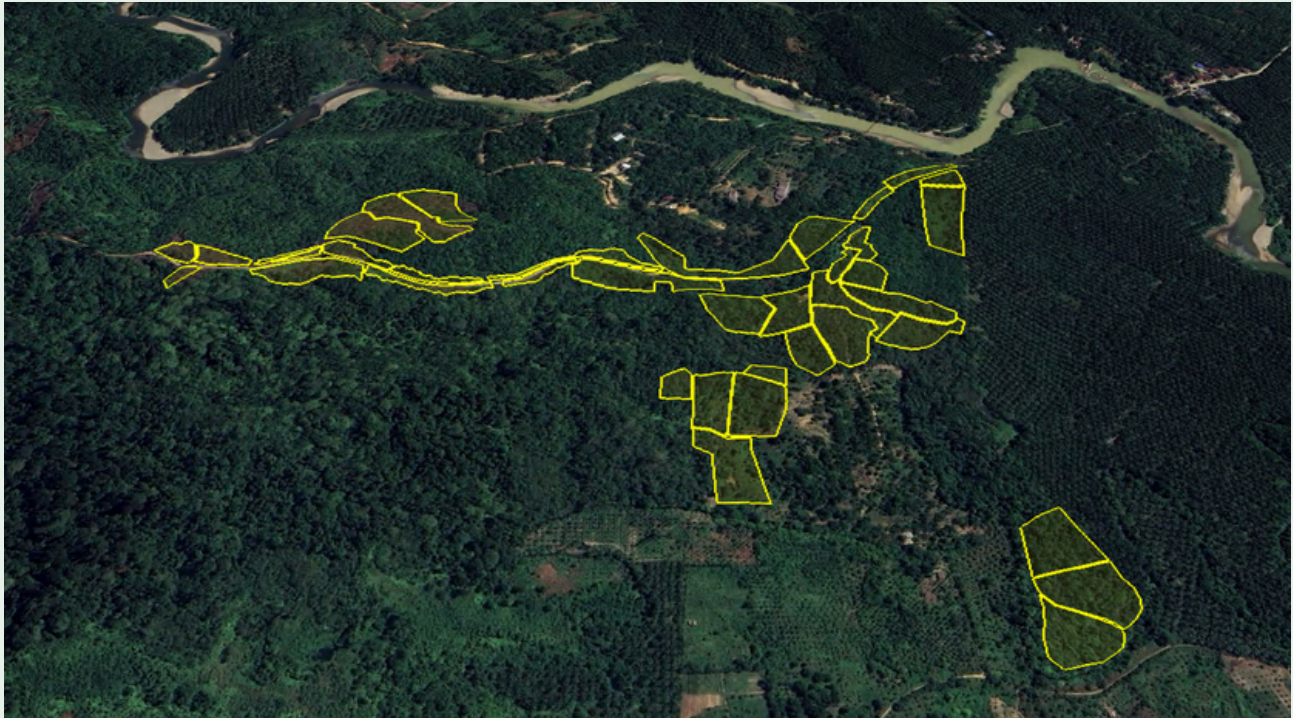
ReForest Now

Growing Rainforest Together



MAPPING

This map shows the **total area** planted in Bukit mas.



The total area planted in Bukit mas is a massive **14, 3 hectares**. The biodiversity of the forest has been enriched by **35 species**.

Plantings in this area are challenging due to steep terrain and a lack of access roads for equipment, tools and plants to be carried to the planting sites.

The area covered is equivalent to a little more than **35 soccer fields**. This is an impressive undertaking and a great example of what humans are capable of when working together.

Bukit mas has a particularly high rate of Tigers and Orangutans. Apart from these two megafauna species, Gunung Leuser National Park is home to 600 bird species, 200 mammals and 10, 000 different plant species.

This biodiversity hotspot needs to be preserved and protected from illegal logging and poaching of animals, both of which are still a problem in North Sumatra.

The forest patrol that part of your funding has contributed to is aiming to reduce illegal and harmful activity in the National Park.



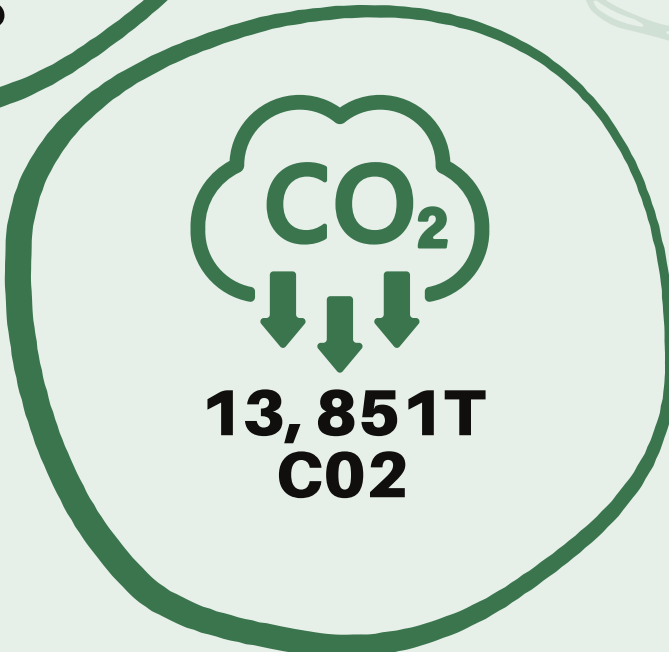
Total amount of trees planted in Bukit mas through your donation.

ReForest Now

Growing Rainforest Together



DONATION SUMMARY INDONESIA

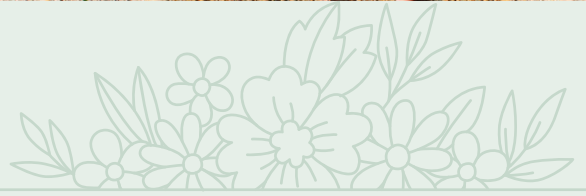




GALLERY



ReForest Now
Growing Rainforest Together



THANK YOU, SAP

A succesful outcome was achieved with this second donation,

Bukit Mas was reinforced with this project. We were lucky enough to have had tiger sightings during this period and the local people working on the site were grateful for continuous income extending up to the end of August.

I'm amazed at how well things have gone in Sumatra, I expected more challenges, but if anything we learned that just being present in these locations can do a lot to stop illegal encroachment and keep authorities on their toes about potential threats to the forests.

Our forest patrols are now active for several months and ongoing plantings will be done further south towards Bukit Lawang. Barack Obama and Leonardo DiCaprio had spoken at length to the public about the value of this place. We believe we can pick up where others had started in conserving Gunung Leuser National Park. At this time, we're one of the only groups active in our section. That's this alliance of organisations. Thanks for being the driver.

Yours sincerely,



Maximo Bottaro - Co-Founder & President of ReForest Now



ReForest Now

Growing Rainforest Together



APPENDIX

SPECIES LIST

BUKIT MAS

We planted **35 species** in Bukit mas. Seeds and Seedlings are raised out of the local rainforest, which is safe for genetic diversity in a healthy ecosystem as the one in Bukit mas.

<i>Alstonia scholaris</i>	Devil Tree
<i>Aporosa frutescens</i>	Kopi-Kopi
<i>Archidendron pauciflorum</i>	Jengkol
<i>Artocarpus elasticus</i>	Terap
<i>Artocarpus heterophyllus</i>	Jackfruit
<i>Artocarpus integer</i>	Cempedak
<i>Commersonia batramia</i>	Andilau/ Brown Kurrajong
<i>Dehaasia incrassata</i>	Medang
<i>Durio zibethinus</i>	Durian
<i>Ficus fistulosa</i>	Luwingan/ Common Yellow-Stem Fig
<i>Hibiscus macrophyllus</i>	Largeleaf Rosemallow
<i>Litsea elliptica</i>	Unknown
<i>Litsea sp.</i>	Medang
<i>Macaranga bancana</i>	Marak Semut
<i>Macaranga gigantea</i>	Mahang Gajah
<i>Macaranga indica</i>	Mahang Mahang
<i>Macaranga tanarius</i>	Marak Biasa/ Nasturtium Tree

SPECIES LIST

BUKIT MAS
CONT.

<i>Macaranga triloba</i>	Three Lobed Macaranga
<i>Mallotus pinaculatus</i>	Balak Angin
<i>Mangifera indica</i>	Kuini
<i>Mangifera odorata</i>	Mango
<i>Mitragyna speciosa</i>	Kratom
<i>Nauclea orientalis</i>	Gempol/ Leichhardt Tree
<i>Nephelium lappaceum</i>	Rambutan
<i>Parkia javanica</i>	Tree Bean
<i>Parkia speciosa</i>	Bitter Bean
<i>Pometia speciosa</i>	Island Lychee
<i>Pterospermum acerifolium</i>	Broadleaf Bayur
<i>Pterospermum javanicum</i>	Bayur
<i>Sandoricum koetjape</i>	Santol
<i>Streblus asper</i>	Serut/ Siamese Rough Bush
<i>Syzygium malaccense</i>	Malay Apple
<i>Syzygium polyanthum</i>	Indonesian Bay Leaf
<i>Terminalia catappa</i>	Ketapang/ Tropical Almond
<i>Vitex pinnata</i>	Halaban

**THANK
YOU!**

SAP

®

RN

ReForest Now

Together, we can bring back the rainforest!