



REFOREST NOW

# PLANTING REPORT

---

JUNE 01





## QUDOS & REFOREST NOW

In January 2020 Reforest Now recieved the donation of \$50,000 AUD from Qudos bank.

Reforest Now has used this donation for organisational development, purchasing essential equipment for plantings, and for the planting of 2000 trees in northern NSW and Queensland.

This report is the proof of delivery for the 2000 trees planted on behalf of Qudos. These trees have been planted in various location as part of our ongoing plantings that aim to restore cleared land and bring back native rainforest where it once stood.

Thank you for supporting our vision of reforestation and rainforest conservation in the subtropics of Australia.

Maximo Bottaro  
President

Zia Flook  
Director of Partnerships and and  
Communication



## PLANTING FACTS

Planting trees and restoring forest land is one of the most effective ways to mitigate climate change and conserve forest ecosystems.

Trees have an immense potential to absorb carbon dioxide, provide food and habitat for native flora, to regulate regional and national climate, and provide humans with beauty and resources. The forest is a home, and one of our greatest treasures that needs our support now more than ever before.

The 2000 trees Qudos bank has funded have been planted on six different sites (five in NSW and one in QLD) alongside trees from other donors and projects. These sites have been chosen for their ecological value being key sites for connecting fragmented remnant rainforest and where native birds and wallabies live and breed.



**2,000**

**TREES PLANTED**



**50**

**SPECIES  
PLANTED**



**0.52**

**HECTARES  
RESTORED**



**494**

**TONES CO2  
SEQUESTERED**

# PLANTING SITES



# NORTHERN NSW

The wider subtropical forest of the region of northern NSW is the Big Scrub rainforest that once stood as Australia's largest expanse of subtropical rainforest with immense biodiversity. It is now standing at only 1% of its former size due to agricultural clearing.

Our work in this region is to reforest this cleared land and buffer existing patches of rainforest for their longevity and to support the species within. We work with landholders who wish to see forest back on their property and who agree to protect these trees from clearing.

## Planting sites

### Mullumbimby

1) Coolamon Scenic Drive -28.542708° 153.497058°

- 53 Trees

2) Sheafes Road -28.605367° 153.454111°

- 250 Trees

3) Mullumbimby Steiner school -28.557808° 153.460214°

- 521 Trees

4) Lomandra lane -28.55° 153.49°

-500 Trees

### Federal

1) Federal Road -28.651583° 153.455717°

- 247 Trees

# NORTHERN NSW

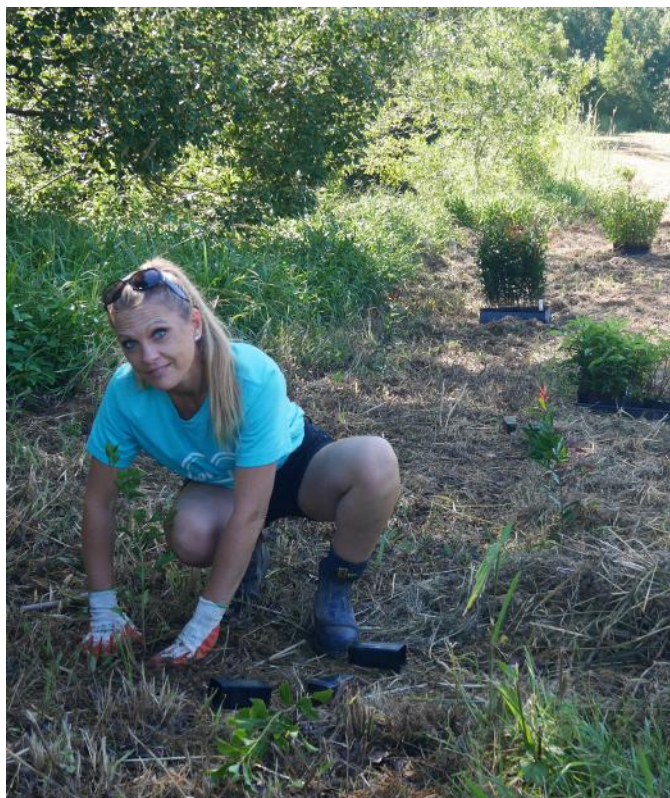


## 3) Mullumbimby Steiner School

Our plantings at the Mullumbimby Steiner School have been completed for the purposes of restoring riparian rainforest along the creek that runs through the middle of the school. Riparian restoration is important for various reasons; reduced evaporation for sun exposure on waterways, support of high numbers of endangered species that live along waterways (rainforest waterways typically have the highest diversity within rainforests), support aquatic ecosystems often unconsidered by restoring creek function, increase filtration and water storage adjacent to the creek which increases the water retention of the surrounding soil all year round. 2000 trees were planted along the existing creek. The school has already planted thousands of trees along the creek (up to 7 years of age). This planting was this years contribution to the growing rainforest at Mullumbimby Steiner School.



## NORTHERN NSW



### 4) Lomandra Lane, Mullumbimby.

The site consisted of approximately a hectare of 30 meter wide creek edge that is partially restored on both sides and represents an incredible opportunity for large scale creek restoration. We hope to add thousands more trees to the property in the near future. In March 2020 we planted over 60 species of riparian rainforest trees suited for this location and to connect fragments along the creek bed.

The site contains an almost extinct species of plant known as Brush Sauropus. We planted to buffer it and protect it by thicken the rainforest around and potential for it to expand away from the banks of the creek. Once the forest is established in 3 years time, we will remove the weeds that buffer it from open sun and grass invasion currently, as was the plan of the local landcare group. Due to the COVID-19 outbreak we made the decision on March 16th to close our plantings to the public. We love to have the local community attend plantings but we also want to foster the safest environment possible. This planting was carried out by our own team and the residents of the property.

# ATHERTON TABLELANDS QLD

In Queensland we planted the Qudos trees in Atherton Tablelands. The Atherton Tableland is a fertile plateau which is part of the Great Dividing Range in Queensland, Australia.

The site has had over 100,000 trees planted in effort to expand suitable habitat for over 40 species of birds that live in the Lake Barrine area, which is a highly restricted habitat space. This was our first planting on this site we will continue to work here in the future to continue the existing efforts here.

The tableland contains several small remnants of the rainforest which once covered it, many of which are now protected in national parks. It is classified by BirdLife International as one of Australia's Important Bird Areas, supporting over 1% of the world population of the sarus crane and a significant population of the bush stone-curlew. Twelve species of birds are endemic to this area and the mountain ranges immediately south: Atherton scrubwren, Bower's shrikethrush, bridled honeyeater, chowchilla, fernwren, golden bowerbird, grey-headed robin, Macleay's honeyeater, mountain thornbill, pied monarch, tooth-billed bowerbird and Victoria's riflebird.

## **Planting site**

Lake Barrine, Atherton -17.246880° 1145.650767°

- 430 Trees

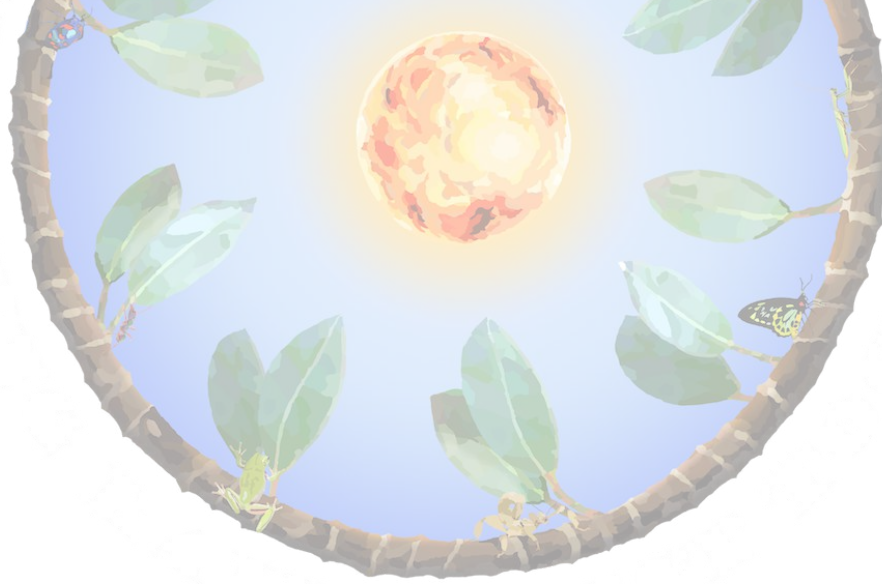
# LAKE BARRINE



Lake Barrine, Atherton



Lake Barrine, Atherton



*"There is a magic machine that sucks carbon out of the air,  
costs very little, and builds itself. It's called a tree,"  
- Greta Thunberg*

[WWW.REFORESTNOW.ORG.AU](http://WWW.REFORESTNOW.ORG.AU)

[FACEBOOK.COM/REFORESTNOWAUSTRALIA/](https://FACEBOOK.COM/REFORESTNOWAUSTRALIA/)

[INSTAGRAM @REFORESTNOW\\_AUSTRALIA](https://INSTAGRAM.COM/@REFORESTNOW_AUSTRALIA)

Reforest Now is an Australian environmental non-government and non-profit organisation.

Australian Business Number: 40 887 914 802

Reforest Now is registered as a charity under the above ABN with the Australian Charities and Non-profits Commission with the charitable fundraising license number (AI) 1800070

