



Planting Report

scJohnson

6,000 rainforest trees planted
for \$30,000 donated in March 2023

*Prepared by :
Kallen Marecic
Maximo Bottaro*

ReForest Now Ltd
Trading as: ReForest Now

ABN 40 887 914 802 | ACN 656 965 856

3/11 Booyun Street
Brunswick Heads NSW 2483



ReForest Now is registered as a charity with
the Australian Charities and Not-for-profits
Commission (ACNC). NSW License Number: CFN 24812.

Donations over \$2.00 are tax deductible.



We acknowledge the the Aboriginal People of the
Bundjalung Nation as the Traditional Custodians of the land
we work on and thank them for protecting ecosystems since
time immemorial.

RAINFORESTS FOR RESILIENCE

Last year we faced historic flooding across eastern Australia. The Northern Rivers was hit hard, with the Wilsons River in Lismore reaching its highest-ever peak of 14.4m.

Nature-based solutions (NBS) are actions and policies that protect, manage and restore natural ecosystems while addressing societal challenges.

Our project is crucial for building community resilience against future flooding. Rainforests have powerful mitigating functions that can protect communities against the increasing number of severe disasters we face, such as droughts, bushfires and floods.

How do rainforests help?

- Rainforest root systems form strong barriers against floodwaters.
- Roots prevent soil silting in creek/river beds and increase water-holding capacity.
- Rainforests retain large amounts of water and release it slowly throughout the year.

Thank you SC Johnson for investing in a nature-based solution that will help our community become more resilient against extreme weather events.



PLANTING SUMMARY

Date	Location	Number of trees planted for SCJ
April 20, 2023	356 Ridgewood Rd, Rosebank NSW	1,318
April 21, 2023	1101 The Pocket Rd, Main Arm NSW	1,507
May 18, 2023	113 Stewarts Rd, Clunes NSW	1,206
May 19, 2023	20 Byron Creek Rd, Coopers Shoot NSW	1,676
May 25, 2023	113 Stewarts Rd, Clunes NSW	293
	TOTAL	6,000

Additional reporting information and all contributing donors can be found at reforestnow.org.au/findmytrees



MAPPING

356 RIDGEWOOD RD, ROSEBANK (APRIL 20)



1,318 SCJ trees were planted here to return cleared land to subtropical rainforest. Although the landscape here contains many invasive *Camphor laurel* trees, this particular site has some rainforest resilience. There is regrowth of natives nearby and this planting will further enrich the area!



Photos from the day, April 20th - 356 Ridgewood Rd, Rosebank



SPECIES LIST (APRIL 20)

Acacia disparrima ssp. *disparrima*

Acacia maidenii

Allocasuarina littoralis

Allocasuarina torulosa

Alphitonia excelsa

Austromyrtus dulcis

Backhousia myrtifolia

Brachychiton acerifolius

Breynia oblongifolia

Callistemon viminalis

Castanospora alphandii

Diploglottis australis

Dysoxylum mollissimum

Elaeocarpus reticulatus

Eucalyptus grandis

Ficus coronata

Ficus rubiginosa

Flindersia bennettiana

Flindersia schottiana

Hymenosporum flavum

Leptospermum petersonii

Litsea reticulata

Lomandra longifolia

Lophostemon confertus

Melaleuca quinquenervia

Myrsine howittiana

Pittosporum undulatum

Polyscias elegans

Stenocarpus sinuatus

Syzygium floribundum

Syzygium francisii

Syzygium luehmannii

Trema tomentosa var. *viridis*

Tristaniopsis laurina

Brush Ironbark Wattle

Maiden's Wattle

Black Oak

Forest Oak

Red Ash

Midgen Berry

Cinnamon Myrtle

Flame Tree

Breynia

Weeping Bottlebrush

Brown Tamarind

Native Tamarind

Red Bean

Blueberry Ash

Flooded Gum

Creek Sandpaper Fig

Rusty Fig

Bennetts Ash

Cudgerie

Native Frangipani

Lemon-scented Teatree

Bolly Gum

Spiny head Mat-rush

Brush Box

Broad-leaf Paperbark

Brush Muttonwood

Sweet Pittosporum

Celerywood

Firewheel Tree

Weeping Lilly Pilly

Giant Water Gum

Riberry

Poison Peach

Water Gum



MAPPING

1101 THE POCKET RD, MAIN ARM (APRIL 21)



SC Johnson funded this entire day of planting. Several gaps were infilled on this property between existing rainforest, where we have been undertaking regeneration works for years with the landholder.

To plant in between successfully rehabilitated areas is a normal part of rainforest regeneration.

We note, the landholders were extremely grateful for your support. They have already expended a lot of funds and energy to reach the stage it is at now.



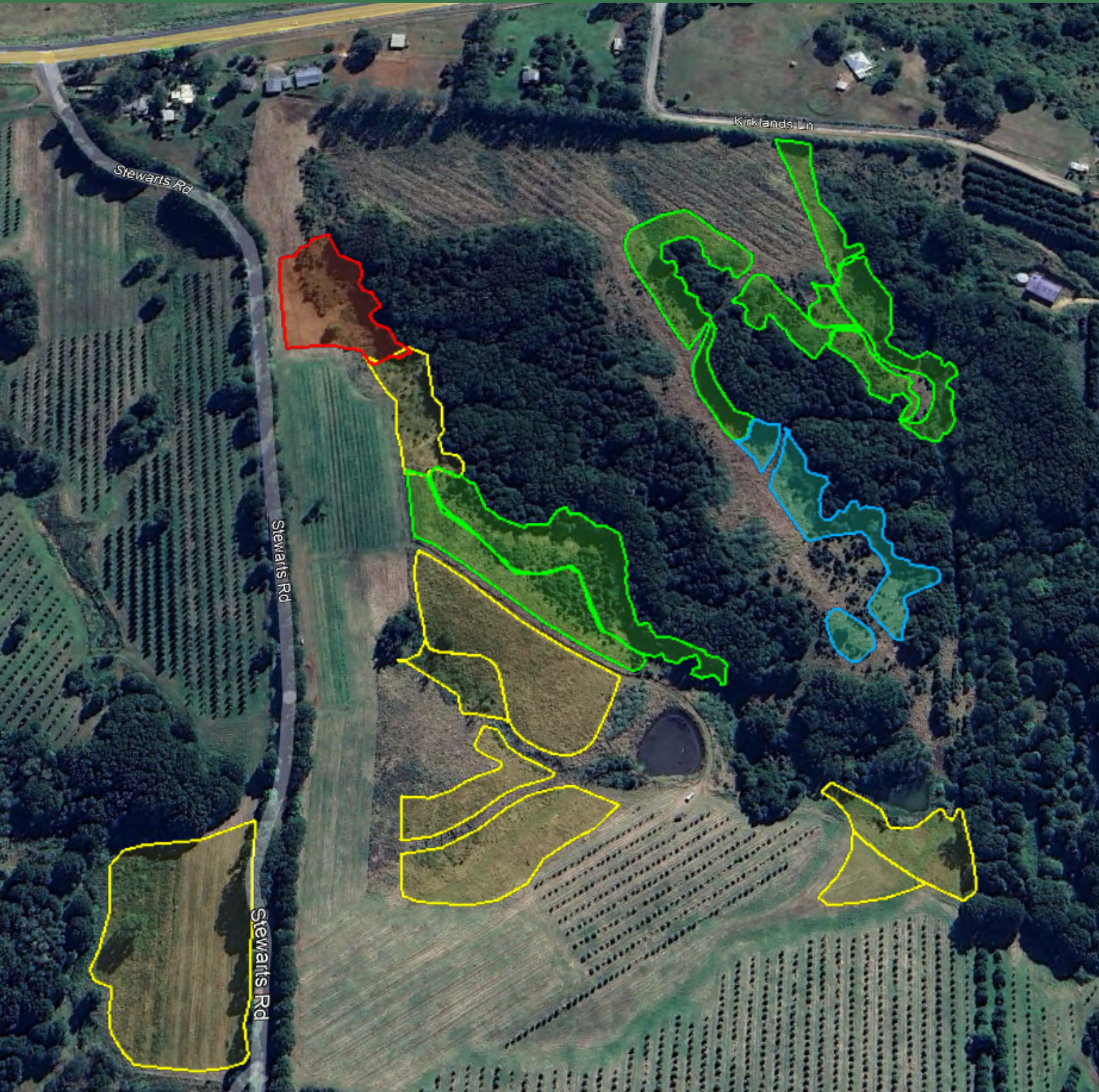
SPECIES LIST (APRIL 21)

24 species were used to strategically make up for ecological gaps in the forest canopy and shrub layer. As such, this is a very unusual species list for a rainforest planting and included were species to address the weaknesses of the forest onsite. This includes some mature, long-lived species, fast growers, birdwing vine for established areas, shrub layer and more.

<i>Argyrodendron trifoliolatum</i>	White Booyong
<i>Castanospermum australe</i>	Black Bean
<i>Cryptocarya obovata</i>	Pepperberry
<i>Cupaniopsis anacardioides</i>	Tuckeroo
<i>Dianella caerulea</i>	Blue Flax Lily
<i>Diospyros pentamera</i>	Myrtle Ebony
<i>Diploglottis australis</i>	Native Tamarind
<i>Dysoxylum mollissimum</i>	Red Bean
<i>Elaeocarpus grandis</i>	Blue Quandong
<i>Elaeocarpus reticulatus</i>	Blueberry Ash
<i>Ficus coronata</i>	Creek Sandpaper Fig
<i>Ficus virens</i>	White Fig
<i>Gahnia clarkei</i>	Tall Saw-sedge
<i>Glochidion sumatranum</i>	Umbrella Cheese Tree
<i>Gmelina leichhardtii</i>	White Beech
<i>Guioa semiglauc</i>	Guioa
<i>Lomandra longifolia</i>	Spiny head Mat-rush
<i>Melaleuca quinquenervia</i>	Broad-leaf Paperbark
<i>Melicope elleryana</i>	Pink Euodia
<i>Pararistolochia praevenosa</i>	Birdwing Butterfly Vine
<i>Psychotria loniceroides</i>	Hairy Psychotria
<i>Syzygium floribundum</i>	Weeping Lilly Pilly
<i>Syzygium luehmannii</i>	Riberry
<i>Syzygium moorei</i>	Durobby

MAPPING

113 STEWARTS RD, CLUNES (MAY 18)



The image here shows just a small section of the total 250,000 trees planted as part of the Banyula ("Place of many trees") project. Your trees for this specific day are outlined in [blue](#).

They have been planted in a bush regeneration zone containing many large native trees that have somehow grown despite the *Camphor laurel* weed domination. We are currently culling weeds to enable these forests to expand. Your trees will help reclaim a huge area.

SPECIES LIST (MAY 18)

A full complement of rainforest species were used to reclaim open bare paddock on this day. The site - 113 Stewarts Rd, Clunes - has already had 184 different species planted! Days like this explain how, with so many in one day going out in our trailers.

<i>Abrophyllum ornans</i>	Native Hydrangea
<i>Acacia disparrima ssp. disparrima</i>	Brush Ironbark Wattle
<i>Acacia maidenii</i>	Maiden's Wattle
<i>Allocasuarina littoralis</i>	Black Oak
<i>Allocasuarina torulosa</i>	Forest Oak
<i>Alocasia brisbanensis</i>	Cunjevoi Lily
<i>Alphitonia excelsa</i>	Red Ash
<i>Araucaria cunninghamii</i>	Hoop Pine
<i>Callicoma serratifolia</i>	Black Wattle
<i>Cordyline stricta</i>	Narrow-leaved Palm Lily
<i>Cryptocarya obovata</i>	Pepperberry
<i>Dianella caerulea</i>	Blue Flax Lily
<i>Elaeocarpus grandis</i>	Blue Quandong
<i>Elattostachys nervosa</i>	Green Tamarind
<i>Eucalyptus grandis</i>	Flooded Gum
<i>Eucalyptus microcorys</i>	Tallowwood
<i>Ficus fraseri</i>	Sandpaper Fig
<i>Ficus macrophylla</i>	Moreton Bay Fig
<i>Ficus obliqua</i>	Small-leaved Fig
<i>Ficus virens</i>	White Fig
<i>Flindersia schottiana</i>	Cudgerie
<i>Gahnia sieberiana</i>	Red-fruit Saw-sedge
<i>Hibiscus heterophyllus</i>	Native Rosella
<i>Litsea reticulata</i>	Bolly Gum
<i>Lomandra hystrix</i>	Forest Mat-rush
<i>Lophostemon confertus</i>	Brush Box
<i>Macaranga tanarius</i>	Macaranga

SPECIES LIST (MAY 18) CONTINUED

Mallotus discolor

Leptospermum petersonii

Melaleuca quinquenervia

Pararchidendron pruinoseum

Pittosporum undulatum

Podocarpus elatus

Polyscias elegans

Psychotria loniceroides

Syzygium francisii

Syzygium hemilamprum

Syzygium ingens

Syzygium luehmannii

Syzygium moorei

Syzygium oleosum

Toeckima dasyrrhache

Tristaniopsis laurina

Yellow Kamala

Lemon-scented Teatree

Broad-leaf Paperbark

Snow wood

Sweet Pittosporum

Plum Pine

Celerywood

Hairy Psychotria

Giant Water Gum

Broad-leaved Lilly Pilly

Red Apple

Riberry

Durobby

Blue Lilly Pilly

Blunt-leaved Steelwood

Water Gum



Photos from the day, May 18th - 113 Stewarts Rd, Clunes



MAPPING

20 BYRON CREEK RD, COOPERS SHOOT (MAY 19)



Below is an image from the day. Your day! SC Johnson funded this entire planting day too. This area of the Byron Shire, while seemingly looking good, has some of the most degraded land and lowest numbers of trees. There are, however, several former creeks that could regenerate naturally if there are seeds in the area to sprout in the damp soil. In less than 3 years, your trees will begin seeding the landscape.



SPECIES LIST (MAY 19)

We are proud to have included 45 native rainforest species on this one day of planting - a planting of just 1,676 trees. This is only possible with a lot of preparation work by the very knowledgeable people in our nursery.

<i>Acacia disparrima ssp. disparrima</i>	Brush Ironbark Wattle
<i>Acacia maidenii</i>	Maiden's Wattle
<i>Acacia melanoxylon</i>	Blackwood
<i>Acronychia oblongifolia</i>	Common Acronychia
<i>Alphitonia excelsa</i>	Red Ash
<i>Alphitonia petriei</i>	Pink Ash
<i>Archontophoenix cunninghamiana</i>	Bangalow Palm
<i>Banksia integrifolia</i>	Coastal Banksia
<i>Brachychiton acerifolius</i>	Flame Tree
<i>Callicoma serratifolia</i>	Black Wattle
<i>Castanospermum australe</i>	Black Bean
<i>Commersonia bartramia</i>	Brown Kurrajong
<i>Cordyline stricta</i>	Narrow-leaved Palm Lily
<i>Cryptocarya obovata</i>	Pepperberry
<i>Cupaniopsis anacardioides</i>	Tuckeroo
<i>Davidsonia jerseyana</i>	Davidson's Plum
<i>Diploglottis australis</i>	Native Tamarind
<i>Duboisia myoporoides</i>	Corkwood
<i>Dysoxylum mollissimum</i>	Red Bean
<i>Elaeocarpus grandis</i>	Blue Quandong
<i>Elaeocarpus reticulatus</i>	Blueberry Ash
<i>Ficus coronata</i>	Creek Sandpaper Fig
<i>Ficus obliqua</i>	Small-leaved Fig
<i>Ficus virens</i>	White Fig
<i>Flindersia australis</i>	Teak
<i>Glochidion ferdinandi</i>	Cheese Tree
<i>Gmelina leichhardtii</i>	White Beech
<i>Guioa semiglauca</i>	Guioa
<i>Harpullia pendula</i>	Tulipwood

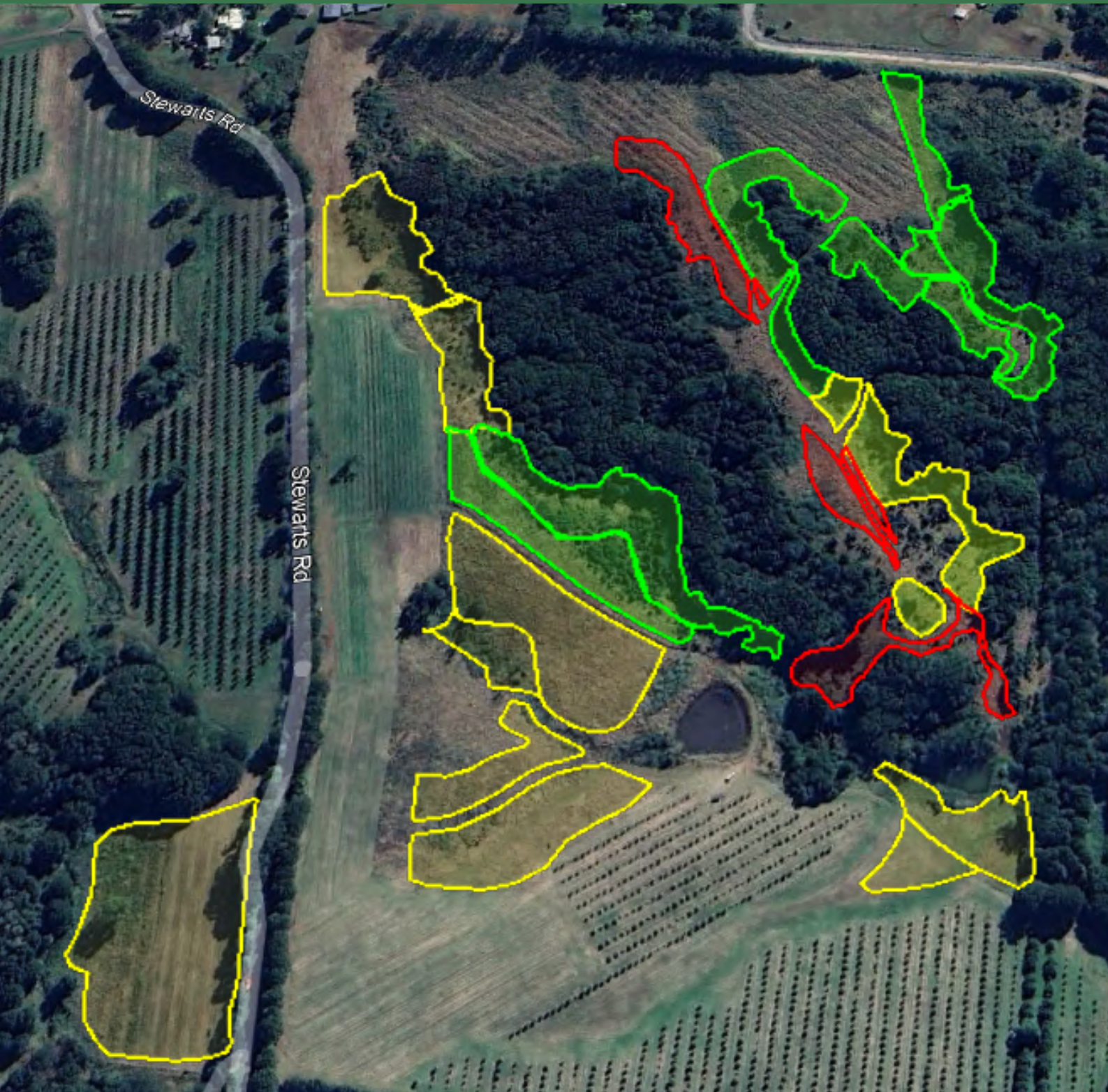
SPECIES LIST (MAY 19) CONTINUED

Hicksbeachia pinnatifolia
Homalanthus populifolius
Lepiderema pulchella
Leptospermum polygalifolium
Litsea reticulata
Melicope elleryana
Pittosporum undulatum
Podocarpus elatus
Polyscias elegans
Stenocarpus sinuatus
Sterculia quadrifida
Syzygium floribundum
Syzygium hemilamprum
Syzygium ingens
Syzygium moorei
Trema tomentosa var. *viridis*

Red Bopple Nut
Bleeding Heart
Fine-leaved Tuckeroo
Jelly Bush
Bolly Gum
Pink Euodia
Sweet Pittosporum
Plum Pine
Celerywood
Firewheel Tree
Peanut Tree
Weeping Lilly Pilly
Broad-leaved Lilly Pilly
Red Apple
Durobby
Poison Peach

MAPPING

113 STEWARTS RD, CLUNES (MAY 25)



May 25 planting shown in **red**.
This area includes 293 of your trees and 4,119 to four other donors.

The yellow and green zones have been funded by our partners, some local and others global.
The forested areas visible in between are active rainforest regeneration zones, where our bush regeneration experts are working from the inside to eliminate weeds and promote the natives.

SPECIES LIST (MAY 25)

<i>Acacia disparrima ssp. disparrima</i>	Brush Ironbark Wattle
<i>Acacia floribunda</i>	White Sally
<i>Acacia maidenii</i>	Maiden's Wattle
<i>Acacia melanoxylon</i>	Blackwood
<i>Alchornea ilicifolia</i>	Native Holly
<i>Allocasuarina littoralis</i>	Black Oak
<i>Alphitonia excelsa</i>	Red Ash
<i>Alphitonia petriei</i>	Pink Ash
<i>Backhousia myrtifolia</i>	Cinnamon Myrtle
<i>Brachychiton acerifolius</i>	Flame Tree
<i>Brachychiton discolor</i>	Lacebark Tree
<i>Breynia oblongifolia</i>	Breynia
<i>Callicoma serratifolia</i>	Black Wattle
<i>Castanospermum australe</i>	Black Bean
<i>Elaeocarpus obovatus</i>	Hard Quandong
<i>Elaeocarpus reticulatus</i>	Blueberry Ash
<i>Flindersia australis</i>	Teak
<i>Flindersia schottiana</i>	Cudgerie
<i>Glochidion ferdinandi</i>	Cheese Tree
<i>Grevillea robusta</i>	Silky Oak
<i>Lophostemon confertus</i>	Brush Box
<i>Pararchidendron pruinosum</i>	Snow wood
<i>Stenocarpus sinuatus</i>	Firewheel Tree
<i>Syzygium francisii</i>	Giant Water Gum
<i>Trema tomentosa var. viridis</i>	Poison Peach
<i>Tristaniopsis laurina</i>	Water Gum

THANK YOU, SC JOHNSON

A big thank you to SC Johnson for coming straight out of the gate with a significant first donation to ReForest Now.

This level of funding is meaningful and impactful on the ground. 6,000 trees is not a small forest and quite an experience to walk through after a few years of growth. For reference, please view this recent [reporting video](#) we made for other donors, which hopefully provides some insight into the impact of your donation.

Thank you and we hope to speak again soon. Ideally, we would like someone from SCJ to visit so that we can show you around our sites, demonstrating what we can accomplish together with high-diversity rainforest plantings here in Northern NSW.

If you have any further queries please contact me on

+61 415 134 941

or

info@reforestnow.org.au

Yours sincerely,



Maximo Bottaro - Co-Founder & CEO of ReForest Now





Together, we can bring back the rainforest.



ReForest Now

Growing Rainforest Together

scJohnson