

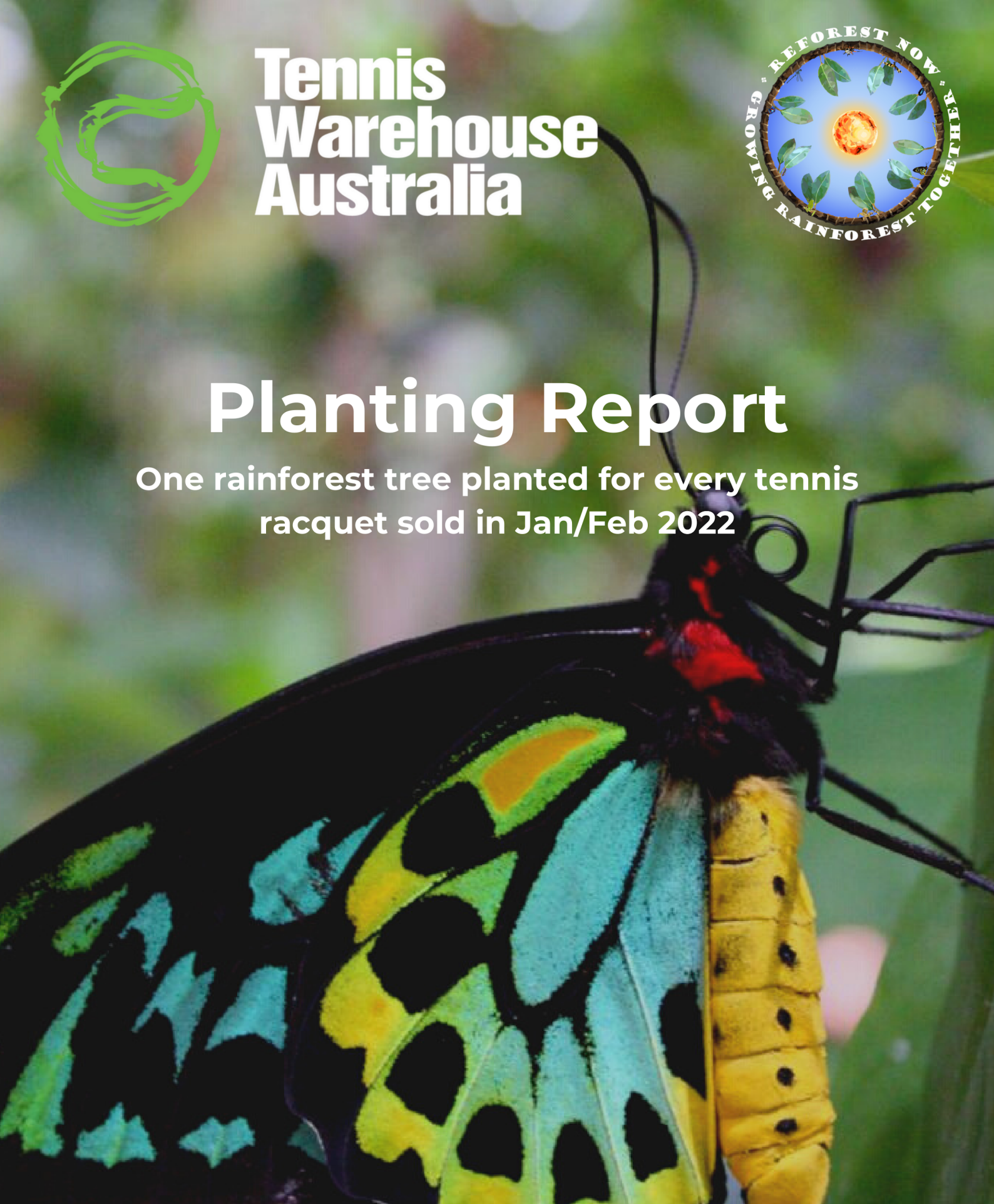


**Tennis
Warehouse
Australia**



Planting Report

One rainforest tree planted for every tennis
racquet sold in Jan/Feb 2022



Prepared by :

Maximo Bottaro - Editor
Kallen Marecic - Writer
Franzi Kinzel - Content

ReForest Now

info@reforestnow.org.au
(+61)415 134 941

ReForest Now Ltd
Trading as: ReForest Now

ABN 40 887 914 802 | ACN 656 965 856

3/11 Booyun Street
Brunswick Heads NSW 2483



ReForest Now is registered as a charity with
the Australian Charities and Not-for-profits
Commission (ACNC). NSW License Number: CFN 24812

DGR status pending. Our auspicing organisation,
Mullum SEED, can process tax-deductible donations.
Please contact partnerships@reforestnow.org.au
for details.

We acknowledge the Aboriginal People of the
Bundjalung Nation as the Traditional Custodians
of the land we work on and recognise their
continuing connection to land and waters of this
beautiful region, and thank them for protecting
these ecosystems since time immemorial.



Introduction

Thank you Tennis Warehouse Australia for entrusting ReForest Now to plant trees in Australia on your behalf. By taking the thoughtful step of running this campaign you have enabled 0.5 hectares of cleared land to begin returning to lowland subtropical rainforest - a critically endangered ecosystem.

Walking just a few metres into Booyong Nature Reserve, in Northern New South Wales, demonstrates the gravity of this project. The expansion of this forest will enhance a number of ecosystem services, including local disaster mitigation and fighting climate change. Your contribution to the Banyula (*Place of many trees*) project is important. Together we will see the total area of rainforest here expand from 13 ha to over 117 ha.

2,100 trees planted

Your 2,100 trees were planted directly adjacent to the very special Booyong Nature Reserve near Clunes NSW on August 31, 2022 (*pictured*).

We used a diverse mix of exactly 100 species in your planting, to help recreate the ecosystem that once blanketed the Northern Rivers region. Today, less than 1% remains. Booyong is one of very few reserves left.

Your trees were included in a total of 5,235 trees planted that day by our team. Additional reporting information and contributing donors can be found at reforestnow.org.au/findmytrees

SUMMARY OF OUTCOMES

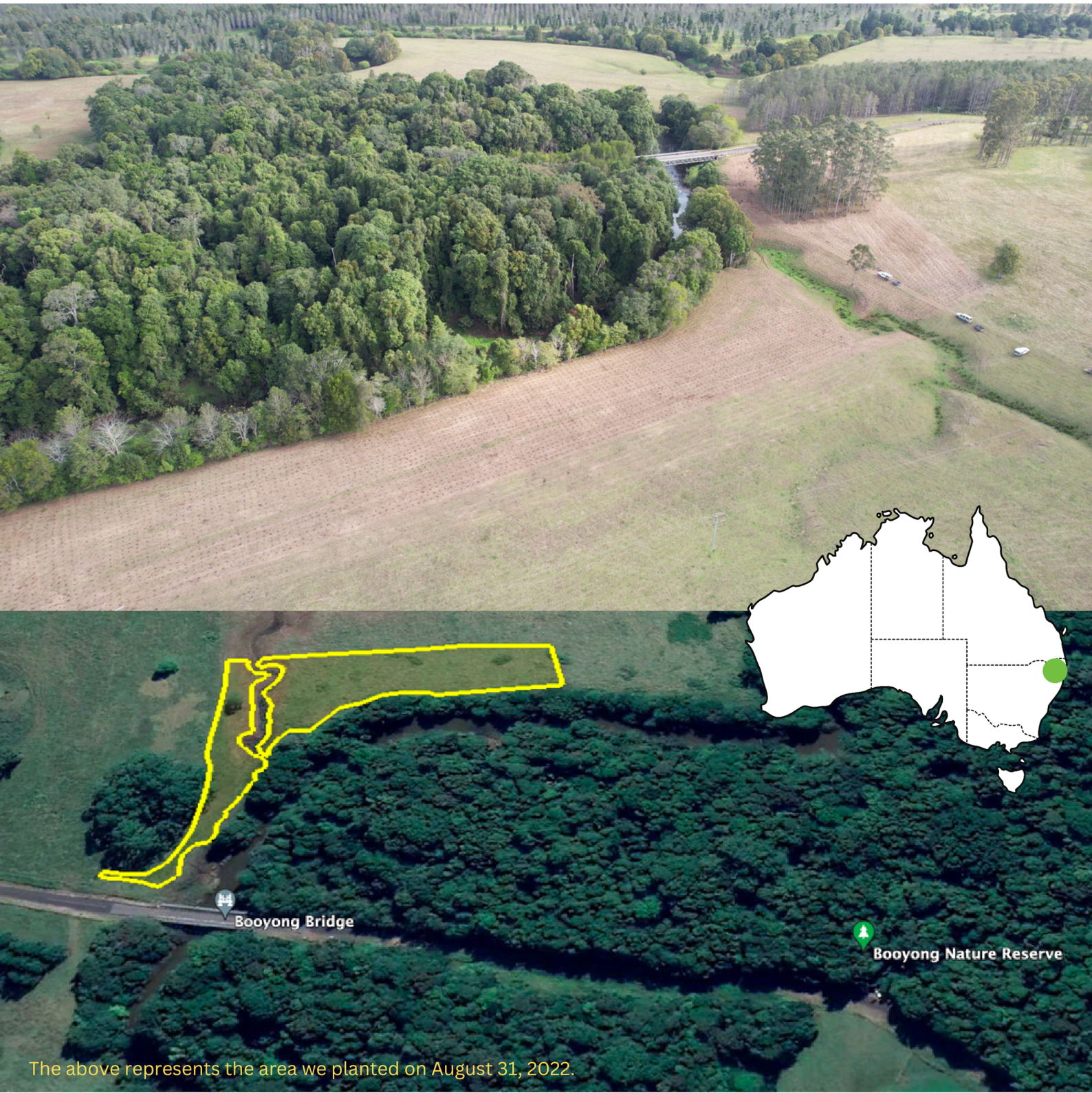
- 2,100 native rainforest trees planted
- 0.5 hectares of burgeoning critically endangered subtropical rainforest
- 100 species used, including many that are threatened
- ~432t of CO₂e to be sequestered



A remnant unable to expand

Booyong Nature Reserve is an ecologically-significant rainforest remnant of the former "Big Scrub". The site escaped the widespread clearing by early European settlers that saw most of the Big Scrub rainforest converted to agricultural land. It supports an example of mature rainforest trees and is home to endangered plants such as red lilly pilly, thorny pea and brush sauropus. It also supports the largest known population of the endangered herb isoglossa (*Isoglossa eranthemoides*) in any rainforest remnant.

This rare community of plants provide habitat to precious fauna including the Platypus, many types of rainforest birds, and the Richmond Birdwing Butterfly for example. Sadly, these species have been geographically restricted and surrounded by intensively grazed farm land - until now. We have an opportunity to rebuild their home and help these threatened species recover.



The above represents the area we planted on August 31, 2022.

Bringing back the Big Scrub Rainforest

The Big Scrub rainforest is home to an incredible array of life created from the rich volcanic soils of Wollumbin (Mt Warning). The unbroken forest once covered 75,000 hectares of northern NSW (an area larger than Singapore!) and was thick with trees, shrubs, ferns and vines.

Tragically, 99.6% of this unique ecosystem was decimated due to logging and land clearing for agriculture. By 1900 all that remained was less than 33 small, scattered patches called "remnants" (see bottom image). By the beginning of the 1990s most of the remnants were degrading under the impact of introduced and highly invasive weeds. As a result, many rare and endangered species are on the brink of extinction. We have a lot to save and a lot of damage to repair.

Together we are starting to undo the intensive and widespread clearing of early settlers in Australia. We're fighting against the ecological and climate crises.

Our mission is not just to discuss our dreams of seeing the rainforest restored, but rather to get out there, rapidly achieve outcomes of high ecological value, and report back to the people who made it happen - YOU.





Rainforests are dense, multi-layered ecosystems. As such, we plant trees ranging from growth sizes of 2 meters (shrubs and small trees) to 55 metres (emergent canopy trees). Around 4,000 stems per hectare.



Species Used (100)

Banana Bush	Firewheel Tree	Red Boppel Nut(VU)
Bangalow Palm	Foambark Tree	Red Cedar
Beetroot Tree	Giant Water Gum	Red Lilly Pilly (EN)
Birdwing Vine(sVU)	Green Bolly Gum	Red-fruited Laurel
Black Apple	Guilfoylia	Rosewood
Black Bean	Guioa	Rough Sawsedge
Black Walnut	Hairy Walnut	Scentless Rosewood
Black Wattle	Hairy-leaved Bolly Gum	Silky Oak
Blackwood	Illawarra Flame Tree	Small-leaved Lilly Pilly
Bleeding Heart	Jackwood	Small-leaved Tamarind(EN)
Blue Quandong	Kangaroo Apple	Smooth Wilkiea
Blunt-leaved Steelwood	Koda	Snow Wood
Blush Macaranga	Lemon-scented Teatree	Spiny-headed Mat-rush
Broad-leaved Lilly Pilly	Lilly Pilly	Steelwood
Brown Kurrajong	Milkbush	Strangling Fig
Brown Tamarind	Moreton Bay Fig	Sweet Pittosporum
Brush Box (sVU)	Narrow-leaved Palm Lily	Thin-leaved Coondoo
Brush Muttonwood	Native Frangipani	Thin-leaved Gardenia
Celery Wood	Native Mulberry	Tuckeroo
Cheese Tree	Native Peach	Tulipwood
Corkwood	Native Tamarind	Umbrella Cheese Tree
Cottonwood Hibiscus	Orange Berry	Veiny Wilkiea
Creek Sandpaper Fig	Palm-Lily	Walking-stick Palm
Crow's Ash	Pencil Cedar	Weeping Lilly Pilly
Crystal Creek Walnut(EN)	Pepperberry	White Ash
Cudgerie	Pink Lace Flower	White Aspen
Cunjevoi	Pink-flowered Doughwood	White Beech
Davidson Plum(EN)	Plum Myrtle	White Booyong
Deciduous Fig	Plum Pine	White Cedar
Diamond-leaf Pittosporum	Pointed-leaved Hovea	White Fig
Durobby(VU)	Red Apple	White Kamala
Featherwood	Red Ash	White Lace Flower(VU)
Fine-leaved Tuckeroo(VU)	Red Bean	Yellow Pearfruit
		Yellowwood

Conservation Status

(VU) Vulnerable
(sVU) Supports a
vulnerable species
(EN) Endangered



We hope that you can see the wonderful outcome of your donation through this report.

This is just the beginning of a 5+ year plan to see this site transform back into diverse, healthy and functioning forest.

Thank you for presenting these funds to ReForest Now so that we can restore critically endangered rainforest on your behalf.

If you have any further queries please contact me on

+61 415 134 941

or

info@reforestnow.org.au

Yours sincerely,

A handwritten signature in black ink, appearing to read 'Maximo Bottaro', written in a cursive style.

Maximo Bottaro - Co-Founder & President of ReForest Now





Thank you TWA.

**Together, we can
bring back the
rainforest**