



**Australian
College**
of Commerce & Management



Report 2: Plant a tree program



Prepared by

Sophie Rallings
Maximo Bottaro
Kallen Marecic

ReForest Now

info@reforestnow.org.au
(+61)415 134 941

ReForest Now Ltd
Trading as: ReForest Now

ABN 40 887 914 802 | ACN 656 965 856

3/11 Booyun Street
Brunswick Heads NSW 2483



ReForest Now is registered as a charity with the Australian Charities and Not-for-profits Commission (ACNC). NSW License Number: CFN 24812.

Donations over \$2.00 are tax deductible.



We acknowledge the the Aboriginal People of the Bundjalung Nation as the Traditional Custodians of the land we work on and thank them for protecting ecosystems since time immemorial.

BRINGING BACK THE BIG SCRUB RAINFOREST

The Big Scrub rainforest is home to an incredible array of life created from the rich volcanic soils of Wollumbin (Mt Warning). The unbroken forest once covered 75,000 hectares of Northern NSW (an area larger than Singapore!) and was thick with trees, shrubs, ferns and vines.

Tragically, 99.6% of this unique ecosystem was decimated due to logging and land clearing for agriculture. By 1900 all that remained was less than 33 small, scattered patches called "remnants" (see bottom image). By the beginning of the 1990s most of the remnants were degrading under the impact of introduced and highly invasive weeds. As a result, many rare and endangered species are on the brink of extinction. We have a lot to save and a lot of damage to repair.

Together we are starting to undo the intensive and widespread clearing of early settlers in Australia. We're fighting against the ecological and climate crises.

Our mission is not just to discuss our dreams of seeing the rainforest restored, but rather to get out there, rapidly achieve outcomes of high ecological value, and report back to the people who made it happen - YOU!



SUMMARY OF OUTCOMES

\$10,000 donated = 2,000 diverse rainforest trees planted to regenerate a critically endangered ecosystem in NSW.

Thanks to your generous donation in May 2023, a further 2000 rainforest trees have been planted over 4 days. This will be detailed in the pages following.

It is important to note that some of your trees have been planted nearby one of the few remaining remnants of the Big Scrub Rainforest - the Allansby Remnant (Site 1). The Allansby Remnant sits on a private property, surrounded by agricultural lands.

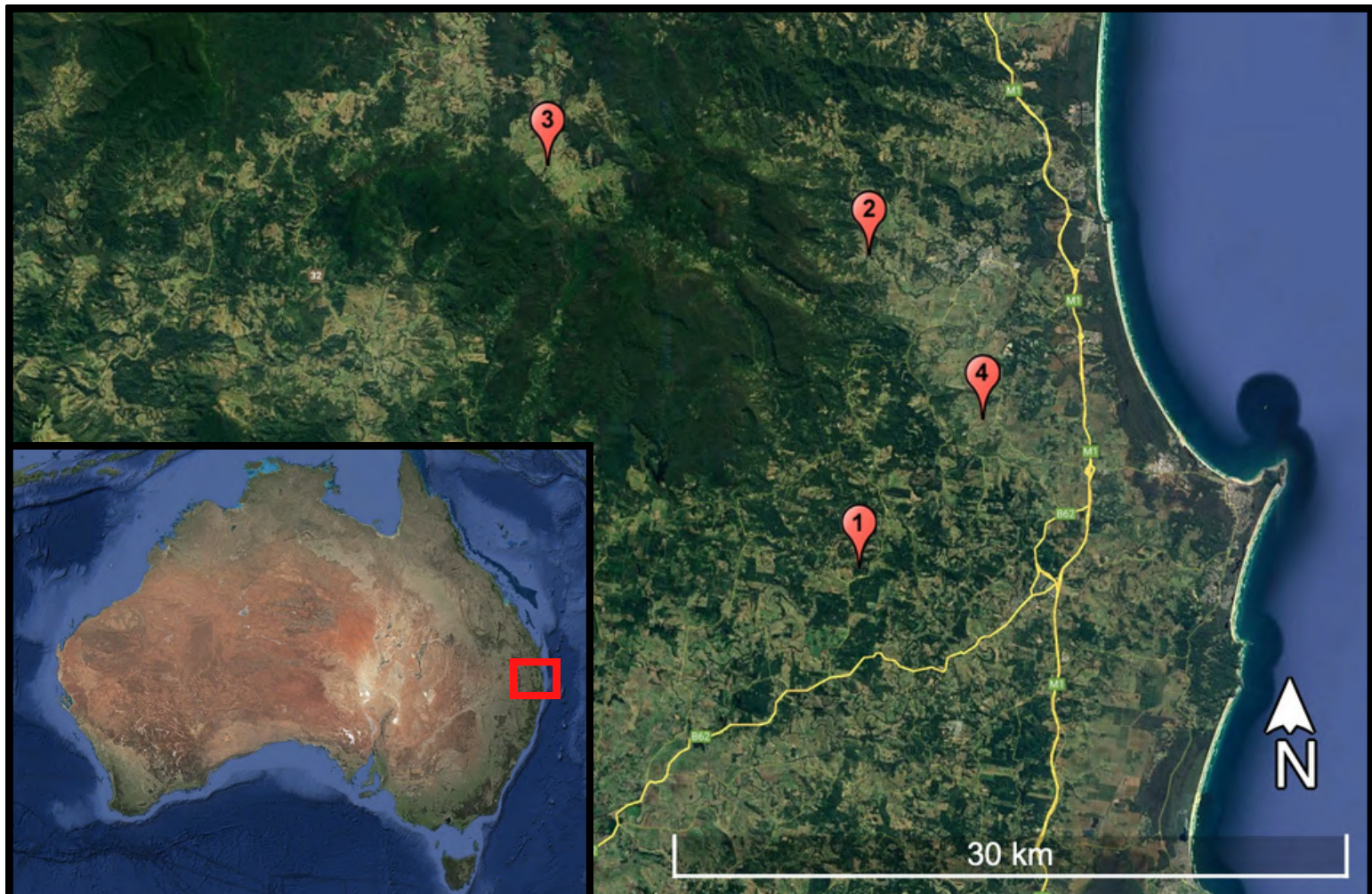
This remnant has retained significant ecological value, however, it has faced significant threats - including a serious infestation of the invasive madeira vine. In addition to planting trees to expand this habitat, our bush regeneration team is working to remove invasive species pressure within the remnant.

We are so grateful to have your ongoing support so that we can continue to do this important work!



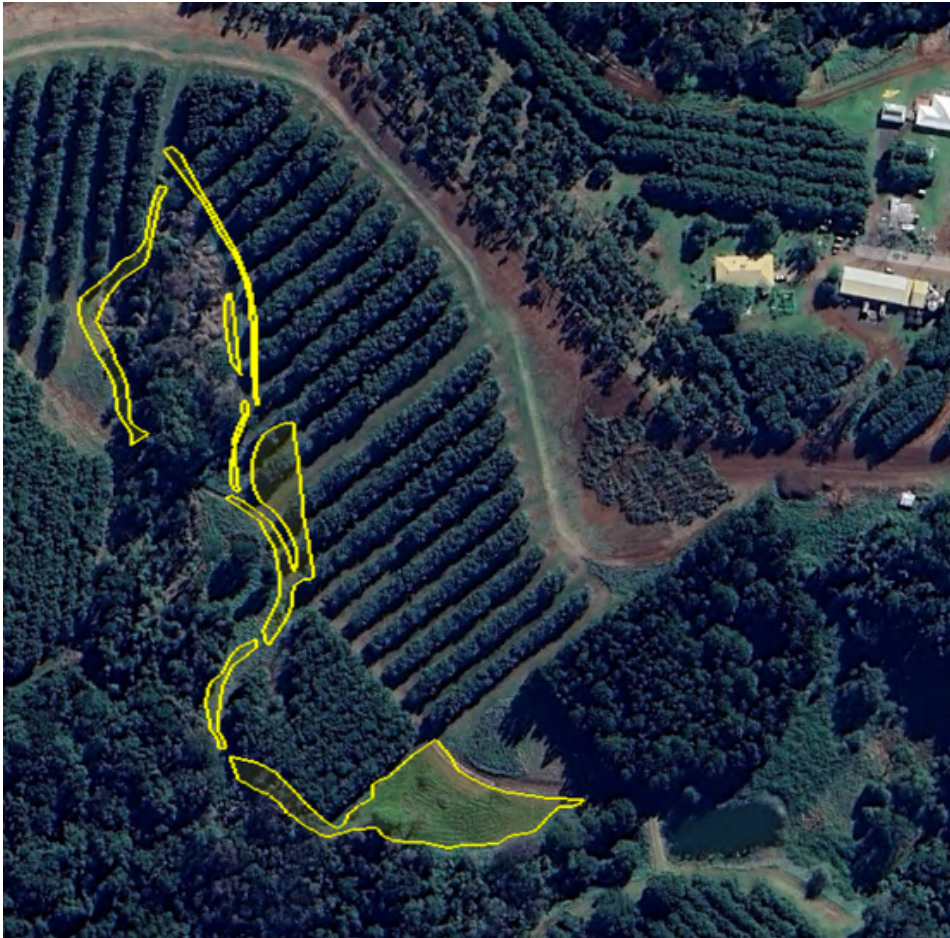
PLANTING SUMMARY

Site	Planting Date	Location	Number of ACCM trees planted
1	Oct 26, 2023	149 Federal Drive, Eureka NSW	150
2	Nov 2, 2023	551 Left Bank Road, Mullumbimby Creek NSW	850
3	Nov 9, 2023	900 Doon Doon Road, Doon Doon NSW	249
4	Nov 21, 2023	625 Myocum Road, Myocum NSW	751
TOTAL			2,000



MAPPING

149 FEDERAL DR, EUREKA (OCT 26TH)



This property is home to the Allansby Remnant - one of the last remaining stands of the Big Scrub Rainforest. In October, we planted over 4,000 trees, including 150 ACCM trees, adjacent to the remnant to expand this ecologically significant site.

We have done extensive plantings around this property since April 2021, totally around 50 000. This more recent planting will provide a “stepping stone” area of forest for wildlife and plant species, which have been confined to the remnant.



SPECIES LIST

<i>Acacia disparrima ssp. disparrima</i>	Brush Ironbark Wattle
<i>Acacia melanoxylon</i>	Blackwood
<i>Allocasuarina torulosa</i>	Forest Oak
<i>Alphitonia excelsa</i>	Red Ash
<i>Auranticarpa rhombifolia</i>	Hollywood
<i>Castanospora alphandii</i>	Brown Tamarind
<i>Cinnamomum oliveri</i>	Oliver's Sassafras
<i>Cryptocarya rigida</i>	Forest Maple
<i>Davidsonia jerseyana</i>	Davidson's Plum
<i>Diploglottis australis</i>	Native Tamarind
<i>Dysoxylum mollissimum</i>	Red Bean
<i>Elaeocarpus grandis</i>	Blue Quandong
<i>Elattostachys nervosa</i>	Green Tamarind
<i>Ficus fraseri</i>	Sandpaper Fig
<i>Ficus henneana</i>	Deciduous Fig
<i>Flindersia bennettiana</i>	Bennetts Ash
<i>Flindersia schottiana</i>	Cudgerie
<i>Glochidion ferdinandi</i>	Cheese Tree
<i>Karrabina benthamiana</i>	Red Carabeen
<i>Lophostemon confertus</i>	Brush Box
<i>Mallotus philippensis</i>	Red Kamala
<i>Melia azedarach var. australasica</i>	White Cedar
<i>Pittosporum revolutum</i>	Hairy Pittosporum
<i>Podocarpus elatus</i>	Plum Pine
<i>Rhodosphaera rhodanthema</i>	Deep Yellowwood
<i>Syzygium francisii</i>	Giant Water Gum
<i>Syzygium ingens</i>	Red Apple
<i>Syzygium luehmannii</i>	Riberry
<i>Syzygium moorei</i>	Durobby
<i>Syzygium smithii</i>	Common Lilly Pilly



MAPPING

551 LEFT BANK RD, MULLUMBIMBY CREEK (NOV 2ND)



850 ACCM trees were planted among the 8,169 total trees planted at this property with 51 different species. Here we see neighbours banding together to reforest their land. Together this community has made a significant start to boosting local biodiversity, enhancing forest genetics, restoring degraded riparian zones and stabilising steep slopes.



SPECIES LIST

<i>Abrophyllum ornans</i>	Native Hydrangea
<i>Acacia disparrima ssp. disparrima</i>	Brush Ironbark Wattle
<i>Acacia melanoxyton</i>	Blackwood
<i>Acronychia oblongifolia</i>	Common Acronychia
<i>Alphitonia excelsa</i>	Red Ash
<i>Alpinia caerulea</i>	Native Ginger
<i>Aphananthe philippinensis</i>	Rough-leaved Elm
<i>Araucaria cunninghamii</i>	Hoop Pine
<i>Archontophoenix cunninghamiana</i>	Bangalow Palm
<i>Banksia integrifolia</i>	Coastal Banksia
<i>Breynia oblongifolia</i>	Breynia
<i>Castanospermum australe</i>	Black Bean
<i>Castanospira alphandii</i>	Brown Tamarind
<i>Casuarina cunninghamiana</i>	River Oak
<i>Commersonia bartramia</i>	Brown Kurrajong
<i>Crinum pedunculatum</i>	Beach Lily
<i>Cryptocarya obovata</i>	Pepperberry
<i>Diploglottis australis</i>	Native Tamarind
<i>Dysoxylum mollissimum</i>	Red Bean
<i>Ehretia acuminata var. acuminata</i>	Koda
<i>Elaeocarpus grandis</i>	Blue Quandong
<i>Elattostachys nervosa</i>	Green Tamarind
<i>Eucalyptus grandis</i>	Flooded Gum
<i>Ficus fraseri</i>	Sandpaper Fig
<i>Ficus virens</i>	White Fig
<i>Flindersia australis</i>	Teak
<i>Flindersia xanthoxyla</i>	Yellowwood
<i>Gmelina leichhardtii</i>	White Beech
<i>Hicksbeachia pinnatifolia</i>	Red Bopple Nut
<i>Lomandra hystrix</i>	Forest Mat-rush
<i>Lomandra longifolia</i>	Spiny head Mat-rush
<i>Lophostemon confertus</i>	Brush Box



SPECIES LIST cont..

Lophostemon suaveolens

Melia azedarach var. *australasica*

Pittosporum revolutum

Pittosporum undulatum

Planchonella australis

Podocarpus elatus

Rhodosphaera rhodanthema

Sarcopteryx stipata

Solanum aviculare

Syzygium corynanthum

Syzygium crebrinerve

Syzygium floribundum

Syzygium francisii

Syzygium hemilamprum

Syzygium hodgkinsoniae

Syzygium ingens

Syzygium luehmannii

Syzygium moorei

Toona ciliata

Swamp Box

White Cedar

Hairy Pittosporum

Sweet Pittosporum

Black Apple

Plum Pine

Deep Yellowwood

Steelwood

Kangaroo Apple

Sour Cherry

Purple Cherry

Weeping Lilly Pilly

Giant Water Gum

Broad-leaved Lilly Pilly

Red Lilly Pilly

Red Apple

Riberry

Durobby

Red Cedar



MAPPING

900 DOON DOON RD, DOON DOON (NOV 9TH)



This site has an incredible pocket of rainforest as well as great expanses of rolling hills that are mostly devoid of trees. There were extensive landslides in this region and on this site during the 2022 floods. We have been working with this landholder to reforest the land and regenerate the creek that passes through the property. This planting will bring significant benefits for land stabilisation, improved runoff and buffer/riparian zones and enhanced biodiversity.



SPECIES LIST

<i>Acacia disparrima ssp. disparrima</i>	Brush Ironbark Wattle
<i>Acronychia oblongifolia</i>	Common Acronychia
<i>Alocasia brisbanensis</i>	Cunjevoi Lily
<i>Alpinia caerulea</i>	Native Ginger
<i>Aphananthe philippinensis</i>	Rough-leaved Elm
<i>Atractocarpus chartaceus</i>	Narrow-leaved Gardenia
<i>Breynia oblongifolia</i>	Breynia
<i>Callicarpa pedunculata</i>	Velvet Leaf
<i>Casuarina equisetifolia ssp. incana</i>	Coastal She-Oak
<i>Commersonia bartramia</i>	Brown Kurrajong
<i>Cordyline petiolaris</i>	Broad-leaved Palm Lily
<i>Cordyline stricta</i>	Narrow-leaved Palm Lily
<i>Crinum pedunculatum</i>	Beach Lily
<i>Davidsonia jerseyana</i>	Davidson's Plum
<i>Dianella caerulea</i>	Blue Flax Lily
<i>Elaeocarpus grandis</i>	Blue Quandong
<i>Elaeocarpus reticulatus</i>	Blueberry Ash
<i>Elattostachys nervosa</i>	Green Tamarind
<i>Endiandra pubens</i>	Hairy Walnut
<i>Ficus coronata</i>	Creek Sandpaper Fig
<i>Ficus fraseri</i>	Sandpaper Fig
<i>Ficus obliqua</i>	Small-leaved Fig
<i>Flindersia schottiana</i>	Cudgerie
<i>Glochidion ferdinandi</i>	Cheese Tree
<i>Grevillea robusta</i>	Silky Oak
<i>Guioa semiglauca</i>	Guioa
<i>Homalanthus populifolius</i>	Bleeding Heart
<i>Hymenosporum flavum</i>	Native Frangipani
<i>Litsea reticulata</i>	Bolly Gum
<i>Lomandra hystrix</i>	Forest Mat-rush



SPECIES LIST cont...

Lomandra longifolia

Lophostemon confertus

Macaranga tanarius

Mallotus discolor

Melia azedarach var. *australasica*

Pittosporum undulatum

Podocarpus elatus

Solanum aviculare

Sterculia quadrifida

Syzygium floribundum

Syzygium luehmannii

Syzygium moorei

Spiny head Mat-rush

Brush Box

Macaranga

Yellow Kamala

White Cedar

Sweet Pittosporum

Plum Pine

Kangaroo Apple

Peanut Tree

Weeping Lilly Pilly

Riberry

Durobby



MAPPING

625 MYOCUM RD, MYOCUM (NOV 21ST)



751 ACCM trees were planted here. This property has some low lying, flood-prone areas, so trees that can tolerate these conditions were selected. Additionally, Myocum has a history of wet sclerophyll forests. Secondary koala food species Brush Box (*Lophostemon confertus*) were incorporated into the planting to support local koalas.



SPECIES LIST

<i>Acacia disparrima ssp. disparrima</i>	Brush Ironbark Wattle
<i>Acacia melanoxylon</i>	Blackwood
<i>Allocasuarina torulosa</i>	Forest Oak
<i>Alpinia caerulea</i>	Native Ginger
<i>Callistemon viminalis</i>	Weeping Bottlebrush
<i>Casuarina cunninghamiana</i>	River Oak
<i>Casuarina equisetifolia ssp. incana</i>	Coastal She-Oak
<i>Commersonia bartramia</i>	Brown Kurrajong
<i>Ficus macrophylla</i>	Moreton Bay Fig
<i>Glochidion ferdinandi</i>	Cheese Tree
<i>Grevillea robusta</i>	Silky Oak
<i>Guioa semiglauca</i>	Guioa
<i>Hymenosporum flavum</i>	Native Frangipani
<i>Lophostemon confertus</i>	Brush Box
<i>Lophostemon suaveolens</i>	Swamp Box
<i>Melia azedarach var. australasica</i>	White Cedar
<i>Polyscias elegans</i>	Celerywood
<i>Syzygium luehmannii</i>	Riberry
<i>Syzygium moorei</i>	Durobby



THANK YOU, ACCM!



Thank you for running a program with impact. In just two years of partnership, ACCM is responsible for the planting of around one hectare of critically endangered rainforest!
You are also supporting 55 rural jobs and counting.

We hope to continue planting for you and your students in 2024 and beyond!

If you have any further queries please contact me on

0415 134 941 or
info@reforestnow.org.au

Yours sincerely,

Maximo Bottaro - Co-Founder & CEO of ReForest Now





From your first tree planted in June 2022, thank you for your ongoing support.