
PLANTING REPORT

60 000 trees, funded May 10th 2023



*Prepared by:
Sophie Rallings*

info@reforestnow.org.au (+61)415 134 941

ReForest Now Ltd
Trading as: ReForest Now

ABN 40 887 914 802 | ACN 656 965 856

3/11 Booyun Street
Brunswick Heads NSW 2483



ReForest Now is registered as a charity with
the Australian Charities and Not-for-profits
Commission (ACNC). NSW License Number: CFN 24812.

Donations over \$2.00 are tax deductible.



We acknowledge the the Aboriginal People of the
Bundjalung Nation as the Traditional Custodians of the land
we work on and thank them for protecting ecosystems since
time immemorial.

SUMMARY OF OUTCOMES

\$300,000 donated on 10th May 2023 - 60,000 trees planted

Thanks to you SAP, another 60,000 native rainforest trees are now in the ground. They are already beginning to change the landscape they sit within. Your record donation has been utilised across 13 sites in the Northern Rivers region of NSW, Australia. We have connected more landholders with their land and with the very special - and critically endangered - Big Scrub Rainforest.

Only 1% of the Big Scrub Rainforest remains after significant land clearing in the 1800s. The last stands of this ecosystem are disjointed remnants, often separated by many kilometres that impede their natural functions and result in low genetic diversity.

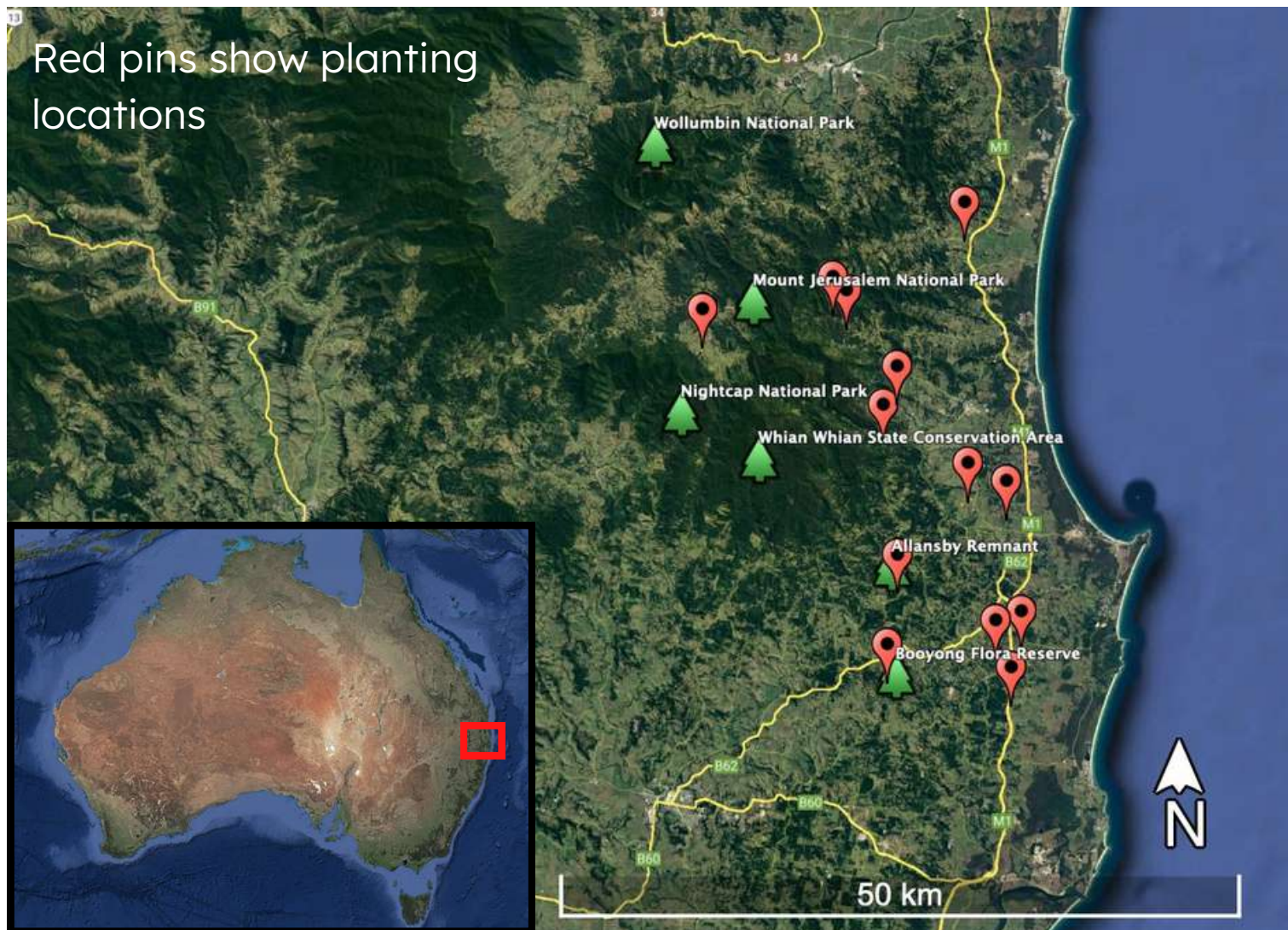
We have had the great privilege of expanding two Big Scrub Rainforest remnants with your support - Booyong Nature Reserve and the Allansby Remnant.

Repairing this ecosystem and the biodiversity that it supports is imperative to the resilience of this region and local communities.

An incredible 151 endemic species have been planted across 35 planting days. One day soon these small trees will be supplying seed to the surrounding area, giving nature more opportunity to regenerate on its own.



AREA OF IMPACT



PLANTING SUMMARY

Date	Location	SAP Trees Planted
May 23, 2023	113 Stewarts Road, Clunes, NSW	2,591
May 25, 2023	113 Stewarts Road, Clunes, NSW	3,143
May 26, 2023	113 Stewarts Road, Clunes, NSW	817
May 30, 2023	113 Stewarts Road, Clunes, NSW	2,989
June 1, 2023	113 Stewarts Road, Clunes, NSW	1,306
Jun 6, 2023	113 Stewarts Road, Clunes, NSW	1,494
Jun 8, 2023	113 Stewarts Road, Clunes, NSW	1,596
Jun 13, 2023	113 Stewarts Road, Clunes, NSW	1,061
Jun 15, 2023	1141B Main Arm Road, Upper Main Arm NSW	1,179
Aug 30, 2023	77-97 Broken Head Road, Byron Bay NSW	100
Sept 7, 2023	82/112 Broken Head Road, Newrybar NSW	1,724
Sept 12, 2023	112 Broken Head Road, Newrybar NSW	2,943
Sept 13, 2023	1297 Main Arm Rd, Upper Main Arm NSW	50
Sept 14, 2023	112 Broken Head Road, Newrybar NSW	2,673
Sept 19, 2023	112 Broken Head Road, Newrybar NSW	2,151
Sept 21, 2023	179 Old Byron Bay Rd / 644 Hinterland Way, Newrybar NSW	2,301
Sept 26, 2023	179 Old Byron Bay Rd / 644 Hinterland Way, Newrybar NSW	2,515

PLANTING SUMMARY cont..

Date	Location	SAP Trees Planted
Sept 28, 2023	179 Old Byron Bay Rd / 644 Hinterland Way, Newrybar NSW	1,640
Oct 3, 2023	112 Broken Head Road, Newrybar NSW	2,112
Oct 5, 2023	34 Brooklet Rd, Newrybar NSW	2,434
Oct 10, 2023	34 Brooklet Rd, Newrybar + 151 Federal Drive, Eureka NSW	2,400
Oct 12, 2023	149 Federal Drive, Eureka NSW	2,340
Oct 17, 2023	5824 Tweed Valley Way, Mooball NSW	2,638
Oct 19, 2023	5824 Tweed Valley Way, Mooball NSW	1,671
Oct 24, 2023	515 Left Bank Road, Mullumbimby Creek NSW	2,000
Oct 26, 2023	149 Federal Drive, Eureka NSW	2,000
Oct 31, 2023	515 Left Bank Road, Mullumbimby Creek NSW	1,000
Nov 2, 2023	515 Left Bank Road, Mullumbimby Creek NSW	1,132
Nov 17, 2023	65 Parmenters Road, Wilsons Creek NSW	1,000
Nov 21, 2023	625 Myocum Road, Myocum NSW	1,999
Nov 23, 2023	625 Myocum Road, Myocum NSW	1,001
Nov 23, 2023	Byron Bay Wildlife Sanctuary - 419 Hinterland Way, Knockrow NSW	200

PLANTING SUMMARY cont..

Date	Location	SAP Trees Planted
Nov 28, 2023	119 Watsons Lane, Newrybar NSW	1,800
Nov 30, 2023	119 Watsons Lane, Newrybar NSW	1,500
Dec 1, 2023	223 Kennedys Lane, Ewingsdale NSW	500
	TOTAL	60,000

*Additional reporting information and all contributing donors available at
reforestnow.org.au/findmytrees*

MAPPING

113 STEWARTS ROAD, CLUNES (MAY-JUNE)



We further expanded our plantings at Banyula with your donations.

On this site alone, we have planted over 260,000+ rainforest plants of 184 native species. This could be the largest and most diverse rainforest planting in Australia! Thank you for being a major part of it.



MAPPING

1141B Main Arm Road, Upper Main Arm (JUN 15)



1,179 SAP trees were planted on this passionate landholder's property on our last day of the planting season in June.



Crystalbrook Resort - 77-97 Broken Head Road, Byron Bay NSW (AUG 30)



The forest at this site is well established but, with your support, we were able to enrich it by planting 100 Birdwing Butterfly Vines and Bangalow Palms.



Kohinur Hall - 1297 Main Arm Road, Upper Main Arm NSW (SEP 12)



50 native shrubs and grasses were planted at the Kohinur Community Hall in Upper Main Arm which was badly affected in the 2022 floods.



MAPPING

NEWRYBAR - 4 SITES (SEP-NOV)



For this project, we are working with Rous County Council and four landholders who have banded together to regenerate and expand the forested areas that extend along Emigrant Creek and its surrounds.

These landholders are passionate about doing their part and acting as custodians of the land.



The existing forest here is a mixture of weeds and rainforest, but this planting will provide a reference population from which native ecosystem functions and seeds can influence the mixed forest in the surrounds.



Our bush regeneration teams moved through the adjacent mixed forest along the creek to reduce the pressure from woody weeds, such as Privet (*Ligustrum lucidum* and *Ligustrum sinense*) and Camphor laurel (*Cinnamomum camphora*), on the newly planted areas. Our maintenance teams return to our sites regularly to keep grass and weed pressure low on our planted trees.



MAPPING

34 BROOKLET ROAD, NEWRYBAR (OCT 5+10TH)



Our team has planted 3,171 SAP trees at this property - expanding the forested areas onsite.



MAPPING

149 FEDERAL DRIVE, EUREKA (OCT 2023)



This property is home to the Allansby Remnant - one of the last remaining stands of the Big Scrub Rainforest. Our bush regeneration team is currently working to remove invasive species pressure within the remnant. In October, we planted over 4,000 trees where part of a nearby macadamia orchard was removed to make way for ecological restoration.

We have done extensive plantings around this property since April 2021 - including SAP's very first trees! This more recent planting will provide a "stepping stone" area of forest for wildlife and plant species, which have been confined to the remnant.



MAPPING

5824 TWEED VALLEY WAY, MOOBALL (OCT 17+19TH)



4,309 trees were planted at this property with a total of 39 species. This area has faced significant clearing, and is still surrounded by agricultural land, however, it is wonderful to see committed landholders making the change and returning their land to forest.



MAPPING

515 LEFT BANK ROAD, MULLUMBIMBY CREEK (OCT+NOV)



Volunteer day!

SAP[®]

8,169 trees were planted at this property with a total of 59 species. This site again sees neighbours banding together to reforest their land. Together this community has made a significant start to boosting local biodiversity, enhancing forest genetics, restoring degraded riparian zones and stabilising steep slopes.

We were so thrilled to have you volunteer with us at this site. Thank you for sharing the day with us, it was a pleasure to connect face-to-face!



MAPPING

65 PARMENTERS ROAD, WILSONS CREEK (NOV 17TH)



There were 36 species and 1,000 SAP trees planted here which will assist in returning cleared land to subtropical rainforest. Several gaps were filled on this property between existing rainforest. To plant in between regenerating areas is a normal part of rainforest regeneration.



MAPPING

625 MYOCUM ROAD, MYOCUM (NOV 21+23)



3,000 SAP trees were planted here. This property has some low lying, flood-prone areas, so trees that can tolerate these conditions were selected. Additionally, Myocum has historically boasted large populations of koalas and wet sclerophyll forests. Secondary koala food species *Lophostemon confertus* Brush Box was incorporated into the planting to support local koalas.



MAPPING

BYRON BAY WILDLIFE SANCTUARY - 419 HINTERLAND WAY, KNOCKCROW (NOV 24)



200 SAP trees were planted at the Byron Bay Wildlife Sanctuary. A cleared area amongst the existing forest was filled with 30 different species.



MAPPING

223 KENNEDYS LANE, EWINGSDALE (DEC 1ST)



500 SAP trees were planted at this property.

Our bush regeneration teams moved through this property before the planting occurred to reduce the weed pressure on the forest and to help to minimise weed invasion into the planting.

A cleared area amongst the existing forest as well as areas under canopy were filled with 27 different species, including those that need more shade and are not as suitable for open-paddock planting.



SPECIES LIST

A total of 151 species were planted across 35 days.

VU - Vulnerable
EN - Endangered

<i>Abrophyllum ornans</i>	Native Hydrangea
<i>Acacia disparrima ssp. disparrima</i>	Brush Ironbark Wattle VU
<i>Acacia floribunda</i>	White Sally
<i>Acacia maidenii</i>	Maiden's Wattle
<i>Acacia melanoxylon</i>	Blackwood
<i>Acronychia laevis</i>	Glossy Acronychia
<i>Acronychia oblongifolia</i>	Common Acronychia
<i>Acronychia pubescens</i>	Hairy Acronychia
<i>Alchornea ilicifolia</i>	Native Holly
<i>Alectryon coriaceus</i>	Beach Alectryon
<i>Allocasuarina littoralis</i>	Black Oak
<i>Allocasuarina torulosa</i>	Forest Oak
<i>Alocasia brisbanensis</i>	Cunjevoi Lily
<i>Alphitonia excelsa</i>	Red Ash
<i>Alphitonia petriei</i>	Pink Ash
<i>Alpinia caerulea</i>	Native Ginger
<i>Aphananthe philippinensis</i>	Rough-leaved Elm
<i>Araucaria cunninghamii</i>	Hoop Pine
<i>Archidendron grandiflorum</i>	Pink Laceflower
<i>Archontophoenix cunninghamiana</i>	Bangalow Palm
<i>Arytera distylis</i>	Twin-leaved Coogera
<i>Atractocarpus chartaceus</i>	Narrow-leaved Gardenia
<i>Auranticarpa rhombifolia</i>	Hollywood
<i>Austromyrtus dulcis</i>	Midgen Berry
<i>Backhousia myrtifolia</i>	Cinnamon Myrtle
<i>Baloghia inophylla</i>	Brush Bloodwood
<i>Banksia integrifolia</i>	Coastal Banksia
<i>Brachychiton acerifolius</i>	Flame Tree
<i>Brachychiton discolor</i>	Lacebark Tree
<i>Breynia oblongifolia</i>	Breynia

SPECIES LIST cont..

<i>Callicarpa pedunculata</i>	Velvet Leaf
<i>Callicoma serratifolia</i>	Black Wattle
<i>Callistemon salignus</i>	Pink Bottlebrush
<i>Callistemon viminalis</i>	Weeping Bottlebrush
<i>Castanospermum australe</i>	Black Bean
<i>Castanospira alphanthii</i>	Brown Tamarind
<i>Casuarina cunninghamiana</i>	River Oak
<i>Casuarina equisetifolia ssp. incana</i>	Coastal She-Oak
<i>Cinnamomum oliveri</i>	Oliver's Sassafras
<i>Commersonia bartramia</i>	Brown Kurrajong
<i>Cordyline petiolaris</i>	Broad-leaved Palm Lily
<i>Cordyline stricta</i>	Narrow-leaved Palm Lily
<i>Crinum pedunculatum</i>	Beach Lily
<i>Cryptocarya laevigata</i>	Glossy Laurel
<i>Cryptocarya obovata</i>	Pepperberry
<i>Cryptocarya rigida</i>	Forest Maple
<i>Cryptocarya triplinervis</i>	Three-veined Laurel
<i>Cupaniopsis anacardioides</i>	Tuckeroo
<i>Cupaniopsis newmanii</i>	Long-leaved Tuckeroo
<i>Davidsonia jerseyana</i>	Davidson's Plum EN
<i>Dendrocnide excelsa</i>	Giant Stinging Tree
<i>Dianella caerulea</i>	Blue Flax Lily
<i>Diospyros australis</i>	Black Plum
<i>Diospyros pentamera</i>	Myrtle Ebony
<i>Diploglottis australis</i>	Native Tamarind
<i>Diploglottis campbellii</i>	Small-leaved Tamarind EN
<i>Doryphora sassafras</i>	Sassafras
<i>Drymophila moorei</i>	Orange Berry
<i>Duboisia myoporoides</i>	Corkwood
<i>Dysoxylum fraserianum</i>	Rosewood
<i>Dysoxylum mollissimum</i>	Red Bean
<i>Dysoxylum rufum</i>	Hairy Rosewood

SPECIES LIST cont...

<i>Ehretia acuminata</i> var. <i>acuminata</i>	Koda
<i>Elaeocarpus grandis</i>	Blue Quandong
<i>Elaeocarpus obovatus</i>	Hard Quandong
<i>Elaeocarpus reticulatus</i>	Blueberry Ash
<i>Elattostachys nervosa</i>	Green Tamarind
<i>Endiandra pubens</i>	Hairy Walnut
<i>Eucalyptus grandis</i>	Flooded Gum
<i>Eucalyptus microcorys</i>	Tallowwood
<i>Eucalyptus tereticornis</i>	Forest Red Gum
<i>Ficus coronata</i>	Creek Sandpaper Fig
<i>Ficus fraseri</i>	Sandpaper Fig
<i>Ficus henneana</i>	Deciduous Fig
<i>Ficus macrophylla</i>	Moreton Bay Fig
<i>Ficus obliqua</i>	Small-leaved Fig
<i>Ficus rubiginosa</i>	Rusty Fig
<i>Ficus virens</i>	White Fig
<i>Ficus watkinsiana</i>	Strangler Fig
<i>Flindersia australis</i>	Teak
<i>Flindersia bennettiana</i>	Bennetts Ash
<i>Flindersia schottiana</i>	Cudgerie
<i>Flindersia xanthoxyla</i>	Yellowwood
<i>Gahnia clarkei</i>	Tall Saw-sedge
<i>Glochidion ferdinandi</i>	Cheese Tree
<i>Glochidion sumatranum</i>	Umbrella Cheese Tree
<i>Gmelina leichhardtii</i>	White Beech
<i>Grevillea hilliana</i>	White Yiel Yiel EN
<i>Grevillea robusta</i>	Silky Oak
<i>Guioa semiglauca</i>	Guioa
<i>Harpullia pendula</i>	Tulipwood
<i>Hibiscus heterophyllus</i>	Native Rosella
<i>Hicksbeachia pinnatifolia</i>	Red Bopple Nut VU
<i>Homalanthus populifolius</i>	Bleeding Heart

SPECIES LIST cont...

<i>Hovea acutifolia</i>	Purple Pea
<i>Huberantha nitidissima</i>	Shiny-leaf Tree
<i>Hymenosporum flavum</i>	Native Frangipani
<i>Jagera pseudorhus</i> var. <i>pseudorhus</i>	Foambark Tree
<i>Karrabina benthamiana</i>	Red Carabeen
<i>Lepiderema pulchella</i>	Fine-leaved Tuckeroo
<i>Litsea reticulata</i>	Bolly Gum
<i>Livistona australis</i>	Cabbage Tree Palm
<i>Lomandra hystrix</i>	Forest Mat-rush
<i>Lomandra longifolia</i>	Spiny head Mat-rush
<i>Lophostemon confertus</i>	Brush Box
<i>Lophostemon suaveolens</i>	Swamp Box
<i>Macaranga tanarius</i>	Macaranga
<i>Mallotus discolor</i>	Yellow Kamala
<i>Mallotus philippensis</i>	Red Kamala
<i>Melaleuca bracteata</i>	Black Tea Tree
<i>Melaleuca quinquenervia</i>	Broad-leaf Paperbark
<i>Melia azedarach</i> var. <i>australasica</i>	White Cedar
<i>Melicope elleryana</i>	Pink Euodia
<i>Myrsine howittiana</i>	Brush Muttonwood
<i>Myrsine variabilis</i>	Muttonwood
<i>Neolitsea dealbata</i>	Hairy-leaved Bolly Gum
<i>Pararchidendron pruinsum</i>	Snow wood
<i>Pararistolochia praevenosa</i>	Birdwing Butterfly Vine
<i>Petalostigma triculare</i>	Long-leaved Bitterbark
<i>Pipturus argenteus</i>	Native Mulberry
<i>Pittosporum revolutum</i>	Hairy Pittosporum
<i>Pittosporum undulatum</i>	Sweet Pittosporum
<i>Planchonella australis</i>	Black Apple
<i>Podocarpus elatus</i>	Plum Pine
<i>Polyosma cunninghamii</i>	Featherwood
<i>Polyscias elegans</i>	Celerywood

SPECIES LIST cont...

<i>Psychotria daphnoides</i>	Smooth Psychotria
<i>Psychotria loniceroides</i>	Hairy Psychotria
<i>Rhodosphaera rhodanthema</i>	Deep Yellowwood
<i>Sarcopteryx stipata</i>	Steelwood
<i>Sloanea australis</i>	Maiden's Blush
<i>Solanum aviculare</i>	Kangaroo Apple
<i>Stenocarpus sinuatus</i>	Firewheel Tree
<i>Sterculia quadrifida</i>	Peanut Tree
<i>Syncarpia glomulifera</i>	Turpentine
<i>Synoum glandulosum</i>	Scentless Rosewood
<i>Syzygium corynanthum</i>	Sour Cherry
<i>Syzygium crebrinerve</i>	Purple Cherry
<i>Syzygium floribundum</i>	Weeping Lilly Pilly
<i>Syzygium francisii</i>	Giant Water Gum
<i>Syzygium hemilamprum</i>	Broad-leaved Lilly Pilly
<i>Syzygium hodgkinsoniae</i>	Red Lilly Pilly
<i>Syzygium ingens</i>	Red Apple
<i>Syzygium luehmannii</i>	Riberry
<i>Syzygium moorei</i>	Durobby VU
<i>Syzygium oleosum</i>	Blue Lilly Pilly
<i>Syzygium smithii</i>	Common Lilly Pilly
<i>Toona ciliata</i>	Red Cedar
<i>Trema tomentosa</i> var. <i>aspera</i>	Native Peach
<i>Trema tomentosa</i> var. <i>viridis</i>	Poison Peach
<i>Tristaniopsis laurina</i>	Water Gum

THANK YOU, SAP

Thank you again Cathrin and team for supporting RN.

I believe in RN's team, I am humbled by the hard work they do, and by the great results we are seeing.

The potency of SAP's support here in the Byron Shire is regionally significant. You are changing our landscape for the better. I believe your choice to support us is well placed, evidenced by the fact our federal government has put in place the highest protection for the forests we plant. They are listed as **Critically Endangered Subtropical Lowland Rainforest**.

The high biodiversity utilised also means that far into the future, your forests will have the structural features of high value rainforest, even though they were human made.

The work you do here is safe, it will expand, it will seed and create more rainforests. This is a winning battle in a world with far more complicated reforestation challenges elsewhere. We at least know that here we can realise a win for the Earth where the rules are in her favour.

To have you at our side is a tremendous boon. We couldn't be more grateful to have you lend your strength to ours. Growing a reforestation charity is a constant hustle of proving the value of what you do, as there is no product to sell to another person. Thank you for valuing what we do and supporting us every year.

Thank you again for joining us on October 31st. I hope you will be able to return another time to see more of your sites - there's something so special about seeing the trees you planted grow!

Warm regards,
Maximo

Yours sincerely,



Maximo Bottaro - Co-Founder & CEO of ReForest Now





**From your first tree planted on April 21, 2021
~ Thank you for the years of support.**

