

PLANTING REPORT

\$27,655 donated - 22nd June 2023
- 5,531 trees planted



**SYDNEY
WORLDPRIDE
2023**

*Prepared by:
Maximo Bottaro*

info@reforestnow.org.au

(+61)415 134 941

ReForest Now Ltd
Trading as: ReForest Now

ABN 40 887 914 802 | ACN 656 965 856

3/11 Booyun Street
Brunswick Heads NSW 2483



ReForest Now is registered as a charity with the Australian Charities and Not-for-profits Commission (ACNC). NSW License Number: CFN 24812.

Donations over \$2.00 are tax deductible.



We acknowledge the the Aboriginal People of the Bundjalung Nation as the Traditional Custodians of the land we work on and thank them for protecting ecosystems since time immemorial.

SUMMARY OF OUTCOMES

\$27,655 donated on 22nd June 2023 - 5,531 trees planted

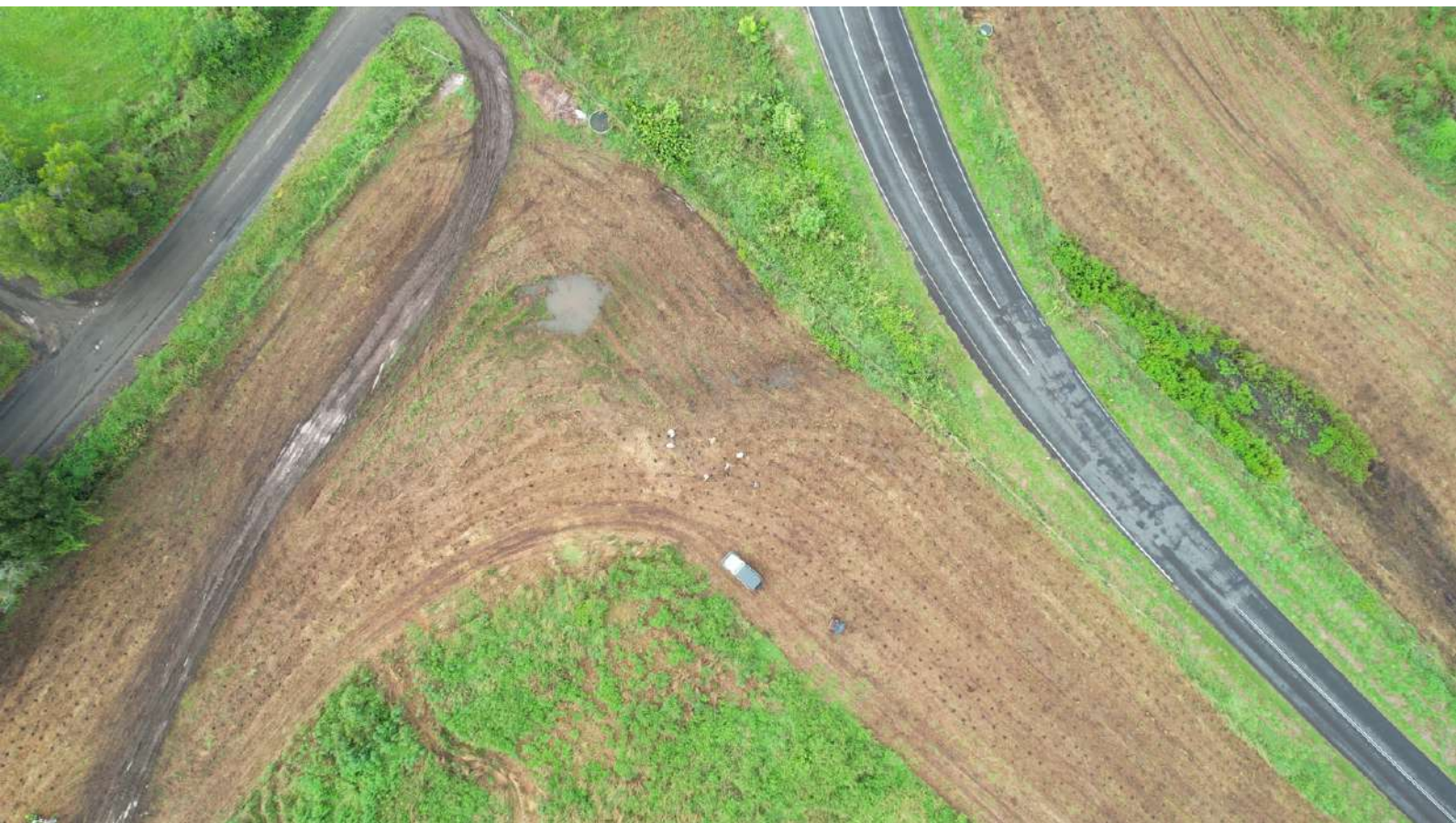
Thank you so much for coming on as new donors. We completed four plantings of which your donation contributed, which we will explore in this report. You also have permanent access to all the photos, gps outlines, species lists, dates, addresses and more at <https://www.reforestnow.org.au/findmytrees>

Site details for each location, including some handpicked photography will be shown. Your donation covers 5,531 rainforest trees that have been planted. These were all done at industry leading levels of care and will receive 3 years maintenance. The service includes; site preparation, augered 400mm holes, 600ml wet water crystal per hole, hand planting of a 50mm forestry tube rainforest tree of high diversity, top dressing with fertiliser and 3 years of re-ferting and weed removal. After which time, your forest will be formidable and require no more support. **maintenance costs are covered by the landholder**



PLANTING SUMMARY

Date	Location	Trees Planted
December 22nd 2023	42 Ti Tree Rd, Byron Bay NSW	33
March 14th 2024	35 Blackbean Road, Wilsons Creek NSW	1,369
March 18th 2024	100 Possum Creek Rd, Possum Creek	573
March 22nd 2024	15 Crofton Road, Nimbin NSW	3,556
	TOTAL	5,531



Aerial view of one of your below plantings!

Additional reporting information and all contributing donors available at reforestnow.org.au/findmytrees

MAPPING

42 Ti Tree Rd, Byron Bay NSW (22nd Dec 23)



This property adjoins an enormous natural area to the north known as the Cumbebin Swamp. This natural area goes right up against the commercial district at main beach Byron Bay and contains a hand full of locally endemic endangered flora and fauna.

As it heads south towards your planting site, there is a little rainforest where the landscape turns suddenly into paddock land.

We have been able to work with a landholder here that is tucked into that bit of forest to add in rainforest species. This will encourage their spread south into open paddocks.



This was a smaller planting, so only a handful were needed from your event.

Here staff can be seen reclaiming paddock and directly expanding a rainforest planting from perhaps 7 years ago.

MAPPING

35 Blackbean Road, Wilsons Creek NSW (March 14th 24)



Your second site is in Wilsons Creek, a wonderful place. It is one of last big strongholds of rainforests on the east side Whian Whian State Conservation Area and Goonengerry National Park facing the ocean.

In the image left, you can see a big wide, clear blue river. This is the Wilsons and one can still drink from it! It is so robust and still supports wonderous life forms such as goliath stick insects, regent/satinash bowerbirds, mintor lizards and rare rainforest owls.

The landholder suffered a landslip during our historical flood event and decided to reforest the cleared area, making good out of a bad situation.



MAPPING

100 Possum Creek Rd, Possum Creek (Mar 18th 24)



Here at your third site we focused on rehabilitating spring fed dams and building up along existing rainforest trees that can be seen below.

These dams are critically important to sustain our migratory bird populations that make extensive use of them, but many dams are falling into disrepair. Reforesting their edges means we can increase their water storing capacity year round.

We also planted a wind break of rainforest trees to protect from extreme weather and retain moisture.





In the left image we see a natural area that could retain several times it's current volume of water when reforested.

Below you can see the massive scale of the second dam. Dozens of migratory bird species drop by dams like this in Byron Bay each year to drink and rest.

We have planted many species of fruiting trees to feed them on their journeys.



MAPPING

15 Crofton Road, Nimbin NSW (Mar 22nd 24)



The owner of this property is well known environmental activist in protection of endangered species and decided to take on their own block, which is also a chemical free farm producing food.

Extensive long corridors connecting vegetation have been created. While these appear narrow in the aerial image, please refer to the photo below and on the Planting Summary page to see the scale of these corridors.

*This is all it takes to create a place for wildlife to gain access to more habitat/food sources/water sources.
A corridor of about 20 trees wide.*





SPECIES LIST -

53 species over 6 days planting

VU - Vulnerable
EN - Endangered

Acacia disparrima ssp. disparrima	Brush Ironbark Wattle
Acacia melanoxylon	Blackwood
Acronychia oblongifolia	Common Acronychia
Alchornea ilicifolia	Native Holly
Alphitonia excelsa	Red Ash
Alphitonia petriei	Pink Ash
Alpinia caerulea	Native Ginger
Banksia integrifolia	Coastal Banksia
Brachychiton acerifolius	Flame Tree
Castanospermum australe	Black Bean
Castanospora alphandii	Brown Tamarind
Casuarina cunninghamiana	River Oak
Commersonia bartramia	Brown Kurrajong
Cordyline petiolaris	Broad-leaved Palm Lily
Cordyline stricta	Narrow-leaved Palm Lily
Cryptocarya obovata	Pepperberry
Cryptocarya triplinervis	Three Veined Laurel
Dianella caerulea	Blue Flax Lily
Elaeocarpus grandis	Blue Quandong
Elaeocarpus reticulatus	Blueberry Ash
Ficus fraseri	Sandpaper Fig
Ficus macrophylla	Moreton Bay Fig
Ficus virens	White Fig
Flindersia australis	Teak
Grevillea robusta	Silky Oak



SPECIES LIST cont...

<i>Guioa semiglauca</i>	Guioa
<i>Harpullia pendula</i>	Tulipwood
<i>Homalanthus populifolius</i>	Bleeding Heart
<i>Hymenosporum flavum</i>	Native Frangipani
<i>Jagera pseudorhus</i> var. <i>pseudorhus</i>	Foambark Tree
<i>Lepiderema pulchella</i>	Fine-leaved Tuckeroo
<i>Lomandra hystrix</i>	Forest Mat-rush
<i>Lophostemon confertus</i>	Brush Box
<i>Lophostemon suaveolens</i>	Swamp Box
<i>Macaranga tanarius</i>	Macaranga
<i>Mallotus philippensis</i>	Red Kamala
<i>Melia azedarach</i> var. <i>australasica</i>	White Cedar
<i>Polyscias elegans</i>	Celerywood
<i>Polyscias murrayi</i>	Pencil Cedar
<i>Psychotria loniceroides</i>	Hairy Psychotria
<i>Rhodosphaera rhodanthema</i>	Deep Yellowwood
<i>Stenocarpus sinuatus</i>	Firewheel Tree
<i>Sterculia quadrifida</i>	Peanut Tree
<i>Syzygium floribundum</i>	Weeping Lilly Pilly
<i>Syzygium francisii</i>	Giant Water Gum
<i>Syzygium hemilamprum</i>	Broad-leaved Lilly Pilly
<i>Syzygium ingens</i>	Red Apple
<i>Syzygium luehmannii</i>	Riberry
<i>Syzygium moorei</i>	Durobby
<i>Syzygium smithii</i>	Common Lilly Pilly
<i>Toona ciliata</i>	Red Cedar
<i>Trema tomentosa</i> var. <i>aspera</i>	Native Peach
<i>Tristaniopsis laurina</i>	Water Gum

THANK YOU

Thank you

It is much appreciated that you produced such a generous donation from your event. As you can see above, your work focused on restoring water courses, spring fed dams and nature corridors.

RN plants critically endangered subtropical lowland rainforest and as such together with partners like you, we are investing in regrowth of ecosystems that will not again be cleared while federal conservation EPBC laws are in place. This is not likely to change.

As such, there is no foreseeable future where the beauty of what you've done with us, can be undone. Thank you for making these places more beautiful.

Warm regards, Maximo

If you have any further queries please contact me on

+61 415 134 941

or

info@reforestnow.org.au

Yours sincerely,



Maximo Bottaro - Co-Founder & CEO of ReForest Now





Thank you for supporting us with your event!



**SYDNEY
WORLDPRIDE
2023**