



ReForest Now

Growing Rainforest Together

**SUMMARY
REPORT**

THE COLIN JAMES
METHOD[®]

*Prepared by :
Sophie Rallings
Kallen Marecic*

info@reforestnow.org.au

(+61)415 134 941

ReForest Now Ltd
Trading as: ReForest Now

ABN 40 887 914 802 | ACN 656 965 856

3/11 Booyun Street
Brunswick Heads NSW 2483



ReForest Now is registered as a charity with the Australian Charities and Not-for-profits Commission (ACNC). NSW License Number: CFN 24812.

Donations over \$2.00 are tax deductible.



We acknowledge the the Aboriginal People of the Bundjalung Nation as the Traditional Custodians of the land we work on and thank them for protecting ecosystems since time immemorial.

BRINGING BACK THE BIG SCRUB RAINFOREST

The Big Scrub rainforest is home to an incredible array of life created from the rich volcanic soils of Wollumbin (Mt Warning). The unbroken forest once covered 75,000 hectares of Northern NSW (an area larger than Singapore!) and was thick with trees, shrubs, ferns and vines.

Tragically, 99.6% of this unique ecosystem has been lost due to logging and land clearing. By 1900 all that remained was less than 33 small, scattered patches called "remnants" (see bottom image). By the beginning of the 1990s most of the remnants were degrading under the impact of introduced and highly invasive weeds. As a result, many rare and endangered species are on the brink of extinction. We have a lot to save and a lot of damage to repair.

Together we are starting to undo the intensive and widespread clearing of early settlers in Australia. We're fighting against the ecological and climate crises.

Our mission is not just to discuss our dreams of seeing the rainforest restored, but rather to get out there, rapidly achieve outcomes of high ecological value, and report back to the people who made it happen - YOU!



SUMMARY OF OUTCOMES

\$10,626.00 donated ~ 2,071 rainforest trees

With the generous and ongoing support of *The Colin James Method*, the RN team has so far planted 1,110 (of 2,071 total) trees across 11 planting days in 2022-23. On these days, we used a total of 123 native species. An incredible amount of diversity and something we are very proud to share with you.

Your trees have been planted over five sites in former Big Scrub territory, including at a site that is adjacent to one of the few remaining remnants - Booyong Nature Reserve (*site #1 on next page*). This preserved remnant is lush rainforest under a dense canopy, named for its impressive stands of majestic Booyong trees.

It is home to many threatened species of flora and fauna.

At all sites we have seen the coming together of neighbours and the collaboration of several organisations (and donors such as yourself) to create significant outcomes for nature.

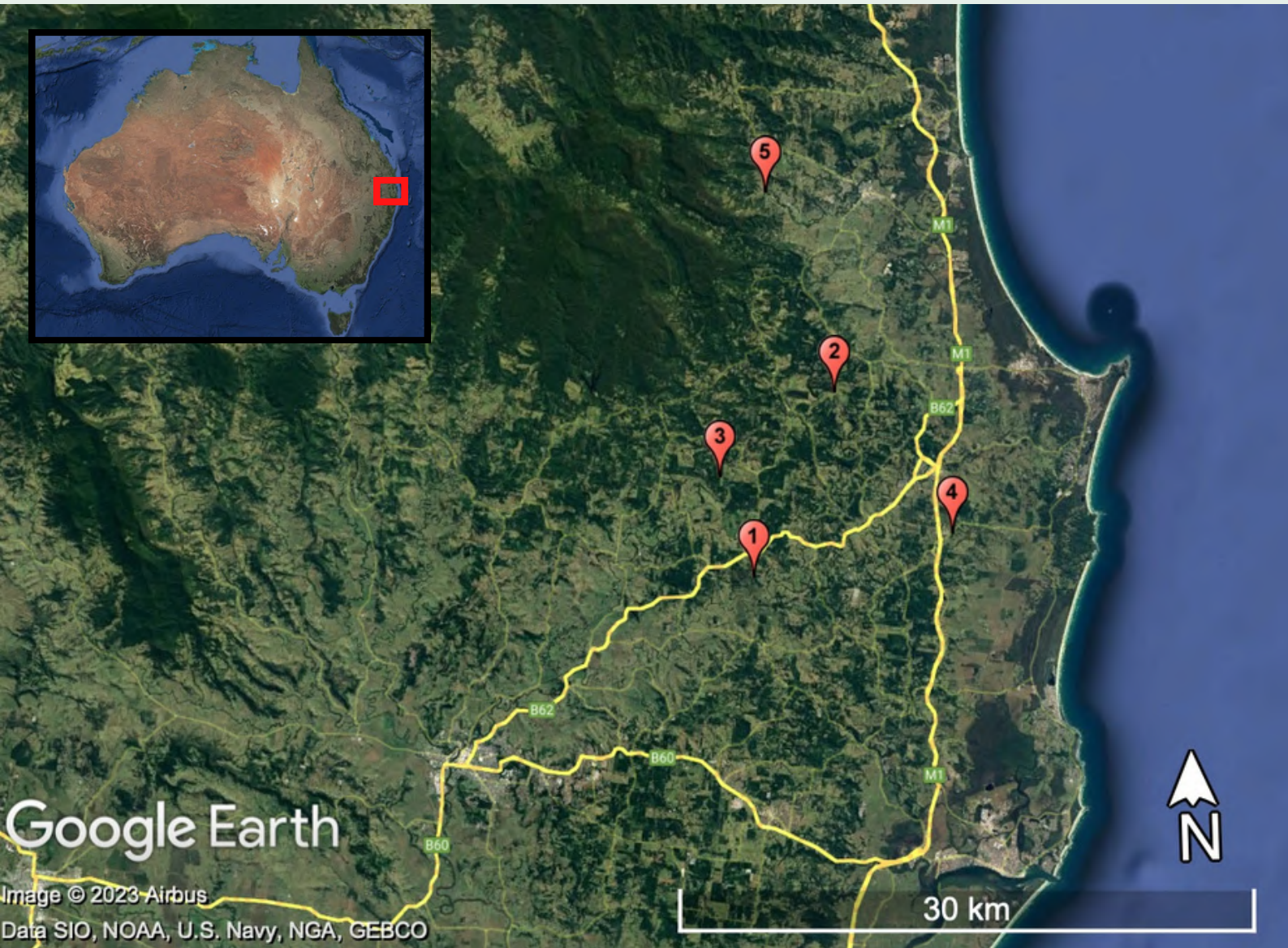
We are very grateful to have your ongoing support so that we can continue to do the work on the ground.

2024 will bring the planting of your remaining 961 trees and we hope that there are many more to come. Our world desperately needs carers and regenerators.



AREA OF IMPACT

Far North Coast region of NSW.
Once home to Australia's largest extent of subtropical rainforest.



PLANTING SUMMARY

Site #	Donation Date	Planting Date	Location	Number of CJM trees planted
1	Jul 27, 2022	Nov 3, 2022	113 Stewarts Rd, Clunes NSW	78
1	Aug 11, 2022	Nov 29, 2022	113 Stewarts Rd, Clunes NSW	299
1	Sept 27, 2022	Dec 15, 2022	113 Stewarts Rd, Clunes NSW	46
1	Oct 25, 2022	Feb 7, 2023	113 Stewarts Rd, Clunes NSW	85
2	Nov 28, 2022	Mar 7, 2023	217 Coorabell Rd, Coorabell NSW	115
1	Dec 7, 2022	Mar 14, 2023	113 Stewarts Rd, Clunes NSW	169
3	Jan 25, 2023	Apr 20, 2023	356 Ridgewood Rd, Rosebank NSW	55
1	Mar 13, 2023	May 26, 2023	113 Stewarts Rd, Clunes NSW	88
1	Apr 14, 2023	Jun 8, 2023	113 Stewarts Rd, Clunes NSW	77
4	May 12, 2023	Sept 7, 2023	82/112 Broken Head Road, Byron Bay NSW	52
5	Jun 6, 2023	Oct 24, 2023	515 Left Bank Road, Mullumbimby Creek NSW	46
	Jul 4, 2023	To be planted in 2024		77
	Aug 7, 2023			342
	Oct 3, 2023			250
	Oct 31, 2023			75
	Dec 15, 2023			217
	TOTAL			

SITE 1

BANYULA ~ 113 STEWARDS RD, CLUNES NSW



842 of your trees contributed to the very special *Banyula* project. On this site alone, we have planted over 260,000 rainforest plants of 184 native species. This could be the largest and most diverse rainforest plantings in Australia! Thank you for being a part of it.



SITE 2

217 COORABELL RD, COORABELL (MAR 7TH)



115 CJM trees were planted here as part of a planting of 1,680 trees and a larger regeneration project spanning several properties along the Wilsons River in Coorabell.



SITE 3

356 RIDGEWOOD RD, ROSEBANK (APR 20TH)



Our team planted 4,000 trees on this day, including 55 for CJM. The area planted is a steep slope amongst established Cudgerie trees. This planting will assist in stabilising this slope, boosting biodiversity and soil biology and expanding habitat for local fauna.



SITE 4

82/112 BROKEN HEAD RD, NEWRYBAR (SEPT 7TH)



On this site we are working with Rous County Council and four landholders who have banded together to regenerate and expand the forested areas along Emigrant Creek and its surrounds. These landholders are passionate about doing their part and acting as custodians of the land.



SITE 5

515 LEFT BANK RD, MULLUMBIMBY CREEK (OCT 24TH)



46 CJM trees were planted among the 8,169 total trees planted here. This site again sees neighbours banding together to return their land to rainforest. This community has made a significant effort to boost local biodiversity, enhance forest genetics, restore degraded riparian zones and stabilise steep slopes. Together we can bring this ecosystem back!



SPECIES LIST

A total of 123 species were utilised across the 11 days of planting. Given that we are restoring a critically endangered ecosystem, it is unsurprising that some of these species are threatened and/or support a threatened species.

<i>Abrophyllum ornans</i>	Native Hydrangea
<i>Acacia disparrima ssp. disparrima</i>	Brush Ironbark Wattle
<i>Acacia floribunda</i>	White Sally
<i>Acacia maidenii</i>	Maiden's Wattle
<i>Acacia melanoxylon</i>	Blackwood
<i>Acacia melanoxylon</i>	Blackwood
<i>Acronychia laevis</i>	Glossy Acronychia
<i>Alchornea ilicifolia</i>	Native Holly
<i>Alectryon coriaceus</i>	Beach Alectryon
<i>Allocasuarina littoralis</i>	Black Oak
<i>Allocasuarina torulosa</i>	Forest Oak
<i>Alphitonia excelsa</i>	Red Ash
<i>Alphitonia petriei</i>	Pink Ash
<i>Alpinia caerulea</i>	Native Ginger
<i>Aphananthe philippinensis</i>	Rough-leaved Elm
<i>Araucaria cunninghamii</i>	Hoop Pine
<i>Archontophoenix cunninghamiana</i>	Bangalow Palm
<i>Atractocarpus chartaceus</i>	Narrow-leaved Gardenia
<i>Auranticarpa rhombifolia</i>	Hollywood
<i>Austromyrtus dulcis</i>	Midgen Berry
<i>Backhousia myrtifolia</i>	Cinnamon Myrtle
<i>Banksia integrifolia</i>	Coastal Banksia
<i>Beilschmiedia obtusifolia</i>	Blush Walnut
<i>Brachychiton acerifolius</i>	Flame Tree
<i>Breynia oblongifolia</i>	Breynia
<i>Callicarpa pedunculata</i>	Velvet Leaf
<i>Callicoma serratifolia</i>	Black Wattle
<i>Callistemon viminalis</i>	Weeping Bottlebrush
<i>Castanospermum australe</i>	Black Bean
<i>Castanospira alphandii</i>	Brown Tamarind



SPECIES LIST cont..

<i>Casuarina cunninghamiana</i>	River Oak
<i>Commersonia bartramia</i>	Brown Kurrajong
<i>Cordyline petiolaris</i>	Broad-leaved Palm Lily
<i>Cordyline stricta</i>	Narrow-leaved Palm Lily
<i>Crinum pedunculatum</i>	Beach Lily
<i>Cryptocarya laevigata</i>	Glossy Laurel
<i>Cryptocarya obovata</i>	Pepperberry
<i>Cryptocarya triplinervis</i> var. <i>pubens</i>	Hairy Three-veined laurel
<i>Dianella caerulea</i>	Blue Flax Lily
<i>Dianella caerulea</i>	Blue Flax Lily
<i>Dianella longifolia</i>	Flax Lily
<i>Diospyros pentamera</i>	Myrtle Ebony
<i>Diploglottis australis</i>	Native Tamarind
<i>Diploglottis campbellii</i>	Small-leaved Tamarind
<i>Duboisia myoporoides</i>	Corkwood
<i>Dysoxylum fraserianum</i>	Rosewood
<i>Dysoxylum mollissimum</i>	Red Bean
<i>Ehretia acuminata</i> var. <i>acuminata</i>	Koda
<i>Elaeocarpus grandis</i>	Blue Quandong
<i>Elaeocarpus reticulatus</i>	Blueberry Ash
<i>Elattostachys nervosa</i>	Green Tamarind
<i>Eucalyptus grandis</i>	Flooded Gum
<i>Eucalyptus microcorys</i>	Tallowwood
<i>Ficus coronata</i>	Creek Sandpaper Fig
<i>Ficus fraseri</i>	Sandpaper Fig
<i>Ficus henneana</i>	Deciduous Fig
<i>Ficus macrophylla</i>	Moreton Bay Fig
<i>Ficus obliqua</i>	Small-leaved Fig
<i>Ficus rubiginosa</i>	Rusty Fig
<i>Ficus virens</i>	White Fig
<i>Flindersia australis</i>	Teak
<i>Flindersia bennettiana</i>	Bennetts Ash

SPECIES LIST cont...

<i>Flindersia schottiana</i>	Cudgerie
<i>Gahnia clarkei</i>	Tall Saw-sedge
<i>Glochidion ferdinandi</i>	Cheese Tree
<i>Glochidion sumatranum</i>	Umbrella Cheese Tree
<i>Gmelina leichhardtii</i>	White Beech
<i>Grevillea robusta</i>	Silky Oak
<i>Guioa semiglauca</i>	Guioa
<i>Harpullia pendula</i>	Tulipwood
<i>Hibiscus heterophyllus</i>	Native Rosella
<i>Homalanthus populifolius</i>	Bleeding Heart
<i>Hovea acutifolia</i>	Purple Pea
<i>Hymenosporum flavum</i>	Native Frangipani
<i>Jagera pseudorhus</i> var. <i>pseudorhus</i>	Foambark Tree
<i>Karrabina benthamiana</i>	Red Carabeen
<i>Lepiderema pulchella</i>	Fine-leaved Tuckeroo
<i>Leptospermum petersonii</i>	Lemon-scented Teatree
<i>Leptospermum polygalifolium</i>	Jelly Bush
<i>Litsea reticulata</i>	Bolly Gum
<i>Livistona australis</i>	Cabbage Tree Palm
<i>Lomandra hystrix</i>	Forest Mat-rush
<i>Lomandra longifolia</i>	Spiny head Mat-rush
<i>Lophostemon confertus</i>	Brush Box
<i>Lophostemon suaveolens</i>	Swamp Box
<i>Macaranga tanarius</i>	Macaranga
<i>Mallotus discolor</i>	Yellow Kamala
<i>Mallotus philippensis</i>	Red Kamala
<i>Melaleuca bracteata</i>	Black Tea Tree
<i>Melaleuca quinquenervia</i>	Broad-leaf Paperbark
<i>Melia azedarach</i> var. <i>australasica</i>	White Cedar
<i>Melicope elleryana</i>	Pink Euodia
<i>Myrsine howittiana</i>	Brush Muttonwood
<i>Neolitsea dealbata</i>	Hairy-leaved Bolly Gum



SPECIES LIST cont...

<i>Notelaea longifolia</i>	Mock Olive
<i>Pararchidendron pruinatum</i>	Snow wood
<i>Pararistolochia praevenosa</i>	Birdwing Butterfly Vine
<i>Pittosporum revolutum</i>	Hairy Pittosporum
<i>Pittosporum undulatum</i>	Sweet Pittosporum
<i>Planchonella chartacea</i>	Thin-leaved Coondoo
<i>Podocarpus elatus</i>	Plum Pine
<i>Polyscias elegans</i>	Celerywood
<i>Psychotria loniceroides</i>	Hairy Psychotria
<i>Rhodosphaera rhodanthema</i>	Deep Yellowwood
<i>Sarcopteryx stipata</i>	Steelwood
<i>Sloanea australis</i>	Maiden's Blush
<i>Solanum aviculare</i>	Kangaroo Apple
<i>Stenocarpus sinuatus</i>	Firewheel Tree
<i>Sterculia quadrifida</i>	Peanut Tree
<i>Syzygium floribundum</i>	Weeping Lilly Pilly
<i>Syzygium francisii</i>	Giant Water Gum
<i>Syzygium hemilamprum</i>	Broad-leaved Lilly Pilly
<i>Syzygium ingens</i>	Red Apple
<i>Syzygium luehmannii</i>	Riberry
<i>Syzygium moorei</i>	Durobby
<i>Syzygium oleosum</i>	Blue Lilly Pilly
<i>Syzygium smithii</i>	Common Lilly Pilly
<i>Syzygium smithii</i> var. <i>minor</i>	Dwarf Lilly Pilly
<i>Toechima dasyrrhache</i>	Blunt-leaved Steelwood
<i>Toona ciliata</i>	Red Cedar
<i>Trema tomentosa</i> var. <i>aspera</i>	Native Peach
<i>Trema tomentosa</i> var. <i>viridis</i>	Poison Peach
<i>Tristaniopsis laurina</i>	Water Gum

THANK YOU, THE COLIN JAMES METHOD

It's lovely to have you by our side on our mission to regenerate critically endangered rainforest in Northern NSW.

Thank you for valuing what we do and supporting us.

Please visit us sometime to see your planted trees - there's something so special about watching trees grow!

Warm regards,

Maximo

If you have any further queries please contact me on

0415 134 941

or

info@reforestnow.org.au



Maximo Bottaro
Co-Founder & CEO of ReForest Now





From your first tree planted in November 2022 to your soon to be planted trees in 2024, thank you for your ongoing support.

