

---

# PLANTING REPORT

1,818 trees planted  
for donation made on May 30, 2024



**Nando's**



*Prepared by:*  
*Leonie Zauzig*

[info@reforestnow.org.au](mailto:info@reforestnow.org.au) (+61)415 134 941

---



ReForest Now Ltd  
Trading as: ReForest Now

ABN 40 887 914 802 | ACN 656 965 856

3/11 Booyun Street  
Brunswick Heads NSW 2483



ReForest Now is registered as a charity with  
the Australian Charities and Not-for-profits  
Commission (ACNC). NSW License Number: CFN 24812.

Donations over \$2 are tax deductible.



We acknowledge the the Aboriginal People of the  
Bundjalung Nation as the Traditional Custodians of the land  
we work on and thank them for protecting ecosystems since  
time immemorial.

# SUMMARY OF OUTCOMES

---

\$10,000 donated on May 30th 2024 - 1,818 trees planted

Thanks to you Nando's Australia, another 1,818 native rainforest trees are now in the ground. They are already beginning to change the landscape they sit within. Your donation has been utilised across two sites in the Northern Rivers region of NSW, Australia. We have connected more landholders with their land and with the very special - and critically endangered - Big Scrub Rainforest.

Only 1% of the Big Scrub Rainforest remains after significant land clearing from the 1800s. The last stands of this ecosystem are disjointed remnants, often separated by many kilometres that impede their natural functions and result in low genetic diversity.

Repairing this ecosystem and the biodiversity that it supports is imperative to the conservation and protection of this region and local communities.

With help from your trees, we have been able to increase flood resilience, as well as conserve key characteristic flora in this region.

An incredible 86 endemic species have been planted across the two planting days you funded. One day soon these small trees will be supplying seed to the surrounding area, giving nature more opportunity to regenerate on its own.





# PLANTING SUMMARY

Your 1,818 trees were planted across two sites in Northern New South Wales, each contributing to a larger conservation effort to preserve and expand the critical Subtropical Lowland Rainforest ecosystem in the region.

One of these sites also focuses on enhancing flood resilience in an area prone to flooding.



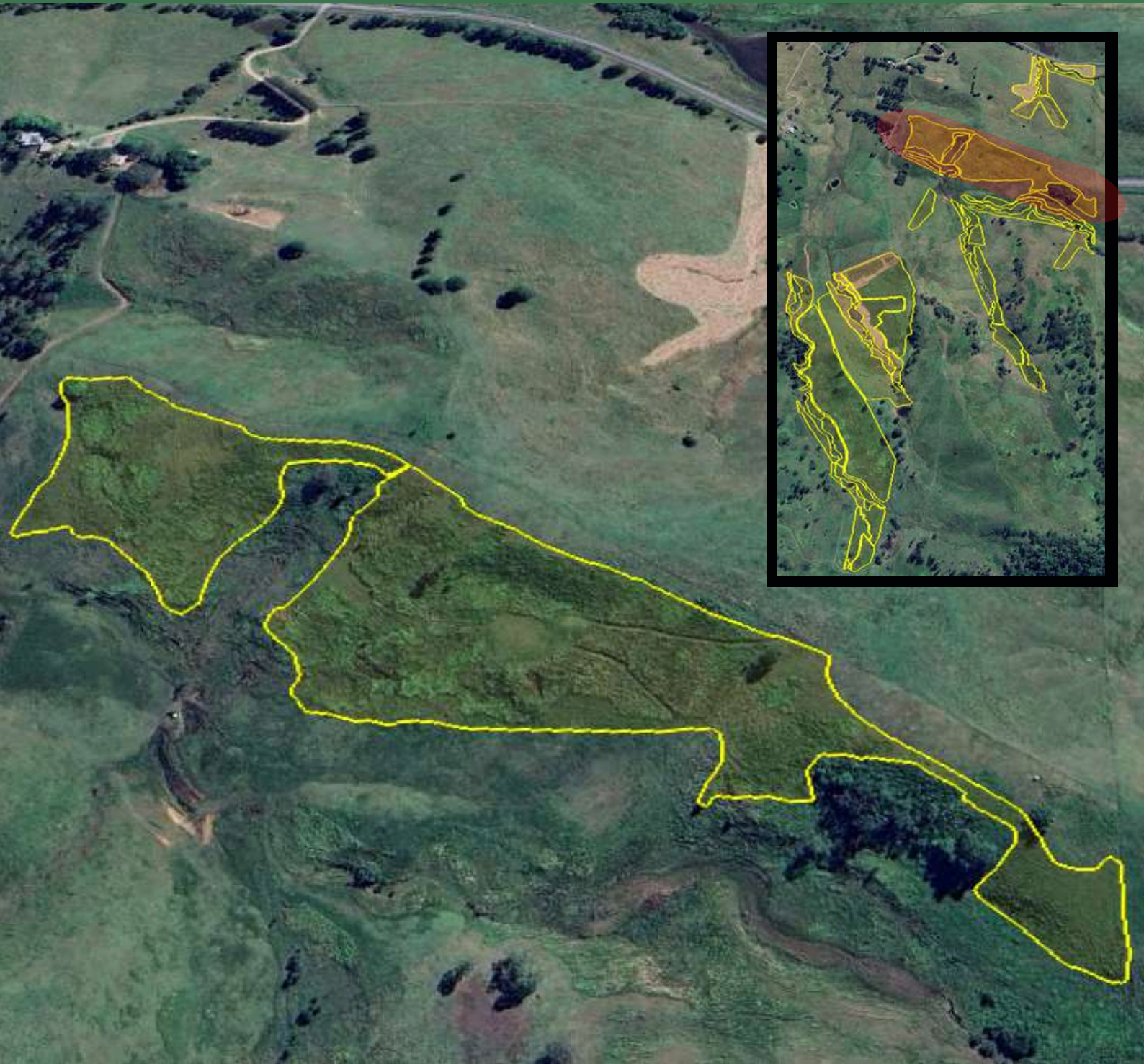
Date	Location	Nando's Trees Planted
June 19, 2024	767 Afterlee Road, Eden Creek NSW	1,090
June 20, 2024	688 Myocum Road, Myocum NSW	728





## MAPPING

### 767 Afterlee Road, Eden Creek NSW



With your donation we further expanded a significant regional reforestation project in Eden Creek. The root systems of the planted trees will function as support for the steep terrain and prevent further erosion.

On this site alone, we have planted **57,321** rainforest trees of **78** native species. It is one of our largest rainforest plantings! Thank you for being a major part of it.



# SPECIES LIST - EDEN CREEK NSW

A total of 78 species were planted in Eden Creek, NSW.

<i>Acacia Disparrima</i>	Ironbark wattle
<i>Acacia Floribunda</i>	White Sally Wattle
<i>Acacia Melanoxylon</i>	Blackwood
<i>Acmena Smithii</i>	Common Lilly Pilly
<i>Acronychia oblongifolia</i>	Common Acronychia
<i>Alchornea ilicifolia</i>	Native Holly
<i>Allocasuarina torulosa</i>	Forest Oak
<i>Alphitonia excelsa</i>	Red Ash
<i>Alphitonia petriei</i>	Pink Ash
<i>Aphananthe philippinensis</i>	Rough leaf elm/ White elm
<i>Araucaria cunninghamii</i>	Hoop Pine
<i>Archidendron hendersonii</i>	White Laceflower
<i>Argyrodendron Trifoliolatum</i>	White Booyung
<i>Auranticarpa rhombifolia</i>	Hollywood
<i>Backhousia Anisata</i>	Aniseed Myrtle
<i>Backhousia myrtifolia</i>	Cinnamon Myrtle
<i>Baloghia inophylla</i>	Brush Bloodwood
<i>Brachychiton acerifolius</i>	Flame Tree
<i>Brachychiton discolor</i>	Lacebark Tree
<i>Callicarpa pedunculata</i>	Velvet Leaf
<i>Castanospermum Australe</i>	Black Bean
<i>Casuarina Cunninghamiana</i>	River Oak
<i>Commersonia bartramia</i>	Brown Kurrajong
<i>Diospyros pentamera</i>	Black Ebony
<i>Diploglottis australis</i>	Native Tamarind
<i>Diploglottis campbellii</i>	Small-Leaved Tamarind



## SPECIES LIST - EDEN CREEK NSW cont..

<i>Duboisia myoporoides</i>	Corkwood
<i>Dysoxylum Fraserianum</i>	Rosewood
<i>Ehretia acuminata</i> var. <i>acuminata</i>	Koda
<i>Elaeocarpus grandis</i>	Blue Quandong
<i>Elaeocarpus obovatus</i>	Hard Quandong
<i>Erythrina Vespertilio</i>	Bat Wing Coral Tree
<i>Euroschinus falcatus</i>	Ribbonwood
<i>Ficus coronata</i>	Creek Sandpaper Fig
<i>Ficus fraseri</i>	Sandpaper Fig
<i>Ficus Macrophylla</i>	Moreton Bay Fig
<i>Ficus Obliqua</i>	Small Leaved Fig
<i>Ficus Superba</i>	Deciduous Fig
<i>Ficus Virens</i>	Rock Fig
<i>Ficus Watkinsiana</i>	Strangler Fig
<i>Flindersia australis</i>	Teak
<i>Flindersia schottiana</i>	Cudgerie
<i>Flindersia xanthoxyla</i>	Yellowwood
<i>Glochidion ferdinandi</i>	Cheese Tree
<i>Glochidion sumatranum</i>	Umbrella Cheese Tree
<i>Gmelina leichhardtii</i>	White Beech
<i>Grevillea robusta</i>	Silky Oak
<i>Guioa semiglauca</i>	Guioa
<i>Harpullia Pendula</i>	Tulipwood
<i>Hicksbeachia pinnatifolia</i>	Red boppel nut
<i>Homalanthus Populifolius</i>	Bleeding Hearts
<i>Hymenosporum flavum</i>	Native Frangipani

## SPECIES LIST - EDEN CREEK NSW cont...

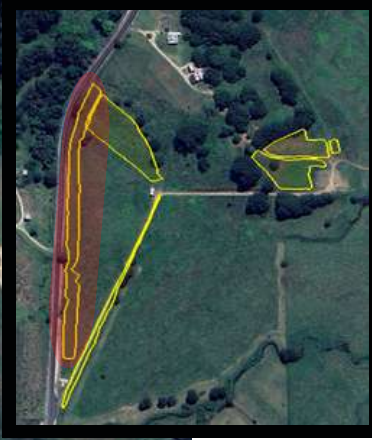
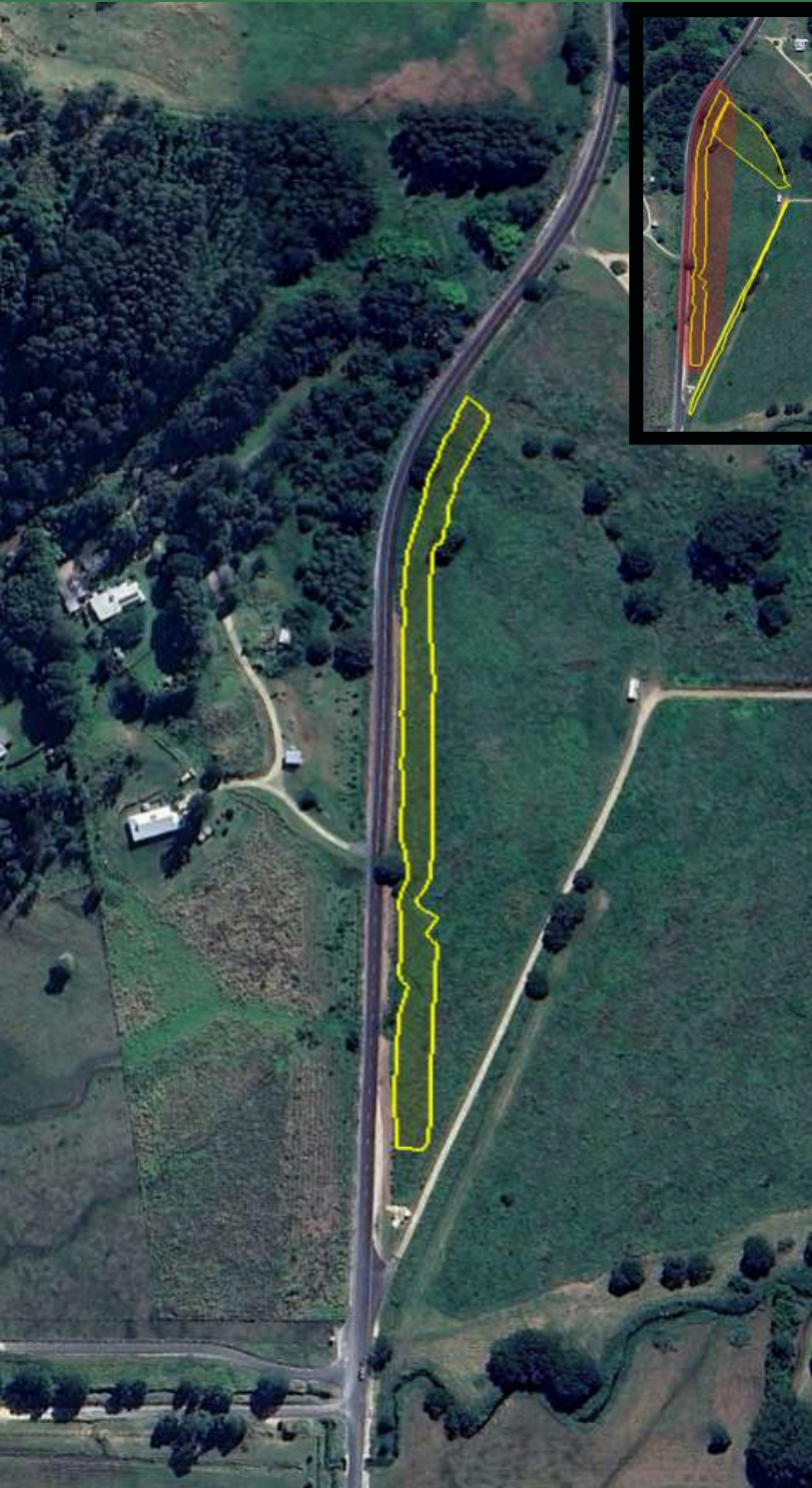
Jagera pseudorhus	Foambark Tree
Lophostemon confertus	Brush Box
Lophostemon suaveolens	Swamp Box
Macaranga Tanarius	Macaranga
Mallotus philippensis	Red Kamala
Melaleuca quinquenervia	Paperbark
Melia azedarach var. australasica	White Cedar
Owenia cepiodora	Onion Cedar
Pararchidendron pruinosum	Snow wood
Pittosporum undulatum	Sweet Pittosporum
Planchonella australis	Black Apple
Podocarpus elatus	Plum Pine
Polyscias elegans	Celerywood
Polyscias murrayi	Pencil Cedar
Rhodamnia rubescens	Scrub Turpentine
Rhodomyrtus psidioides	Native Guava
Rhodosphaera Rhodanthema	Deep Yellowwood
Stenocarpus sinuatus	Firewheel Tree
Sterculia Quadrifida	Red-Fruited Kurrajong
Streblus Brunonianus	WhaleBone Tree
Syzygium francisii	Giant Water Gum
Syzygium hemilamprum	Broad-leaved Lilly Pilly
Syzygium luehmannii	Riberry
Toona ciliata	Red Cedar
Tristaniopsis laurina	Water Gum
Waterhousea floribunda	Weeping Lilly Pilly





# MAPPING

## 688 Myocum Road, Myocum NSW



Your donation also supported the planting of 728 trees for a flood resilience project in Myocum NSW.

This area is a floodplain, and your trees will help stabilise a large area alongside the road, shown to the left.

Rainforest trees develop robust root systems that serve as natural barriers against floodwaters.

By planting these trees, the road will gain added protection from potential land movement and erosion caused by flooding.

Increasing flood resistance is essential in this area. In 2022, the Northern Rivers faced the most devastating floods in recorded history.

The Wilsons River in Lismore reached its highest-ever-peak of 14.4m.

The floods caused severe damage to critical infrastructure, and recovery has taken years.



# SPECIES LIST - MYOCUM NSW

To enhance flood resilience, we planted only hydrophilic species known for developing complex root systems. As a result, the species list for this site is shorter than usual, comprising 18 species in total.

<i>Acacia disparrima ssp. disparrima</i>	Brush Ironbark Wattle
<i>Acacia floribunda</i>	White Sally
<i>Acacia maidenii</i>	Maiden's Wattle
<i>Acacia melanoxylon</i>	Blackwood
<i>Alphitonia excelsa</i>	Red Ash
<i>Callistemon viminalis</i>	Weeping Bottlebrush
<i>Casuarina cunninghamiana</i>	River Oak
<i>Eucalyptus robusta</i>	Swamp Mahogany
<i>Ficus obliqua</i>	Small-leaved Fig
<i>Grevillea robusta</i>	Silky Oak
<i>Harpullia pendula</i>	Tulipwood
<i>Leptospermum petersonii</i>	Lemon-scented Teatree
<i>Lophostemon confertus</i>	Brush Box
<i>Melaleuca Bracteata</i>	Black Tea-tree
<i>Melaleuca ericifolia</i>	Swamp Paperbark
<i>Melaleuca quinquenervia</i>	Broad-leaved Paperbark
<i>Syzygium ingens</i>	Red Apple
<i>Trema tomentosum var. aspera</i>	Native Peach







# THANK YOU, NANDO'S AUSTRALIA

Thank you again, Nando's Australia, for your first donation and support of ReForest Now. You are making a direct impact on the conservation of one of Australia's most significant and biodiverse ecological communities.

We are humbled to be supported by a large-scale organisation like Nando's. It is an honour to be selected for your funding. We are proud of the hard work we do and the fantastic survival rate and overall outcomes we are seeing in our plantings.

The potency of Nando's support here in the Byron Shire is regionally significant. You are changing our landscape for the better. I believe your choice to support us is well placed, evidenced by the fact that our federal government has recognised this region as being of high ecological value. Unfortunately, the Subtropical Lowland Rainforest is critically endangered, which is why it has received the highest level of protection.

The high biodiversity we utilise in our plantings also means that far into the future, your forests will have the structural features of a well-established, natural rainforest, even though they were human-made. To ensure that our young trees have an optimal chance of survival, we are maintaining our planting sites until the trees are self-sufficient.

The work you do here will expand, it will seed, and create more rainforests. This is a winning battle in a world with far more complicated reforestation challenges elsewhere. At least we know that here we can realise a win for the Earth, where the rules are in her favour.

We are grateful to have you at our side. We value organisations that have long-term vision. Growing a reforestation charity is a constant hustle of proving the value of what you do. Thank you for valuing what we do and supporting us.

Yours sincerely,

A handwritten signature in black ink, appearing to read 'Maximo Bottaro', written in a cursive style.

Maximo Bottaro - Co-Founder & CEO of ReForest Now







**Together we can restore threatened rainforest ecosystems in Australia and Indonesia.**

