



SITE SUCCESS REPORT

375 Coorabell Road, Coorabell NSW



Prepared by :

Maximo Bottaro
Kallen Marecic
Franzi Kinzel
Oisin Canney

ReForest Now

info@reforestnow.org.au
(+61)415 134 941

REFOREST NOW LTD
Trading as: ReForest Now

ABN 40 887 914 802 ACN 656 965 856

3/11 Booyun Street, Brunswick Heads NSW 2483
Australia



ReForest Now is registered as a charity with the
Australian Charities and Not-for-profits Commission
(ACNC). NSW License Number: CFN 24812

Donations over \$2 are tax deductible.

Introduction

Welcome to a site success report. The method used here is video reporting. A novel method, while non-scientific and very visual - it probably offers you more than any previous styles of reporting.

You can see the forests for yourself. The survival, the growth size, and the shade cast... With the site being hillside, these effects will slowly change the microclimate on that entire site; as updrafts of moist air are captured and it becomes more humid. Shade will encourage fungi, bacteria, insects, birds and more to return.

In these conditions you will soon see native ground covers return to the site (within another 2 years). Additionally, some species of the rainforest trees are just now starting to fruit and create sufficient habitat to attract wildlife.

In a few more years we will add some specialised vines, and spores for epiphytes. Please enjoy the outcome of your trust in our team.

- Maximo

SITE CONTEXT

The planting site at 375 Coorabell Road, Coorabell NSW is located alongside the Wilsons River.

The Wilsons River originates in the Nightcap Range, which is part of the UNESCO World Heritage-listed Gondwana Rainforests of Australia. The river is significant for the local rainforest ecosystem, as it provides water and nutrients to the vegetation that grows along its banks. Seed distribution through the Wilsons River is another important process that contributes to the growth and regeneration of the rainforest ecosystem along its banks.

The rainforest along the Wilsons River is home to a diverse range of plant and animal species, many of which are found nowhere else in the world.

There is a very high probability of multiple threatened species within this community, such as :

- Albert's Lyrebird
- Masked Owl
- Southern Pink Underwing Moth
- Peach Myrtle
- Smooth Davidson's Plum
- Onion Cedar



This marvellous giant Blue Quandong is to be used as a landmark of the southwest corner of the site.

make note of it on the site map

PLANTING SUMMARY

Location: 375 Coorabell Road, Coorabell NSW 2479 AUSTRALIA

DATE	TOTAL PLANTED
25/4/20	531
28/4/20	1,020
2/10/20	1,502
7/10/20	1,497
9/10/20	1,520
14/10/20	1,498
16/10/20	1,451
21/10/20	1,512
11/11/20	1,502
2/12/20	1,190
4/12/20	1,457
11/12/20	1,650
19/12/20	1,498
23/12/20	1,553
TOTAL	19,381

DONOR LIST

Location: 375 Coorabell Road, Coorabell NSW 2479 AUSTRALIA

DONOR	TOTAL PLANTED
Ecosia	10,759
Go-To Skincare	5,701
Rainforest 4 Foundation	980
Individual Website Donors	818
Maddy Gray (Meditation)	260
Talenza	255
Qudos Bank	247
NATIF	70
undicloth	60
Sol Cups	50
Tier Gear Tasmania	46
Regrow Australia	43
Fresh Prince	40
The Yoga School (Jessica Koomen)	25
Kaola Clothing	18
Simply Ethical Advice	4
Mapilogy	3
Laluca Creative	1
Jasmine Coe Art	1

SITE MAP

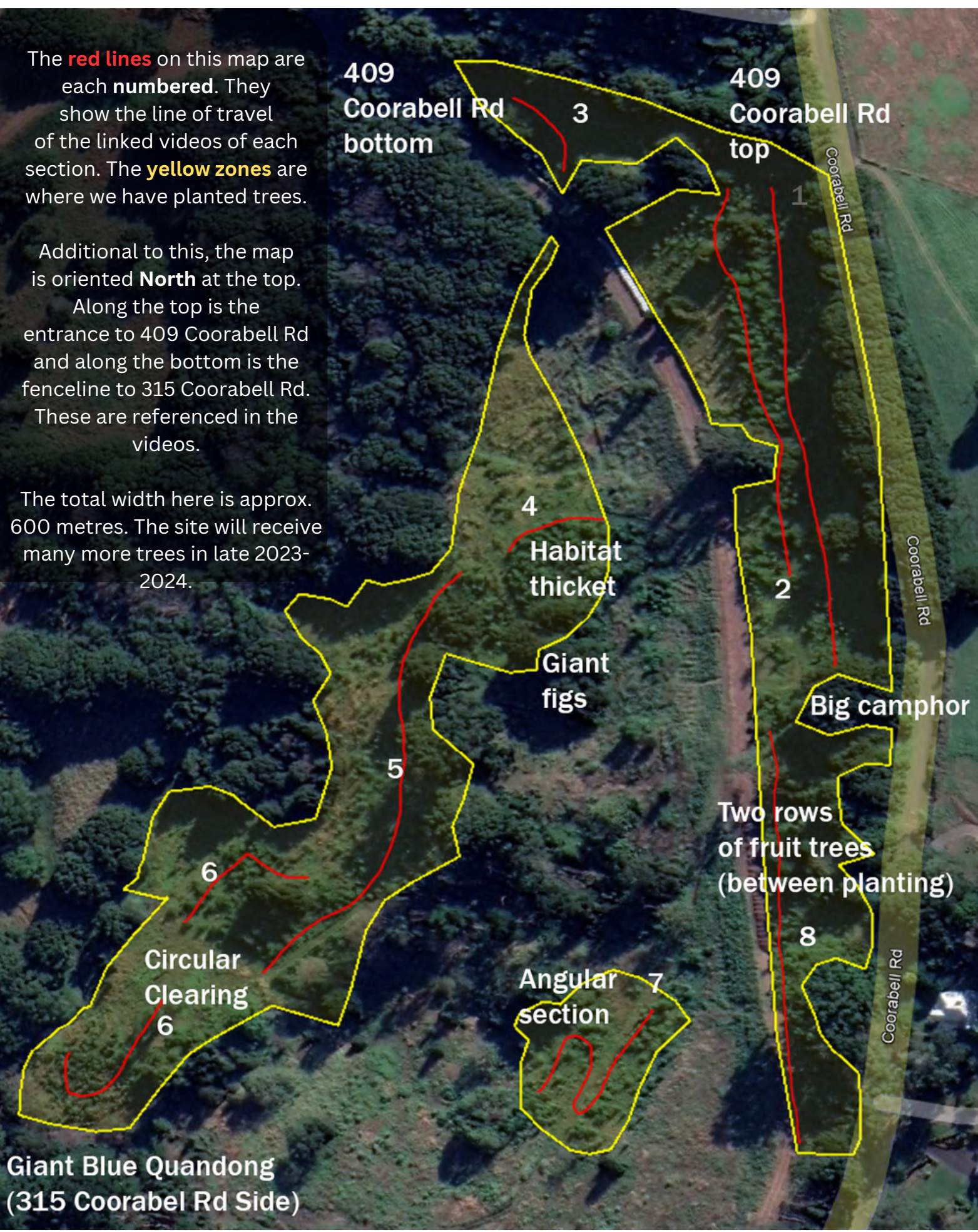
Mapping shows 19, 381 rainforest trees planted at 375 Coorabell Rd, Coorabell NSW

The **red lines** on this map are each **numbered**. They show the line of travel of the linked videos of each section. The **yellow zones** are where we have planted trees.

Additional to this, the map is oriented **North** at the top.

Along the top is the entrance to 409 Coorabell Rd and along the bottom is the fenceline to 315 Coorabell Rd. These are referenced in the videos.

The total width here is approx. 600 metres. The site will receive many more trees in late 2023-2024.



REPORTING SECTION 1

In truth, we intended to measure this site with a drone and experienced difficulties. With on the spot improvisation we have decided on a new technique to report on the whole 19,381 trees planted on the site. We filmed a 9 section walkthrough and uploaded this to YouTube with video links in each section. While a degree of scientific presentation is usually preferred, this shows you what you really wanted to see. This is 2.5 - 3 years of growth using our method and in our region.

The reporting videos are broken into 8 sections as per the site map on the previous page.

Section 1 : The oldest planting, along the top of the property, parallel to Coorabell Rd.

Link to video introducing section 1 :

[INTRO 1](#)

Link to a walk-through video of trees in section 1 :

[WALK 1](#)

Reporting for here specifically mentioning Ecosia re: latest written report on this section.

Some of these trees are already 6 or more meters tall in 3 years. We have just fertilised here with CK77s so expecting another big growth spurt to end the growth season.



REPORTING SECTION 1

For reference : this is how sections 1 and 2 looked at the time of planting in April 2020.

*note, in video 1 you can still see the pine trees (introduced species, *we will cull them later*).



These camera shots are taken from the highc409 Coorabell Rd side, three years ago (current date May 2023).

The trees were just being planted.



REPORTING SECTIONS 2 & 3

Section 2. A lower run along this same large section.

INTRO 2

Walk through of trees here :

WALK 2

Note: these forests are so established we are trekking through the parts that haven't already closed up, so we are due to find dead trees where we walk, looking left and right however, one can see it's very full and thick around us.

Section 3. A section further west, downhill and heavily shaded.

INTRO 3

Walk through of trees here :

WALK 3

Further down the hill, there is more competition from old camphors we do not yet have permission to cull. Thus, growth is slower and weed competition is stronger. However, survival is still good.



REPORTING SECTIONS 4 & 5

Section 4. A special area planted at 1 to 1.2 meter spacing called a 'habitat thicket' use to increase wildlife in forests.

INTRO 4

Walk through of trees here :

WALK 4

Section 5. A long stretch running downhill past Two Giant Figs (*shown in the video*).

INTRO 5

Walk through of trees here. :

WALK 5

*Note: In the WALK 5 video at 2.24 seconds, Maximo stands in the same position and posture as this photograph 2.5 years ago. Volunteers in the background can be seen planting *Lomandras* used to delineate the 4x4 maintenance track.



REPORTING SECTIONS 6 A & B



Section 6.

Two low lying areas along the creek. This is the bottom corner of the map facing 315 Coorabell Rd. The intro for section 6 (below) refers to a giant fig, visible in the background behind Maximo. This is the giant tree shown on the site context page of this report.

In the above photo from 2.5 years ago that giant fig is behind us. In the video we walk straight towards the area shown in this image.

The forest here is right next to a creek and almost all of it was impassable because it had grown so densely. We broke through the thinnest parts we could, which would have dead trees if we were to find any at all.

Again please refer to the flanks of the video walk path to see what else is around.

INTRO 6

Walk through of trees here :

WALK 6A

WALK 6B

REPORTING SECTION 7

Section 7: A high, dry, exposed section that receives large amounts of sun.

This area should have had a lot of deaths given rocky soil, sun exposure and a drier planting period. However, it seems to have done extremely well. This should be credited to our continuous use of 600ml hydrated water crystals per hole, being 400mm deep each.

INTRO 7

Walk through of trees here :

WALK 7



Osh stands in the shade of mixed rainforest trees planted. The sun is still desperately trying to get through but the site is almost self shaded, which will mean weeds won't be able to come back soon enough.

REPORTING SECTION 8



We can't possibly show how huge your trees are already.

Yet, photo like this gives some idea..

Looking into the background, there are *Acacias* there that are at least 4x Maximo.

So heading towards 8 meters+ and some are even larger.

We fertilised all your trees last week, at the end of April 2023, so we expect another huge growth spurt along with 50mm of rain predicted next week.

Section 8.

A 300 meter long section, interrupted by 2 rows of fruit trees (hand signalled in the video).

INTRO 8

Walk through of trees here :

WALK 8

As per the map, 2 rows of domestic fruit trees were left alive (where Maximo stops and makes crossed hands and eating gestures). The large tree seen at 35 seconds is another very old Quandong (*Elaeocarpus kirtonii*) that somehow survived earlier clearing. Later, a huge fig can be seen in the background at 1.13 secs. That is 100 year old Small-Leaved Fig. We of course, plant these for you.

Thank you for believing and I sincerely hope the videos impressed you with what has already been made real with your donations.

Please consider continuing supporting us into the second half of 2023 for more wins for the environment.

(+61)415 134 941
or
info@reforestnow.org.au

Yours sincerely,

A handwritten signature in black ink, appearing to read 'Maximo Bottaro', with a stylized, flowing script.

Maximo Bottaro - CEO of ReForest Now



Thank you to everyone!

**Together, we are bringing back
the rainforest.**