

---

REFOREST NOW

# ANNUAL AND FINANCIAL REPORT

2020-2021

[reforestnow.org.au](http://reforestnow.org.au) / [info@reforestnow.org.au](mailto:info@reforestnow.org.au)

---



REFOREST NOW IS AN AUSTRALIAN NON-GOVERNMENT AND  
NON-PROFIT ENVIRONMENTAL ORGANISATION.

AUSTRALIAN BUSINESS NUMBER: 40 887 914 802

REFOREST NOW IS REGISTERED AS A CHARITY WITH THE AUSTRALIAN CHARITIES AND  
NOT-FOR-PROFITS COMMISSION (ACNC) WITH THE CHARITABLE FUNDRAISING NUMBER  
24812. NSW FAIR TRADING REGISTRATION INC1800070.

[REFORESTNOW.ORG.AU](http://REFORESTNOW.ORG.AU)

[FACEBOOK.COM/REFORESTNOWAUSTRALIA](https://FACEBOOK.COM/REFORESTNOWAUSTRALIA)

[@REFORESTNOW\\_AUSTRALIA](https://@REFORESTNOW_AUSTRALIA)

*Prepared by Maximo Bottaro & Franzi Kinzel,  
edited by Kallen Marecic & Alice Moffett on behalf of ReForest Now*

# CONTENTS

---

*The planet is home to us all. Let's reforest it together.*


1	About ReForest Now
2	Our mission, values and achievements
4	Our people
5	Our supporters
8	Governance
9	President and CEO report
11	Partnerships report
13	Growth metrics
14	Project spotlights
17	Financial reports - An overview
18	Grants received
20	Gallery
25	Next steps
26	How we can work together

ReForest Now is a young (Est. 2018) not-for-profit environmental organisation based in Northern NSW. Our primary activities are growing and planting trees, bush regeneration, camphor culling and maintenance of plantings. These activities employ a strong and passionate team of local people with experience in bush regeneration, environmental science and conservation. We also facilitate a growing network of volunteers at our nursery and planting sites.

The sites we work on were once part of the Big Scrub rainforest - Australia's largest expanse of subtropical rainforest. After extensive clearing, less than 1% remains today. The remnants of this ecosystem are severely fragmented and degraded. Our work aims to regenerate, expand and reconnect the original rainforest. We grow over 100 species in our nursery in Mullumbimby and give a high priority to endangered and critically endangered species, as well as those that support the native fauna of the region.

In Far North Queensland (FNQ) we work in the Daintree Rainforest and Atherton Tablelands. Two highly diverse areas with ecology in the Daintree dating back to Gondwanan times, perhaps 150-170 million years ago. Here we have focused on closing down roads and tracks into the rainforest to allow for the expansion of cassowary habitat in particular and reduced fringe and fragment damage of dense endangered communities.

Tree planting through us is transparent, easy for everyone and approachable. Our model allows people and businesses to donate trees easily and know exactly where those trees are and why we have chosen each site. Over the last three years, we have partnered with many businesses of all sizes and in various industries that fundraise to donate trees. Our website donor platform is increasing and is seeing donations from individuals in over 40 countries.



*ReForest Now plants trees on behalf of donor individuals, organisations and businesses from around the world and is honoured to do this work on behalf of those who share our vision.*

## OUR MISSION AND VISION

ReForest Now was created by an unabated passion to see large-scale reforestation and regeneration of Australian rainforest ecosystems. Our team of scientists, bush regenerators and nurserymen are working with partners and individuals around the world to see the immediate and effective restoration of critically endangered rainforests.

We're collecting and growing the seeds of hundreds of varieties of rainforest species, teaching, learning and producing resources to further scientific understanding in fields such as; ecosystem restoration, endangered species management, bio precipitation, genetic diversity and fire ecology.

Rainforests support more than half of all the terrestrial biodiversity on the planet. We must restore them to oppose the worsening climate and ecological crises and repair the damage caused by our predecessors. There's a great team of passionate people here who are ready to act NOW on your behalf.

## OUR VALUES

Transparency, ecological awareness, collaboration, community involvement, integrity, hard work, physical outcome focus, caring for our workers and a fulfilling work life.

*We recognize the Earth as a living system and we make it possible for people from all stages of life to contribute to the protection, renewal and survival of our forests in Australia. Planting trees is one of the primary actions we can take to slow down climate change, among myriad other ecology services such as; pollution reduction/absorption, water quality, quantity and recycling, biodiversity, endangered species protection, bushfire and flood control.*

**166,158**

*rainforest trees planted in Australia  
(as of financial year 2020-2021)*

**28,433.4**

*tonnes of CO2 estimated sequestered  
once forest reaches maturity*

**37.7**

HECTARES

of land reforested

**36.6**

ADDITIONAL HECTARES

of rainforest regeneration works

**27**

LOCAL CONTRACTORS

in full-time or part-time  
conversation work (as of financial  
year 2020-2021)



Image: ReForest Now bush regeneration crew around a giant strangler fig with roots over 60 square meters of ground.

## BOARD & COMMITTEE MEMBERS

Chairperson



**MAXIMO BOTTARO**

*Cert III NAR, BSc,  
BClin, Hons 1st*

Deputy Chair



**JOSH FRY-HALL**

Secretary



**KALLEN MARECIC**

*BEnvSc (Hons)*

Founding Director



**TASHI MAIZY**

*Cert IV Veterinary  
Nurse*

Founding Director



**KIM O'SULLIVAN**

Founding Director



**ODIN RUNGA-COVINGTON**

Our work is a collective and collaborative effort. No single person or organisation can create the tide of reforestation needed alone. Our work is funded and supported by a range of generous individuals and donors who share our vision of reforestation and rainforest conservation.

Thank you to every individual donor who donates trees through our website or donates unallocated funds through donorbox. Thank you to every business partner who has chosen to plant trees on behalf of their customers, their product sales or services provided.

Together we truly are reforesting and we are proud to plant trees on behalf of you.

## **PARTNERS**

---

### **PRIOR TO AND CONTINUING IN THE '20-'21 FINANCIAL YEAR**

ECOSIA

The Foot Collective Australia

Foundation for Australia's Most

Endangered Species (FAME)

The Living Neuro

Maddy Gray Meditation

Mullumbimby Community Gardens

Mullumbimby Psychology

Mullum SEED

Patagonia

Plant for the Planet

Qudos Bank

Richmond Birdwing Conservation

Network (RBCN)

Santos Organics

Sol Cleanse

Sprout Nutrition

Talenza

Tigmi Trading

Treehuggers

Undicloth



**NEW IN THE '20-'21 FINANCIAL YEAR**

Alex Hanton, Herbal Nutrition

Avarcas Australia

Beyond Byron E-Bikes

Boo & Woo

Bush Tucker Babies

Captive Media Australia

Clinton & Co Accounting

The Daisy Lane

Duo Pilates

Earthwise Painters

Enso International

Feel Good Financial Services

The Good Loan Co

Go-To Skincare

Helm

KIGI

La Sape Records

Look Who's Charging

The MANA Movement

Mega Movement

Memory Lane The Label

NATIF

Night Grind

NtoN International

Piccolo Byron Bay

Restorative Prosthetics

SAP

Self Made Apparels

Simply Ethical Advice (Hope Evans)

Southern Cross Credit Union (SCCU)

Stevies Stall & Co

The Story of Telling

Sweet Nutrients

Tai Chi Forest

Tier Gear Tasmania

Weighted Lines

YAMA Movement

4 Amazonia

---

**CAMPAIGNS**

Alcana (clothing)

Byron View Farm

Care by Brooke McAlary

Frank Green

Gillie and Marc

Love Peace Harmony Movement Australia

Mim Gutsche Art

Plants in a Box

ReGrow Australia

Rooh Collective

Specialized Bicycles Australia

Stras Studs for Australia - Lycee Jean Rostant

**CAMPAIGNS CONTINUED**

Make Your Sh\*t Look Good  
Mawson Infrastructure Group  
Meluka Australia

Strasbourg  
VERVE Fitness  
The Yoga School

**GRANTS**

Ashby Utting Foundation  
Joanne Parkinson Foundation  
Landcare NSW  
LUSH Australia  
Sustainability and ESG Staff Training  
Program at Commonwealth

*(More detail under Grants Received page 17)*



**INDIVIDUALS**

ReForest Now opened a platform on the website in September 2019 to allow individuals from around the world to plant trees with us. Since then over 1,500 individuals from over 45 countries have donated trees through the website, many of which are monthly tree donors.

## GOVERNANCE

ReForest Now is registered with the Australian Charities and Not-for-Profit Commission (ACNC) with the ABN 40 887 914 802 and the NSW Incorporate number 18 000 70.

We are insured for 20 million through Ceneta Insurance and Landcare NSW. Our workers are secured by a full policy with Workcover (iCare) that covers them for all serious matters, including; permanent injury or death.

Our charitable fundraising authority is CFN/24812

We are in the process of applying to receive Tax Deductibility status and have a current tax concession from the Australian government.

## MANAGEMENT

Operational aspects of the organisation are based on a tiered responsibility system.

Tier 1. These staff members are responsible for the major aspects of the organisation such as; the nursery, finances, equipment, social media, partnerships, science, administration and so on.

Tier 2. These staff members have middle responsibilities, such as; maintenance, building, logistics, tools and HR.

Tier 3. These staff members have no responsibilities other than to follow our codes of conduct, safety and so on. They follow objectives from Tier 2 or 1 as required.

## CEO REPORT

### MAXIMO BOTTARO

*Cert III NAR, BSc, BClin, Hons 1st*

Hello and thank you to all the people who believed in our work and stood up with us.

In these very short three years since we started ReForest Now, we are within 15% of the capacity required to be considered a large charity by the ACNC. You, the early supporters are the reason this has been possible. We exist as your rapid response to climate change and we are growing as fast as you demand.

#### Reflection on major outcomes

As I review last years report, I can see that we've come to have planted over 120, 000 trees since then, when we'd just hit our first 45, 000 (73% of all the trees planted by us in total have been done since the 2020 financial year).

We've also more than doubled the area we are managing in natural area restoration from 16 hectares to 36.6 hectares (228.7% on last EOFY) and increased employment from 16 staff to 27 (168.7% on last EOFY).

Behind these primary outcomes, our budget has increased by nearly threefold this year on last year due to the support of individual donors, businesses, landholders and other supportive not for profits. From this, we've had the additional community outcome of being able to support five other local nurseries with over \$130, 000.00 in purchases for the dual outcome of increasing the genetic diversity of our planting stocks (as I promised to do in my research on the issue) and spread international money into our local economy.

#### Management improvements

So what's changed? We have become much more structured as a team in terms of stronger delegation to senior staff, efficiency and effective responsibility. The organisation has the stability to it now that is allowing us to take on greater tasks in helping Earth than ever before.



### Management improvements cont'

More powerful management responsibilities allow our veteran staff to flourish by taking on larger parts of the totality of what we do. With a HR person here to look after staff, we are able to maintain great retention rates and help people to be happier at work and find the best place available to let them grow within the organisation and stretch what RN can achieve.

### The path ahead

What I see ahead are big projects. Fewer sites, far bigger inputs. We have by now created three mega projects that each contain 30 or 40 thousand trees each, one of which is 2km by 1.5km in diameter, another 200 acres in diameter. Within 10 years, they will be visible from flights coming into Ballina or the Gold Coast. This is the size and scale that is required for us to effectively represent a serious attempt at resisting climate change in the representation of Byron Bay. 20 more giant sites like this over the next few years is the goal (*upwards of 600, 000 trees*). We are creating sites that are planted with upwards of 60 species of trees and contain/support rare and endangered species.

### A target, a promise

Our target by winter 2022 is to have planted **a quarter of a million rainforest trees**. Will we make it? On reflection on having planted 86, 000 trees between January 2021 and June 2021, I believe we now have the resources, manpower and equipment to reach this significant milestone. We have quickly moved up from planting 1,500 rainforest trees per day to a minimum of 3,000 and up to 5,500 per day. Come to the 2021-2022 annual report, I make this promise as CEO to fulfil this for you who believed in us. **250, 000 trees by June 2022.**



Maximo Bottaro - CEO

# PARTNERSHIPS REPORT

## KALLEN MARCEC

*BEnvSc (Honors)*

Hi there! I first started with RN in October 2020 and quickly got to know the small but passionate group, who were fighting for nature in their corner of the world. Thanks to RN I now have secure and meaningful work in ecological restoration, a hope I have for many. As someone who is emotionally, and quite rightfully, confronted by the state of our environment, my feelings of hopelessness quickly turned to empowerment when I could look back and see our achievements as a team in just one day's work.

It didn't take me long to realise this group of people had exactly the right values and attitude needed to make real and effective change – if only the model was scaled up, and the impact, bigger. Thankfully, the community had similar feelings to me. We are now a bustling organisation - with a core team of 27 staff, a diverse and productive rainforest nursery, a planting team, a tree maintenance unit, a bush regeneration unit, and a seed collection team harnessing the knowledge of several local experts.

Support has not only been received locally from the environmentally-conscious brands of Byron Bay, but from corporate businesses right across Australia, and even global organisations as far away as Germany. Everyone is eager to support us on our mission to restore Australian rainforest. There is no doubt it has been a very difficult year for many businesses. We deeply appreciate the continued support of our partners during the uncertain times of the pandemic. Even in the midst of such uncertainty, we have welcomed many new partners who have made ongoing commitments to assist us in restoring critically endangered rainforest. We hope to see this list continuing to grow as our world so desperately needs action from everyone. We have so much damage to restore.



Our business partnerships are our primary source of funding, accounting for hectares and hectares of rainforest reforestation and regeneration in northern NSW. This financial year, we expended our funding to restore rainforest in fire-affected areas. In November 2019, the Mt Nardi fire burnt more than 2,000 hectares of World Heritage Gondwanan Rainforest in Nightcap National Park. This area is considered 'a living museum of paleo-Antarctic plants that are found nowhere else in the world'. Together with our partners we are building up the resilience of this very special place.

We now have three mega planting projects online in the Byron Shire, each with tens of thousands of trees planted and nearby bush regeneration projects. We are working closely with landholders to transform land from cleared and degrading paddocks back into biodiverse subtropical rainforest.

In addition, we secured back-to-back grants to begin primary bush regeneration works in an ancient patch of the original Big Scrub rainforest - the Allansby remnant. We have relieved 2.5 hectares of the remnant from suffocating vines, lantana, privet and camphor laurel. This work has freed everything from giant trees (about to die from vine suffocation) to the next generation of tiny native saplings – This includes many rare and endangered species that are found here. We have further funding to conduct follow-up regeneration works to ensure the remnant is no longer neglected.

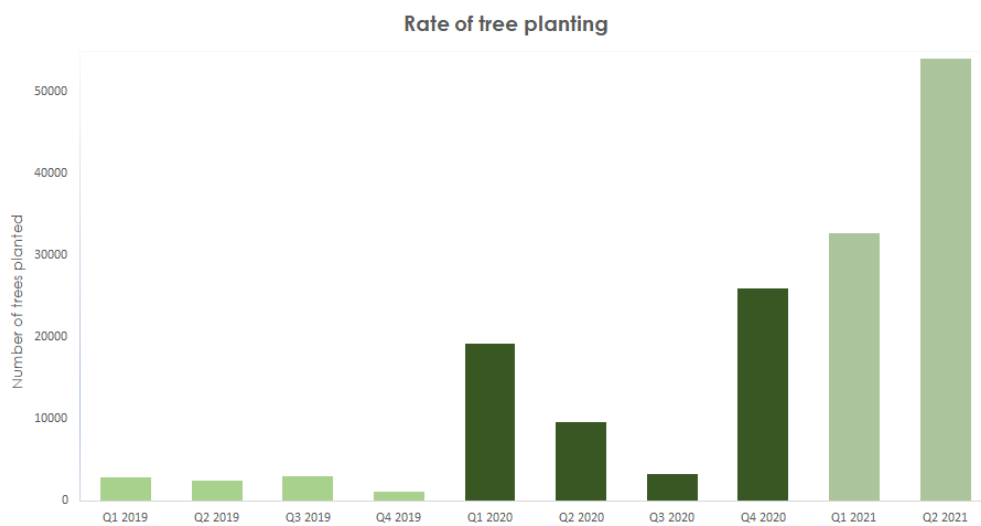
We continue to connect and engage with people from all over the world who want to take immediate action to restore natural ecosystems and mitigate the impacts of climate change. We treasure our current partnerships and explore new ones to strengthen our collective impact. As an organisation we are navigating fast growth in uncertain times. We do this all while ensuring the best possible outcomes on the ground.

*K. Marecic*

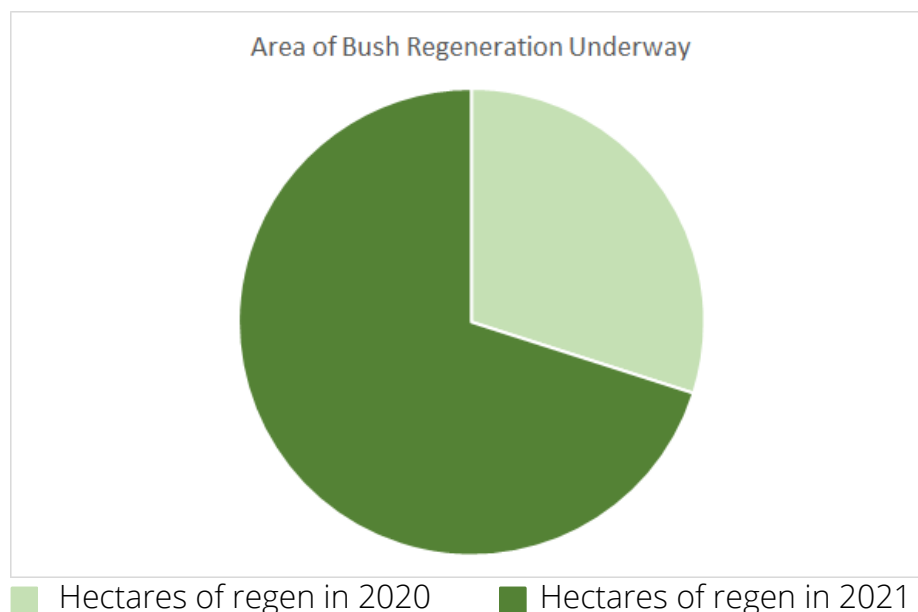
Kallen Marecic - Partnerships Manager

Compared to the last financial year 2019-2020 we were able to grow and achieve the following objectives:

- Increased employment from 16 staff members to 27 (+168% on last EOFY)
- Increased rate of tree planting with a total of 116,158 rainforest trees planted July 1st 2020 – June 30th 2021 (+327% on last EOFY when 35, 487 trees were planted between July 1st 2019 – June 30th 2020)



- Increased area of bush regeneration from 16.1 hectares in 2020 to 37.7 hectares in 2021 (+234% on last EOFY)





## REFORESTING THE HIGHEST POINT IN BYRON BAY

35,000 rainforest trees planted at the highest point in Byron Bay. It also includes 130 Richmond Birdwing Butterfly vines to attract known populations on St Helena Rd. There are tons of species in this planting, many for bird, moth and insect support.

This project will work in adjacency to several other large scale reforestation projects that have already been completed in the area.



*Image: ReForest Now planting crew at St Helena Rd, the highest point in Byron Bay.*

## A BIG SCRUB SANCTUARY FOR EUREKA, NSW

Over 58,000 rainforest trees planted and 3 hectares of rainforest regeneration well underway. More to come.

This is our biggest planting project to date!

The Allansby remnant is an ancient patch of the original Big Scrub Rainforest (only 1% remains). We have acquired a scientific licence and grants from multiple partners to save this remnant from degrading further and assisting its expansion. Our site partner has provided extensive labour and machinery work to assist in converting surrounding cow paddocks and camphor laurel into a rainforest paradise. Waterways are being repaired, nest boxes installed and more.



*Image above: Rainforest trees like this one were saved from weed and vine invasion. When the remnant rainforest patches have been restored they will maintain themselves.*



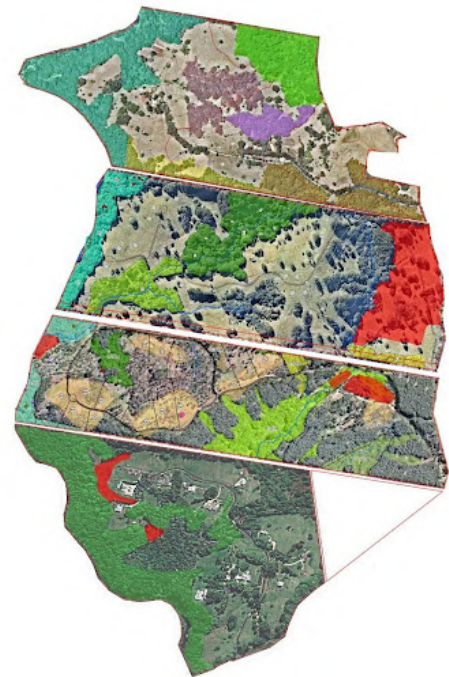
*Image: Yellow = plantings (58,000 trees). Teal = bush regeneration (2.55 ha)*

## THE GREEN DIAMOND - A series of plantings and regeneration projects in Federal NSW

We are now well into a mega project that will see over 60 hectares of rainforest restored and 40 hectares of trees planted in Federal, NSW.

Dubbed the Green Diamond – it is a collection of adjacent properties we are gathering for contiguous projects. All coloured zones (except red) represent rainforest regeneration areas. All red zones represent areas already planted out with rainforest trees (as of Jan 31st, 2021).

This totals around 30,000 rainforest trees planted.

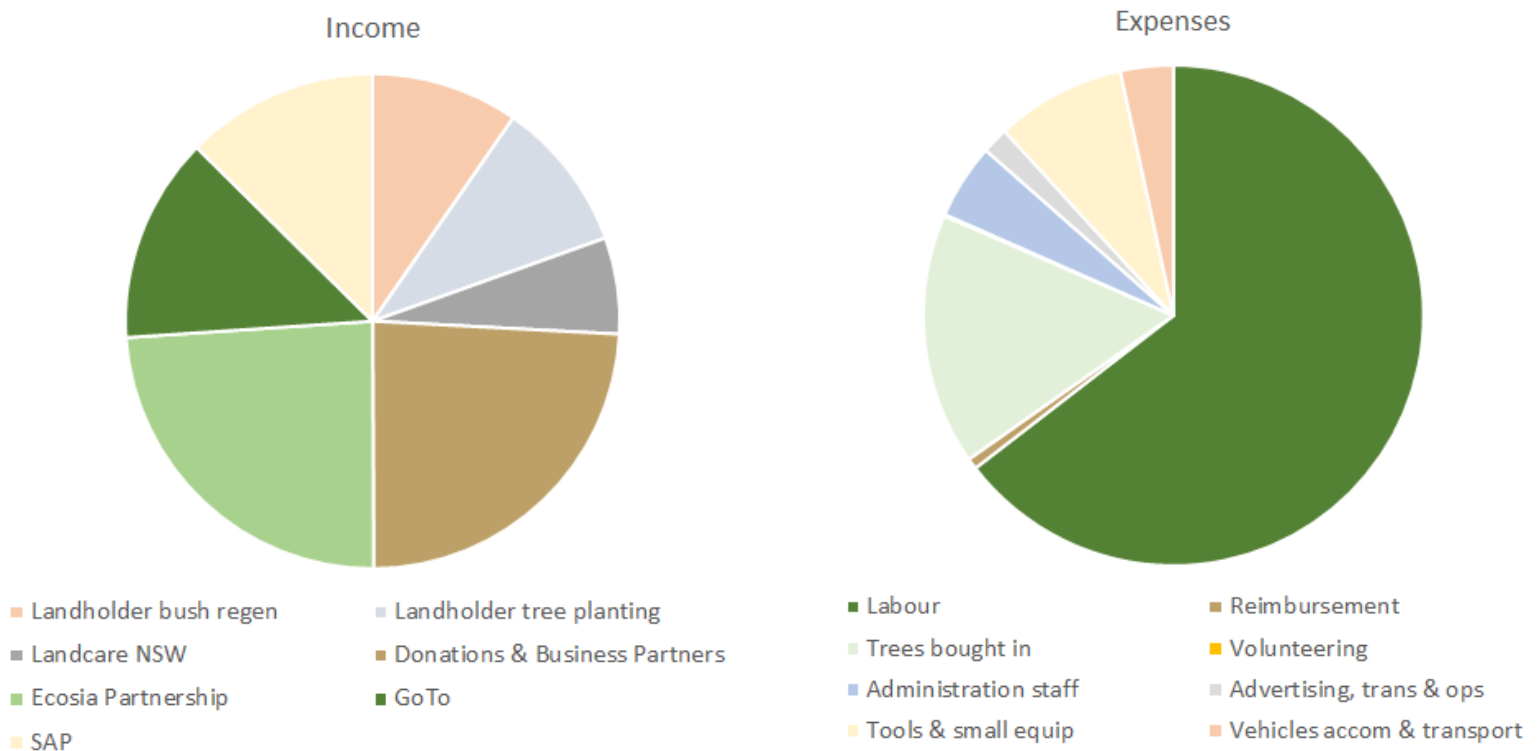


*Image: A view of the Wilson's River from the properties of the Green Diamond. The Wilson's is arguably the most resilient long stretch of riparian (river) rainforest in NNSW. Highly deserving of regeneration with many endangered species and large rainforest tree specimens.*

*Yet many areas have been invaded by lantana weed and the canopy finds itself battling and unable to support premature colonisation by vines.*

The entire left flank of this project is run by the Wilson's River, a central point for rainforest resilience in NNSW. The site is perfectly parallel with the Byron Bay lighthouse at a distance of 12 kilometres inland.

# INCOME AND EXPENDITURES



## Funds balance information

The financial year of 2020-2021 left in balance positive \$170,188 for the period between 31st of June 2020 to 1st of July 2021.



## Profit and Loss Statement

### ReForest Now Incorporated For the year ended 30 June 2021

	2021	2020
<b>Income</b>		
Amazonia Partnership	-	40,000
Bush Regeneration and Landholder Contributions	154,964	22,330
Donations & Small-Medium Business Partnerships	443,786	48,846
Ecosia Partnership	190,434	43,089
Grants Received	-	139,835
Rainforest 4 Partnership	4,008	28,531
<b>Total Income</b>	<b>793,192</b>	<b>322,631</b>
<b>Cost of Goods Sold</b>		
Opening Stock	77,000	-
Closing Stock	(162,500)	(77,000)
<b>Total Cost of Goods Sold</b>	<b>(85,500)</b>	<b>(77,000)</b>
<b>Other Income</b>		
Interest Income		28
<b>Total Other Income</b>		<b>28</b>
<b>Profit/(Loss) before Taxation</b>	<b>170,188</b>	<b>113,057</b>
<b>Net Profit/(Loss) Attributable to Retained Earning/(Losses)</b>	<b>170,188</b>	<b>113,057</b>
<b>Total Income</b>	<b>878,719</b>	<b>399,659</b>
<b>Expenses</b>		
Administration Expenses	11,645	14,206
Advertising	2,650	1,514
Assets Less Than \$500	-	4,370
Bank Fees	-	28
Consulting & Accounting	2,300	-
Depreciation	11,375	24,429
Donations	-	6,000
General Expenses	2,438	2,087
Insurance	1,092	-
Interest Expense	-	-
Motor Vehicle Expenses	10,160	22,639
Pots, Soil and Gravel	13,169	9,132
Repairs and Maintenance	38,895	21,729
Restoration & Regeneration	105,958	40,298
Subscriptions	833	-
Telephone & Internet	218	-
Travel - National	2,725	1,108
Tree Planting Expenses	503,070	135,275
Volunteer care	412	3,788
Training Expenses	1,591	-
<b>Total Expenses</b>	<b>708,532</b>	<b>286,602</b>
<b>Profit/(Loss) before Taxation</b>	<b>170,188</b>	<b>113,057</b>
<b>Net Profit/(Loss) Attributable to Retained Earning/(Losses)</b>	<b>170,188</b>	<b>113,057</b>

## Balance Sheet

### ReForest Now Incorporated As at 30 June 2021

	NOTES	30 JUN 2021	30 JUN 2020
<b>Assets</b>			
<b>Current Assets</b>			
<b>Cash &amp; Cash Equivalents</b>			
Westpac Community Solution **4136		74,326	5,882
Westpac Community Solution **5607		66,192	53,456
<b>Total Cash &amp; Cash Equivalents</b>		<b>140,518</b>	<b>59,338</b>
<b>Inventories</b>			
Stock on Hand		162,500	77,000
<b>Total Inventories</b>		<b>162,500</b>	<b>77,000</b>
<b>GST</b>			
GST		7,206	-
<b>Total GST</b>		<b>7,206</b>	<b>-</b>
<b>Total Current Assets</b>		<b>310,224</b>	<b>136,338</b>
<b>Non-Current Assets</b>			
<b>Property, plant and equipment</b>			
<b>Motor Vehicles at Cost</b>			
Motor Vehicles		18,500	7,500
Less Accumulated Depreciation on Motor Vehicles		(18,500)	(7,500)
<b>Total Motor Vehicles at Cost</b>		<b>-</b>	<b>-</b>
<b>Plant and equipment at cost</b>			
Plant and Equipments		16,554	16,554
Less Accumulated Depreciation on Plant and Equipments		(16,554)	(16,554)
<b>Total Plant and equipment at cost</b>		<b>-</b>	<b>-</b>
<b>Structural Improvements at Cost</b>			
Structural Improvement		14,986	14,986
Less Accumulated Depreciation on Structural Improvement		(749)	(375)
<b>Total Structural Improvements at Cost</b>		<b>14,236</b>	<b>14,611</b>
<b>Total Property, plant and equipment</b>		<b>14,236</b>	<b>14,611</b>
<b>Total Non-Current Assets</b>		<b>14,236</b>	<b>14,611</b>
<b>Total Assets</b>		<b>324,460</b>	<b>150,949</b>
<b>Net Assets</b>		<b>324,460</b>	<b>150,949</b>
<b>Equity</b>			
<b>Retained Earnings</b>			
Contributions from Members		37,893	37,893
Current Year Earnings		170,188	113,057
Retained Earnings		113,057	-
Historical Adjustments		3,323	-
<b>Total Retained Earnings</b>		<b>324,460</b>	<b>150,949</b>
<b>Total Equity</b>		<b>324,460</b>	<b>150,949</b>

**Landcare NSW - \$50,000**

10,000 rainforest trees planted in the 2021-2022 financial year.

**Joanne Parkinson Foundation - \$5,000**

1 hectare of the Allansby remnant regenerated in Eureka, NSW.

**SAP - \$100,000**

20,000 rainforest trees planted around the Allansby remnant in Eureka, NSW.

**The Mana Movement - \$5,000**

Over 7,000 rainforest trees potted up and minor nursery upgrades.

**Ecosia - \$190,434**

38,087 rainforest trees planted in the Byron Shire, NSW.

**Ashby Utting Foundation - \$7,000**

0.81 hectares of the Allansby remnant regenerated in Eureka, NSW.

**Treehuggers Bracelets - \$10,000**

Close to 1 hectare of land regenerated in Mullumbimby, NSW.

**Go-To Skincare Partnership - \$106,464**

21,329 rainforest trees planted in the Byron Shire, NSW.



## 2020-2021 IN PICTURES



*(left): Max drilling holes for rainforest trees. Our Augermen provide around 3,000-5,000 holes at every planting morning by 10.30 or 11.30am.*

*(below): Site preparation of clearing, slashing and burning or poisoning (at landholder's discretion) is followed by our process of; deeply drilled holes, 600ml of water crystals and additional fertiliser to ensure survival and growth of planted rainforest trees.*





## 2020-2021 IN PICTURES



*(left): Chris working under the canopy; here showing a rainforest insect nest on a sapling.*



*The rainforest is home to the largest diversity of terrestrial life seen on the planet at around 55% of the terrestrial total of species diversity.*

*We are very careful and limited in our application of chemicals in regeneration practices for this reason.*



*(above & next page): A giant strangler fig with roots covering over 60sqm.*

*Specimens like this are protected when we engage in rainforest regeneration practices to remove weeds and allow remnant trees to expand.*

# 2020-2021 IN PICTURES



*(left): ReForest Now crew in our nursery in Mullumbimby, NSW.*

*We grow over 80 varieties of native endemic rainforest species.*

# 2020-2021 IN PICTURES



---

## NEXT STEPS

---

The plan for 2021 was to wrap up with as close to a quarter of a million trees planted as possible. Moving into 2022, we want to transition from 35 staff to 50 staff by the end of the year.

We have plans to expand our nursery and we are underway on plans to open a second. Our operational capacity to deliver on bush regeneration outcomes will continue to grow with additional vehicles and equipment purchased to allow teams to take on more work.

By 2022 we hope to have a larger administration team, entirely for the purposes of reaching out for new and larger business partners and the servicing that will require.

We are also moving towards working away from home trips 2 to 5 hours from the Byron Shire. This increased scope of works will require new logistic prowess and of course factors such as having an in-house chef to look after remote crews, which we now have.

Realistically, during the calendar year of 2022, we should plant more trees than the total of the first 3 planting years, being '19, '20, '21 - with a target of over 250, 000 trees to plant in 2022 at a minimum.

Yours Sincerely,



Signed: Maximo Bottaro - CEO & Cofounder

The benefits of conserving and expanding the rainforest are for all of us, for the species within it and for the generations to come. Without forests of the world, we cannot survive and without a collective effort, the forests will not survive in a changing climate with ongoing threats of heat and drought from development.

The conservation and expansion of it is a collective effort and we welcome everyone to plant with us. There are different ways you can contribute to this work.

## DONATE TREES

---

Through our website, you can donate a number of trees once or on a monthly basis.

Follow this link to plant trees with us: [reforestnow.org.au/planttrees](https://reforestnow.org.au/planttrees)

## HELP US GROW

---

*Donating directly to us helps us grow as an organisation. These funds are used for purchasing new equipment, administration fees and other costs that we need to address in order to do our work.*

*Follow this link to help us grow:  
[donorbox.org/donate-to-reforest-now](https://donorbox.org/donate-to-reforest-now)*

## BECOME A BUSINESS PARTNER

---

Businesses of all sizes can become ReForest Now partners. By donating a percentage of sales, a tree for every product sold or another variation, we can grow rainforest together.

You will know where your trees have gone and the impact they have had through our reporting.

Email [partnerships@reforestnow.org.au](mailto:partnerships@reforestnow.org.au) to find out more.



REFOREST NOW IS AN AUSTRALIAN NON-GOVERNMENT AND  
NON-PROFIT ENVIRONMENTAL ORGANISATION.

AUSTRALIAN BUSINESS NUMBER: 40 887 914 802

REFOREST NOW IS REGISTERED AS A CHARITY WITH THE AUSTRALIAN CHARITIES AND  
NOT-FOR-PROFITS COMMISSION (ACNC) WITH THE CHARITABLE FUNDRAISING NUMBER  
24812. NSW FAIR TRADING REGISTRATION INC1800070.

[REFORESTNOW.ORG.AU](http://REFORESTNOW.ORG.AU)

[FACEBOOK.COM/REFORESTNOWAUSTRALIA](https://FACEBOOK.COM/REFORESTNOWAUSTRALIA)

[@REFORESTNOW\\_AUSTRALIA](https://@REFORESTNOW_AUSTRALIA)

*Prepared by Maximo Bottaro & Franzi Kinzel,  
edited by Kallen Marecic & Alice Moffett on behalf of ReForest Now*