



# Planting Report

## GO-TO

2,000 rainforest trees planted  
for \$10,000 donated in April 2023

*Prepared by:*  
Kallen Marecic  
Maximo Bottaro

**ReForest Now**

[info@reforestnow.org.au](mailto:info@reforestnow.org.au)

(+61)415 134 941

ReForest Now Ltd  
Trading as: ReForest Now

ABN 40 887 914 802 | ACN 656 965 856

3/11 Booyun Street  
Brunswick Heads NSW 2483



ReForest Now is registered as a charity with  
the Australian Charities and Not-for-profits  
Commission (ACNC). NSW License Number: CFN 24812.

Donations over \$2.00 are tax deductible.



We acknowledge the the Aboriginal People of the  
Bundjalung Nation as the Traditional Custodians of the land  
we work on and thank them for protecting ecosystems since  
time immemorial.



# PLANTING SUMMARY

Date	Location	Number of Go-To Trees Planted
June 1, 2023	113 Stewarts Road, Clunes, NSW	1,599
June 2, 2023	507 Coolamon Scenic Drive, Coorabell NSW	401
	TOTAL	2,000

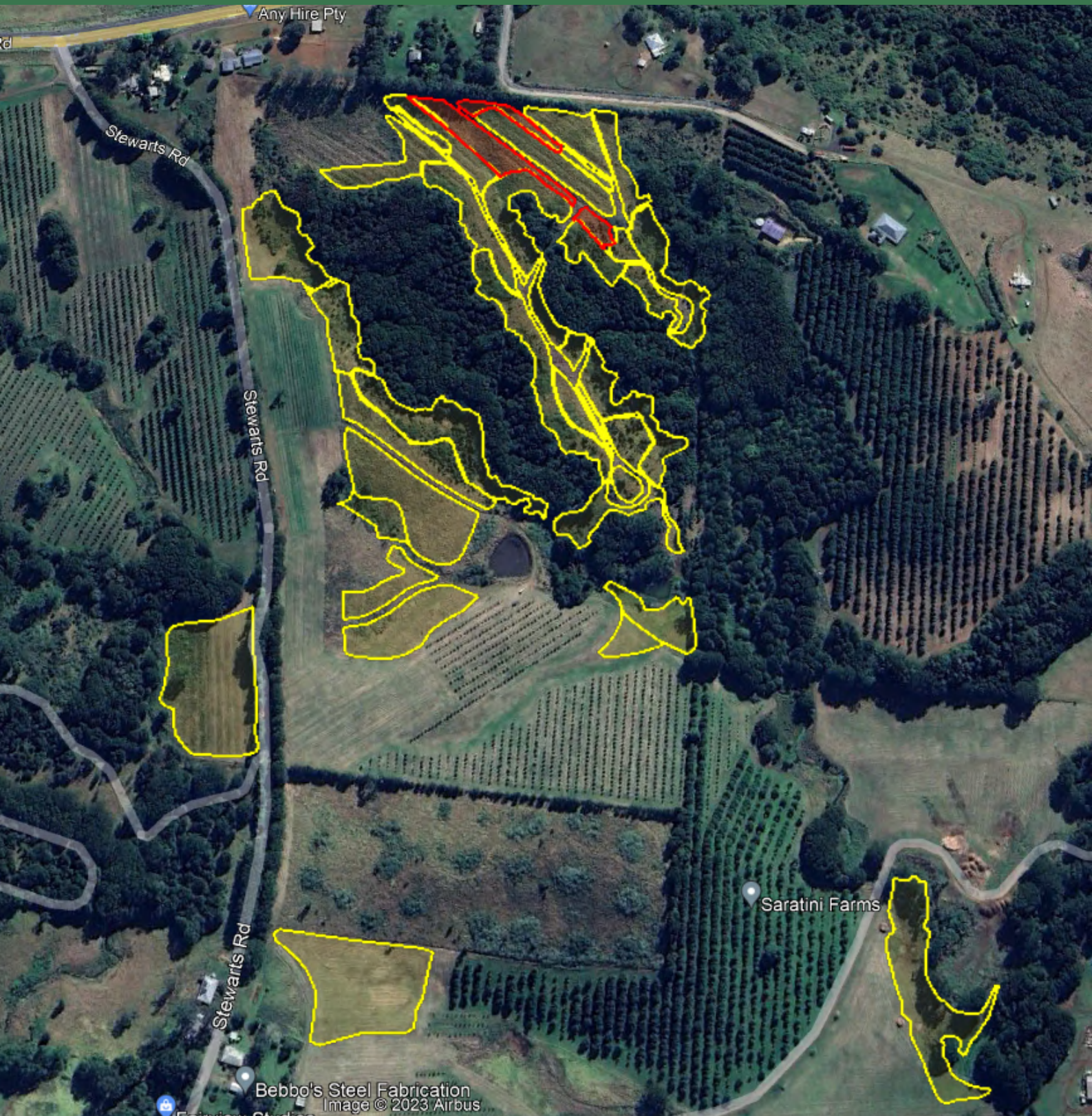
Additional reporting information and all contributing donors available at [reforestnow.org.au/findmytrees](https://reforestnow.org.au/findmytrees)





# MAPPING

## 113 STEWARTS RD, CLUNES (JUNE 1)



Your planting is highlighted here in **red**. The other yellow areas have been planted for many other donors like you. On this site alone, we have planted over 260,000 rainforest trees of 184 native species. This could be the largest and most diverse rainforest planting in Australia! Thank you for being a part of it.

Amongst the plantings are three thick wedges of established trees, which are part native rainforest/part invasive weeds. These areas are being converted back to fully native rainforest by our bush regeneration team, who are working alongside our planting efforts.





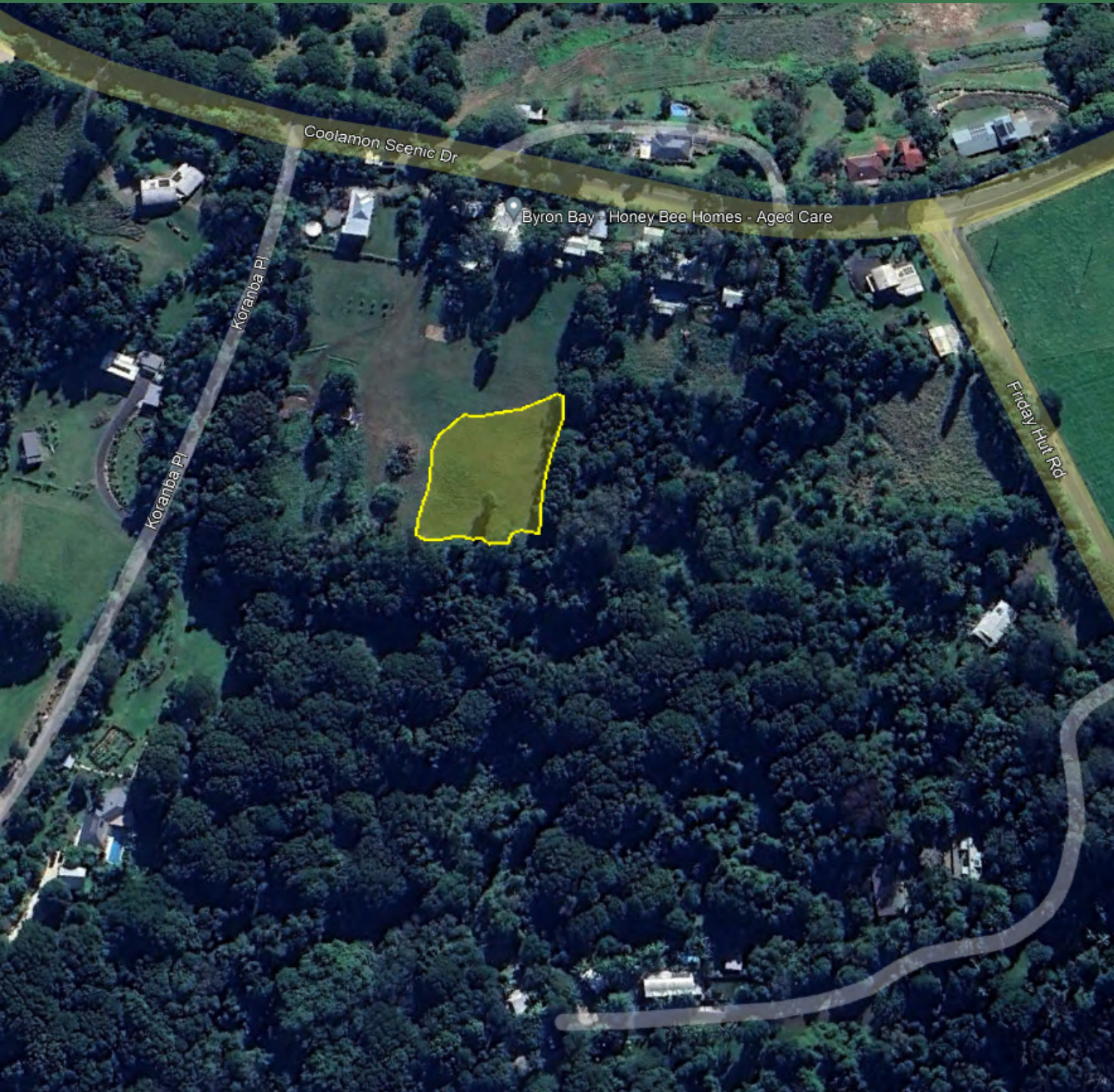
Photos from the day, June 1st - 113 Stewarts Rd, Clunes NSW





# MAPPING

## 507 COOLAMON SCENIC DR, COORABELL (JUNE 2)



In this scenario, we were able to extend existing forest out behind an aged-care centre. It's beautiful to have opportunities like this, where older people wanting a walk in the fresh air can see the beginnings of new life just at their doorstep.

The existing forest here is also a mixture of weeds and rainforest, but this planting will provide a reference population from which native ecosystem functions and seeds can influence the mixed forest in the surrounds.

## SPECIES LIST (JUNE 2)

Incorporating 51 species into one day of planting takes a lot of organisation. Between the saplings grown from seed in our nursery and purchasing from nearby nurseries, our team has achieved this level of diversity in a planting of only 1,500 trees.

<i>Abrophyllum ornans</i>	Native Hydrangea
<i>Acronychia oblongifolia</i>	Common Acronychia
<i>Allocasuarina torulosa</i>	Forest Oak
<i>Alphitonia excelsa</i>	Red Ash
<i>Alpinia caerulea</i>	Native Ginger
<i>Aphananthe philippinensis</i>	Rough-leaved Elm
<i>Banksia integrifolia</i>	Coastal Banksia
<i>Brachychiton acerifolius</i>	Flame Tree
<i>Callicarpa pedunculata</i>	Velvet Leaf
<i>Castanospermum australe</i>	Black Bean
<i>Cordyline stricta</i>	Narrow-leaved Palm Lily
<i>Cryptocarya glaucescens</i>	Jackwood
<i>Cryptocarya triplinervis</i>	Three Veined Laurel
<i>Cupaniopsis newmanii</i>	Long-leaved Tuckeroo
<i>Davidsonia jerseyana</i>	Davidson's Plum
<i>Diploglottis campbellii</i>	Small-leaved Tamarind
<i>Duboisia myoporoides</i>	Corkwood
<i>Dysoxylum mollissimum</i>	Red Bean
<i>Dysoxylum rufum</i>	Hairy Rosewood
<i>Elaeocarpus grandis</i>	Blue Quandong
<i>Elaeocarpus reticulatus</i>	Blueberry Ash
<i>Elaeodendron australe</i> var. <i>australe</i>	Red Olive Plum
<i>Elattostachys nervosa</i>	Green Tamarind
<i>Endiandra pubens</i>	Hairy Walnut
<i>Erythrina vespertilio</i>	Bats-wing Coral Tree
<i>Ficus coronata</i>	Creek Sandpaper Fig
<i>Ficus henneana</i>	Deciduous Fig
<i>Ficus rubiginosa</i>	Rusty Fig



## SPECIES LIST (JUNE 2) CONTINUED

<i>Ficus watkinsiana</i>	Strangler Fig
<i>Flindersia xanthoxyla</i>	Yellowwood
<i>Gmelina leichhardtii</i>	White Beech
<i>Grevillea robusta</i>	Silky Oak
<i>Hicksbeachia pinnatifolia</i>	Red Bopple Nut
<i>Homalanthus populifolius</i>	Bleeding Heart
<i>Hymenosporum flavum</i>	Native Frangipani
<i>Lophostemon confertus</i>	Brush Box
<i>Macadamia tetraphylla</i>	Macadamia Nut
<i>Mallotus philippensis</i>	Red Kamala
<i>Melia azedarach</i> var. <i>australasica</i>	White Cedar
<i>Melicope elleryana</i>	Pink Euodia
<i>Orites excelsa</i>	Prickly Ash
<i>Polyosma cunninghamii</i>	Featherwood
<i>Sterculia quadrifida</i>	Peanut Tree
<i>Syzygium floribundum</i>	Weeping Lilly Pilly
<i>Syzygium hemilamprum</i>	Broad-leaved Lilly Pilly
<i>Syzygium hodgkinsoniae</i>	Red Lilly Pilly
<i>Syzygium ingens</i>	Red Apple
<i>Syzygium luehmannii</i>	Riberry
<i>Syzygium moorei</i>	Durobby
<i>Syzygium oleosum</i>	Blue Lilly Pilly





Photos from the day, June 2nd - 507 Coolamon Scenic Drive, Coorabell NSW

Sophie works for RN full-time. Now that our peak tree planting season is coming to an end, she is training to become a rainforest regenerator (working with established forest to relieve it of invasive species)!



Romey has worked as a project manager for RN for several years. Coming from a background in Biological Sciences, he has the knowledge & skills to ensure our teams deliver exceptional outcomes for our partners and the environment.



# THANK YOU, GO-TO

It's lovely to have you by our side on our mission to regenerate critically endangered rainforest in Northern NSW.

Growing a charity is a constant hustle of proving the value of what you do, as there's nothing to sell. Thank you for valuing what we do and supporting us every year.

Please consider visiting us to see some of your older plantings, they're very well grown now. If we're walking quietly and slow we would probably see a myriad of birds, moths, butterflies, and more!

Warm regards, Maximo

If you have any further queries please contact me on

+61 415 134 941

or

[info@reforestnow.org.au](mailto:info@reforestnow.org.au)

Yours sincerely,

A handwritten signature in black ink, appearing to read 'Maximo Bottaro', with a stylized flourish at the end.

Maximo Bottaro - Co-Founder & CEO of ReForest Now







From your first tree planted on May 7th, 2021 to June 21st 2023, thank you for years of support.



**ReForest Now**

Growing Rainforest Together

GO-TO